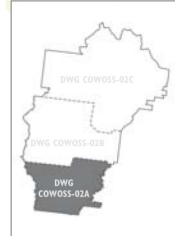
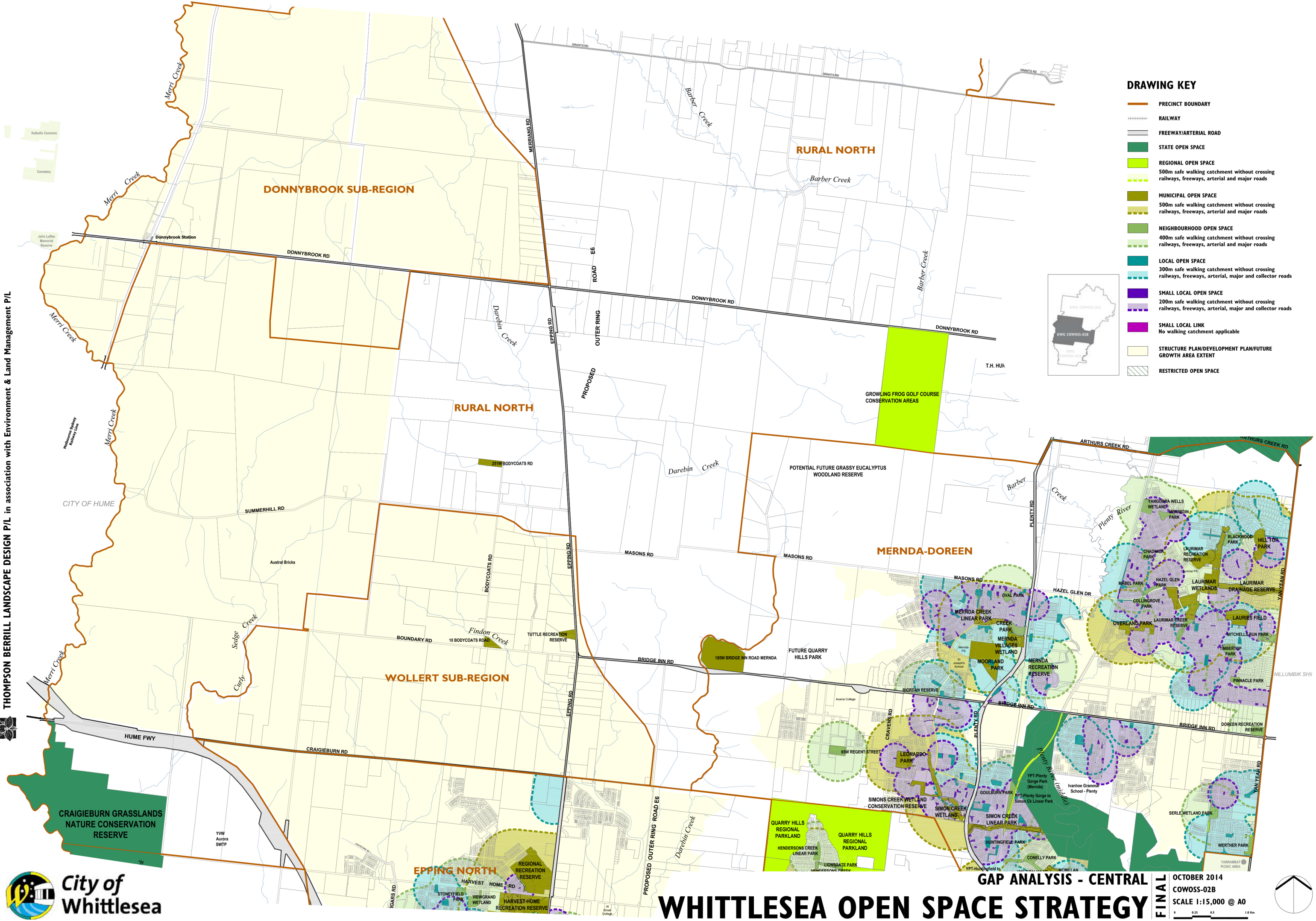


DRAWING KEY

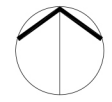
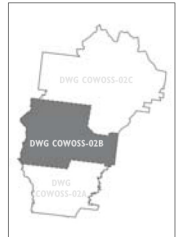
- PRECINCT BOUNDARY
- RAILWAY
- FREEWAY/ARTERIAL ROAD
- STATE OPEN SPACE
- REGIONAL OPEN SPACE
- 500m safe walking catchment without crossing railways, freeways, arterial and major roads
- MUNICIPAL OPEN SPACE
- 500m safe walking catchment without crossing railways, freeways, arterial and major roads
- NEIGHBOURHOOD OPEN SPACE
- 400m safe walking catchment without crossing railways, freeways, arterial and major roads
- LOCAL OPEN SPACE
- 300m safe walking catchment without crossing railways, freeways, arterial, major and collector roads
- SMALL LOCAL OPEN SPACE
- 200m safe walking catchment without crossing railways, freeways, arterial, major and collector roads
- SMALL LOCAL LINK
- No walking catchment applicable
- STRUCTURE PLAN/DEVELOPMENT PLAN/FUTURE GROWTH AREA EXTENT
- RESTRICTED OPEN SPACE

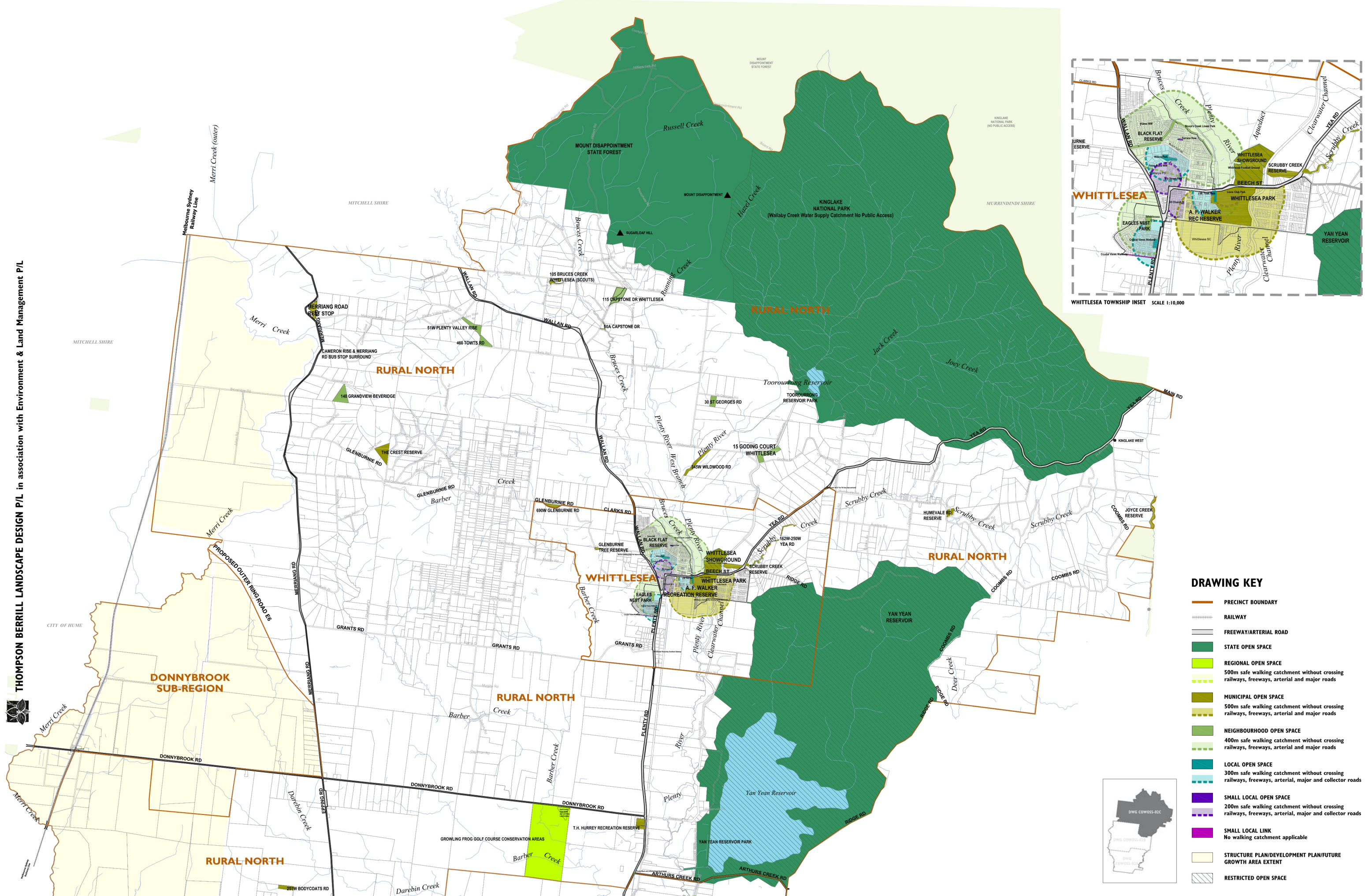




DRAWING KEY

- PRECINCT BOUNDARY
- RAILWAY
- FREEWAY/ARTERIAL ROAD
- STATE OPEN SPACE
- REGIONAL OPEN SPACE
- 500m safe walking catchment without crossing railways, freeways, arterial and major roads
- MUNICIPAL OPEN SPACE
- 500m safe walking catchment without crossing railways, freeways, arterial and major roads
- NEIGHBOURHOOD OPEN SPACE
- 400m safe walking catchment without crossing railways, freeways, arterial and major roads
- LOCAL OPEN SPACE
- 300m safe walking catchment without crossing railways, freeways, arterial, major and collector roads
- SMALL LOCAL OPEN SPACE
- 200m safe walking catchment without crossing railways, freeways, arterial, major and collector roads
- SMALL LOCAL LINK
- No walking catchment applicable
- STRUCTURE PLAN/DEVELOPMENT PLAN/FUTURE GROWTH AREA EXTENT
- RESTRICTED OPEN SPACE





DRAWING KEY

- PRECINCT BOUNDARY
- RAILWAY
- FREEWAY/ARTERIAL ROAD
- STATE OPEN SPACE
- REGIONAL OPEN SPACE
500m safe walking catchment without crossing railways, freeways, arterial and major roads
- MUNICIPAL OPEN SPACE
500m safe walking catchment without crossing railways, freeways, arterial and major roads
- NEIGHBOURHOOD OPEN SPACE
400m safe walking catchment without crossing railways, freeways, arterial and major roads
- LOCAL OPEN SPACE
300m safe walking catchment without crossing railways, freeways, arterial, major and collector roads
- SMALL LOCAL OPEN SPACE
200m safe walking catchment without crossing railways, freeways, arterial, major and collector roads
- SMALL LOCAL LINK
No walking catchment applicable
- STRUCTURE PLAN/DEVELOPMENT PLAN/FUTURE GROWTH AREA EXTENT
- RESTRICTED OPEN SPACE