



Keep me!
Put this quick guide
on your fridge or
somewhere handy.

Have you got a food and garden organics bin?

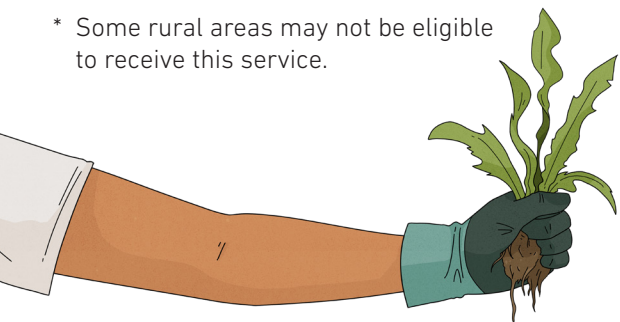
If you do not currently have a food and garden organics bin, you can sign up to receive one.

You will be able to put all of your food and garden waste, including grass clippings, cut up branches and prunings, into this bin that will be collected fortnightly.

The cost of this service is \$87.63 per year.

Find out more at www.whittlesea.vic.gov.au/foodwaste

* Some rural areas may not be eligible to receive this service.



Your new glass bin

To help improve the quality of our recycling and ensure as much recycling as possible can be turned into new products, the City of Whittlesea is introducing a new household glass recycling service.

All households will receive a new 120lt purple-lidded bin, to be used for glass.

This means glass bottles and jars will be collected separately from your other recycling.

This guide gives you an overview of what goes into each bin. More information is available on our website.

Your bin collections

- > Your purple-lidded glass recycling bin will be collected every four weeks.
- > Your yellow-lidded mixed recycling bin will continue to be collected fortnightly.
- > Your red-lidded general rubbish bin will continue to be collected weekly.
- > Your green-lidded food and garden organics bin will continue to be collected fortnightly (if you have opted-in for this service).

Visit www.whittlesea.vic.gov.au and check the My Neighbourhood feature for your bin days.

Make sure the lids on all your bins can close to prevent litter.



Your small acts make a big impact

It might seem like a small thing to sort your waste properly, but it makes a big impact when we all do it correctly.

Recycling well and reducing waste in the first place helps keep valuable resources out of landfill, so they can be used again and again. By sorting your recycling correctly, it can be turned into things like new glass jars, mulch and compost.

Learn more at sustainability.vic.gov.au



More information

If you have any questions visit our website, www.whittlesea.vic.gov.au/glassrecycling

Or contact us:

resource.recovery@whittlesea.vic.gov.au
9217 2170

Free telephone interpreter service

 131 450



The way we recycle is changing for the better

A small act makes a big impact



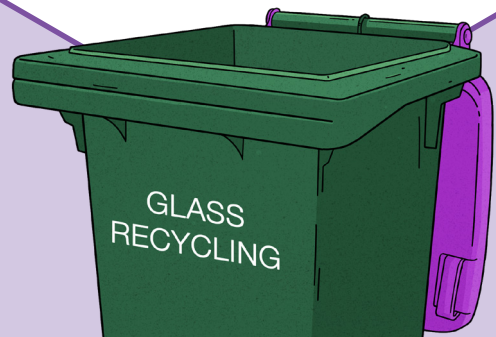
What goes in each bin

Glass recycling

Put lightly rinsed, empty glass bottles and jars into the bin loose, not in bags. Lids and bottle caps must be removed and placed in the rubbish bin. Labels do not need to be removed.

✓ Yes

- ✓ Glass bottles including beer, wine and olive oil bottles
- ✓ Glass bottles and jars for medicine or toiletries
- ✓ Glass jars including pasta sauce and condiment jars



⊘ No

Plastic bags or packaging, loose lids and caps from bottles or jars, corks, pumps, sprays, droppers, cardboard, crockery, such as plates, dishes or mugs, drinking glasses, glass cookware, vases, light bulbs.

Food and garden organics

Food scraps and garden clippings only. Remove stickers from fruit.

✓ Yes

- ✓ Out of date, inedible food
- ✓ Coffee grounds, loose leaf tea
- ✓ Dairy products including yoghurt
- ✓ Fruit and vegetable scraps
- ✓ Meat, seafood, bones, egg shells
- ✓ Leaves, plants, twigs, grass, weeds



⊘ No

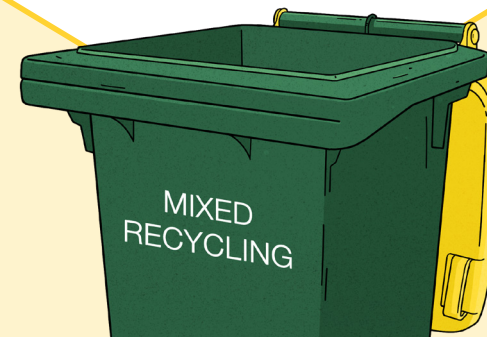
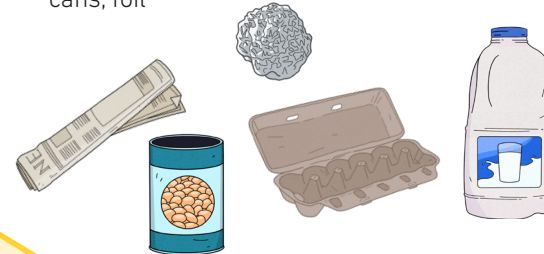
Plastic, including biodegradable or non-certified compostable plastics, coffee pods, tea bags, kitty litter, animal droppings, large branches, tree stumps, liquids, nappies, wet wipes.

Mixed recycling

Put your recycling in the bin loose, not in bags. Flatten boxes to save space. Glass no longer goes in this bin.

✓ Yes

- ✓ Accepted plastic bottles and containers
- ✓ Aluminium and steel tins, cans, foil
- ✓ Cardboard, cereal boxes, egg cartons
- ✓ Paper, newspapers, magazines, paper envelopes



⊘ No

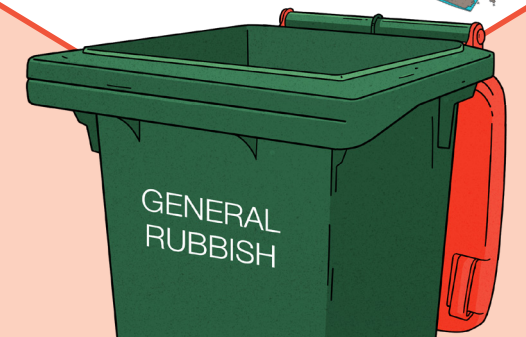
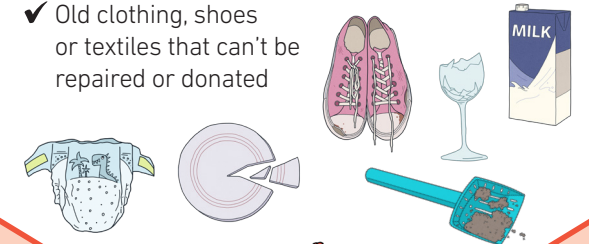
Plastic bags, other soft plastics, clothing, shoes, textiles, coated or waxed cardboard, electronic waste and batteries, glass, crockery, polystyrene (styrofoam).

General rubbish

Use this bin only for items that can't be placed into any of the other bins.

✓ Yes

- ✓ Broken glass kitchenware, crockery and mirrors
- ✓ Nappies, wet wipes, kitty litter, animal droppings
- ✓ Old clothing, shoes or textiles that can't be repaired or donated
- ✓ Loose jar lids and bottle caps, pumps, sprays, droppers
- ✓ Coated and waxed cardboard such as milk and juice cartons



⊘ No

Electronic waste and batteries, household chemicals, recyclable items, soil, building materials.

