

**MERENDA PRECINCT 2A (PART) DEVELOPMENT PLAN**  
**MAY 2024**

**Precinct 2A Development Plan**

The Development Plan was approved by the City of Whittlesea on 16 July 2024, in accordance with Clause 43-04 Schedule 5 of the Whittlesea Planning Scheme.

23/07/2024..... *Liam Wilkinson* .....

**Signature of the Responsible Authority**  
**Liam Wilkinson, A/Manager Strategic Futures**

---

# CONTENTS

1.	INTRODUCTION	3
2.	CONTEXT AND ANALYSIS	4
3.	DEVELOPMENT PLAN OVERLAY	6
4.	THE DEVELOPMENT PLAN	7
5.	STAGING	12
6.	IMPLEMENTATION	12
7.	CONCLUSION	13

---

# 1. INTRODUCTION

This Development Plan has been prepared in accordance with the requirements of Schedule 5 to the Development Plan Overlay (DPO 5) at Clause 43.04 of the Whittlesea Planning Scheme.

The Development Plan applies to land bound by Cookes Road to the north, residential land to the west, Bridge Inn Road to the south and Yan Yean Road to the east. In the context of the Mernda Strategy Plan the site sits within Precinct 2A. The Development Plan provides a broad urban framework to deliver an integrated environment which features a range of residential densities, a large number of tree reserves, passive open space and a fine grain movement network to provide excellent connectivity with surrounding precincts.

The Development Plan comprises the following:

- ▶ Context and Analysis
- ▶ Vision to guide the future development of the site
- ▶ Compliance with Schedule 5 to the Development Plan Overlay
- ▶ The Development Plan
  - ▶ Land uses and land budget
  - ▶ Residential development
  - ▶ Movement network
  - ▶ Open space network (including trees)
  - ▶ Indicative road cross sections

A number of Development Plan area assessments and background reports have been undertaken for the subject area by the proponent in accordance with the requirements of the DPO5. These assessments have been used to inform the preparation of the Development Plan and future permit applications but do not form part of this approved Development Plan.

The background reports include the following:

- ▶ Aborigicultural Assessment and Report
- ▶ Environmental Site Assessment
- ▶ Stormwater Management Strategy
- ▶ Traffic Engineering Assessment
- ▶ Engineering Infrastructure Report

---

## 2. CONTEXT AND ANALYSIS

### 2.1 REGIONAL CONTEXT

The site is located within the City of Whittlesea, 30 kilometres from the Melbourne CBD and 2 kilometres from Mernda Station. It forms part of the existing urban area of the North Growth Corridor Plan. The North Growth Corridor has good accessibility to the CBD and other major employment precincts. It features excellent road, rail, freight and public transport infrastructure. Trains that stop at Mernda Train Station connect this precinct to Melbourne CBD within an hour. The Principal Public Transport Network (PPTN) is proposed along Bridge Inn Road, to the south of the site, which is a major east west link to the Hume Highway.

### 2.2 LOCAL CONTEXT

The site sits within the south eastern corner of Precinct 2A of the Mernda Strategy Plan.

Existing, standard residential development is situated to the north, south and west of the site. Residential development ceases at Yan Yean Road, where a stud farm and other rural land is situated to the east. The Plenty River connects into the Plenty Gorge Parklands approximately 2km to the south of the site, with a variety of smaller open space typologies, such as ovals and playgrounds, are located around the site.

A number of educational uses are located within close proximity of the Development Plan area, with Hazel Glen College 200m north-west, Ivanhoe Grammar 700m to the west and Doreen Primary School 1km to the east of the site.

A small grouping of commercial land uses including convenience food outlets and petrol station is located on the south-western corner of the Yan Yean Road/Bridge Inn Road intersection. Laurimer Town Centre is located approximately 1.5-2km to the north which contains a supermarket and community centre.



## 2.3 SITE ANALYSIS

The site is rectangular in shape, and is located on the corner of Bridge Inn Road (to the south) and Yan Yean Road (to the east). It is boarded by Cookes Road to the north and development along Painted Hills Road to the west.

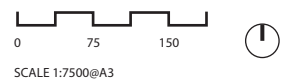
The site is located within the General Residential Zone (GRZ) and is affected by the Development Plan Overlay (DPO5); Development Contributions Plan Overlay (DCPO5); Incorporated Plan Overlay (IPO1), and; the Vegetation Protection Overlay (VPO1).

The site is currently developed with low density residential, with existing large trees throughout the site. An arborist assessment has highlighted a variety of species, including River Red Gums; a number of which are proposed to be located within tree reserves. Topographically the site is predominantly flat, with its high point on the northern boundary, with fall towards southern boundary.

A large transmission easement crosses the south-east corner of the site, with the Doreen Recreation Reserve intersecting the easement.



Figure 1. Site Analysis



### 3. DEVELOPMENT PLAN OVERLAY

#### 3.1 COMPLIANCE WITH SCHEDULE 5 TO THE DEVELOPMENT PLAN OVERLAY

The Development Plan has been prepared in accordance with the requirements of Schedule 5 to the Development Plan Overlay. The requirements of the Schedule have been addressed as follows:

- ▶ Accordance with the Mernda Strategy Plan. Key contextual details of the Mernda Strategy Plan are summarised at Figure 2 and have variously informed the preparation and content of this Development Plan.
- ▶ Protection of identified Conservation Areas. The Mernda Strategy Plan does not identify any conservation areas within the site. Nevertheless, the Development Plan has been informed by a desktop ecological assessment. Section 6.2 of the Development Plan requires further, on-site, ecological assessments to be completed as part of any future planning permit applications.
- ▶ Retention of River Red Gums. An aboriginal assessment has been completed for most (but not all) of the site. The results of the assessment are reflected in the figures throughout this document. The Development Plan layout has been designed to locate as many River Red Gums and other significant trees as possible in tree reserves.
- ▶ Net Gain Assessment of Native Vegetation. Future planning permit applications must comply with Clause 52.17 of the Planning Scheme.
- ▶ Landscape Views and Vistas. A small section of land in the northwest of the Development Plan site falls within a 'visually sensitive design area'. The area is highlighted in figure 2. It is expected that Council will impose design and siting controls in relation to any future development of land within this area.
- ▶ Interface Treatments. The Development Plan layout generally provides edge roads to open space areas. Where edge roads are not practical, including adjacent to the transmission line easement, the Development Plan requires residential areas to actively front the open spaces. Further details are set out in Section 4.5.

- ▶ Cultural Heritage. Section 6.3 of the Development Plan requires an Archaeological Survey and Heritage Assessment to be completed and considered as part of any future permit application process. Section 61 of the Aboriginal Heritage Act 2006 sets out matters to be considered before finalising subdivision layout plans.
- ▶ Stormwater Management. A Stormwater Management Plan has been prepared. The findings of the Plan have informed the preparation and content of this Development Plan.
- ▶ Residential Diversity. The Development Plan provides opportunity for both conventional and medium density residential development suitable for a diverse range of dwelling types.
- ▶ Road Network. The proposed road network is illustrated throughout the Development Plan. The layout has been informed by specialist input and is carefully designed so that it is logical and easy to navigate whilst also accommodating the retention of a large number of existing trees. Typical Road cross sections are included in Appendix 3.
- ▶ Landscape and Street Trees. The tree reserves throughout the Development Plan area will be an important and attractive design feature of the developed land. It is anticipated that more detailed Landscape Plans will be developed as part of future planning permit application processes.
- ▶ Environmental (Contamination) Assessment. A Phase 1 Environmental Site Assessment has been completed. Based on the findings of the assessment, three properties have been identified as requiring further follow-up assessment prior to applying for a planning permit. Further details are set out in section 4.3 of this Development Plan.
- ▶ Staging. Preferred staging arrangements are described and illustrated in Section 5 of this report.

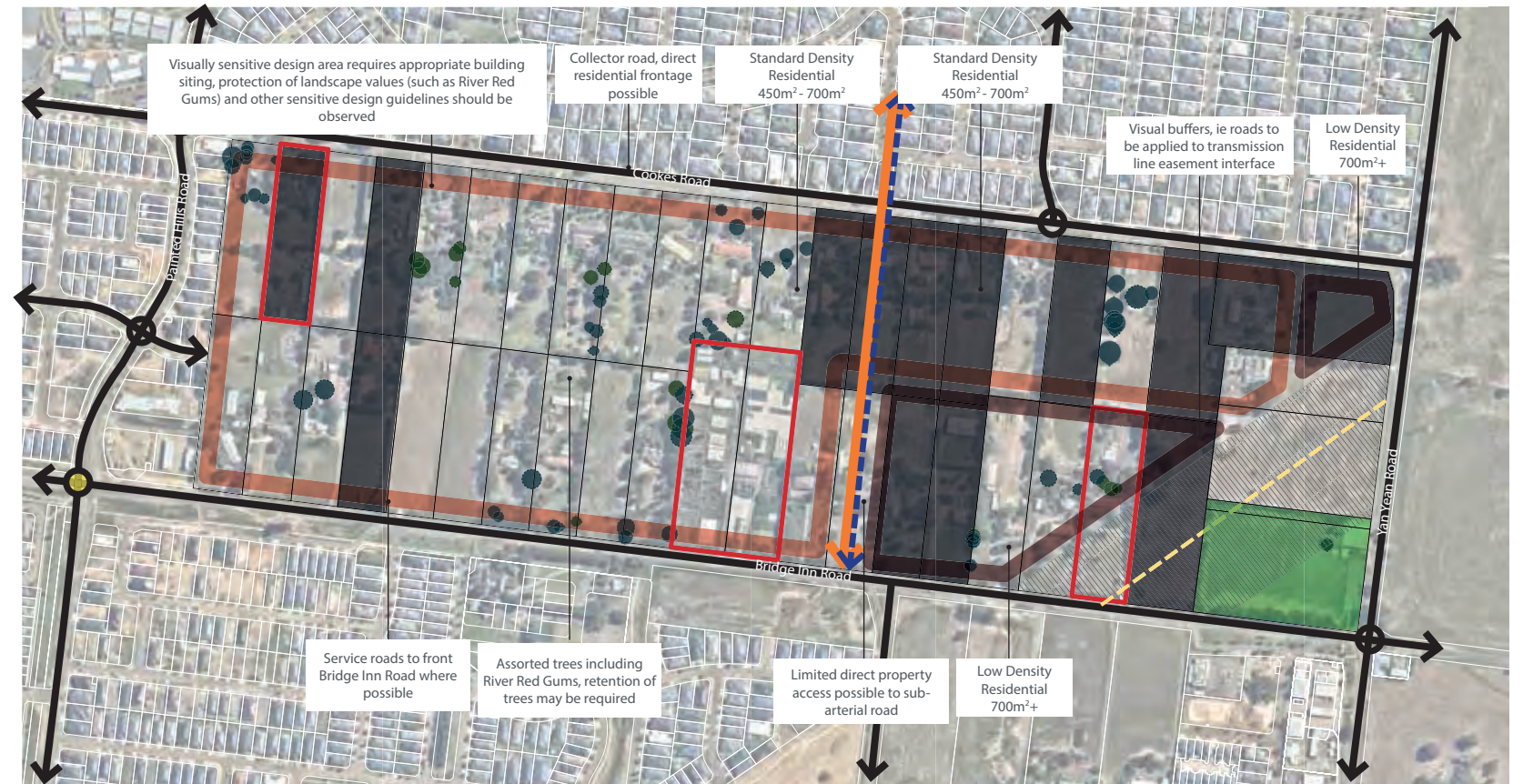
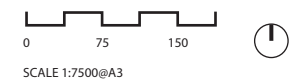


Figure 2. Development Plan Overlay Response

#### LEGEND

- BUS-CAPABLE COLLECTOR ROAD
- PRIMARY BUS ROUTE
- OFF ROAD BICYCLE AND PEDESTRIAN TRAIL
- EASEMENT
- ACTIVE OPEN SPACE
- VISUALLY SENSITIVE DESIGN AREA
- STANDARD DENSITY LOTS (450m² - 700m²)
- LOW DENSITY LOTS (700m²+)
- TREES LOCATED IN TREE RESERVES
- River Red Gums; planted or remnant
- Other species indigenous to the local area; planted or remnant i.e. Manna Gum, Yellow Box, Yellow Gum, Candlebark, Red Box & Swamp Gum

- ENVIRONMENTAL ASSESSMENT REQUIRED
- TREES NOT ASSESSED  
Trees and other vegetation on these parcels have not been assessed as part of the preparation of this Development Plan. Detailed arboricultural and ecological assessments are required to be completed at planning permit stage. Subject to the findings of those future assessments, it is anticipated that further tree reserves will be required. This will influence the final layout, including the amount of developable land, of these particular sites
- KEY ROADS
- SIGNALISED INTERSECTION
- ROUNDABOUT



## 4. THE DEVELOPMENT PLAN

### 4.1 OVERVIEW

The Development Plan aims to provide for the protection of significant native vegetation within a high quality, interconnected urban development. It will provide a basis for the consideration of future subdivision applications.

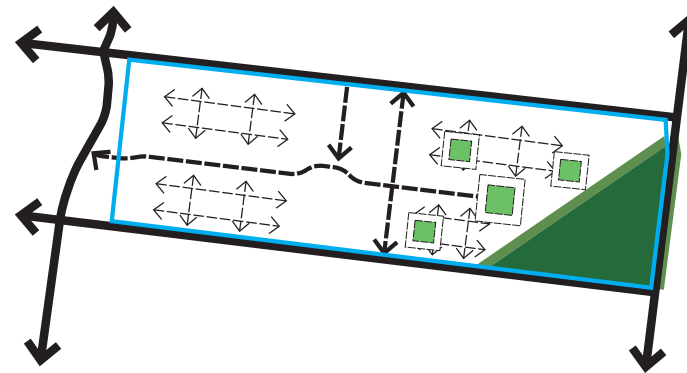
The Development Plan:

- ▶ Provides a road layout that provides logical connections within this site and to the surrounding road network.
- ▶ Provides a broad range of residential opportunities - suitable for supporting various housing needs and lifestyle preferences
- ▶ Has been prepared having careful regard to the natural features and character of the land including the presence of a large number of River Red Gums and other significant trees.
- ▶ Incorporates open space areas throughout the site located to protect and preserve significant trees to provide attractive and practical amenity within the site/
- ▶ Provides logical interfaces with all surrounding land
- ▶ Has careful regard to storm water planning and the provision of key engineering services

### 4.2 VISION

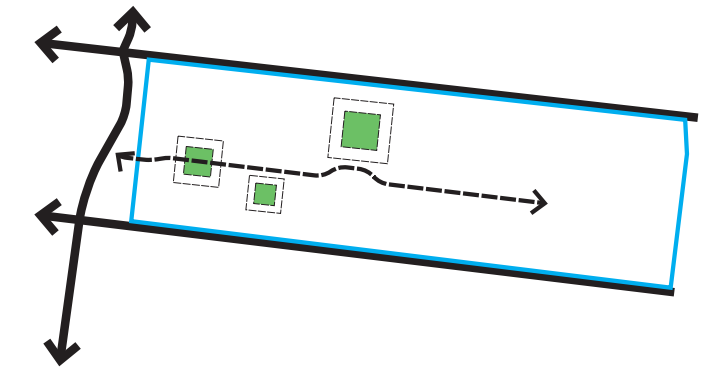
*“The Precinct will become an interconnected community that is based on a site responsive design approach that encourages innovative design solutions, housing diversity and draws upon the existing conditions for local amenity.”*

#### INTERCONNECTED NEIGHBOURHOOD



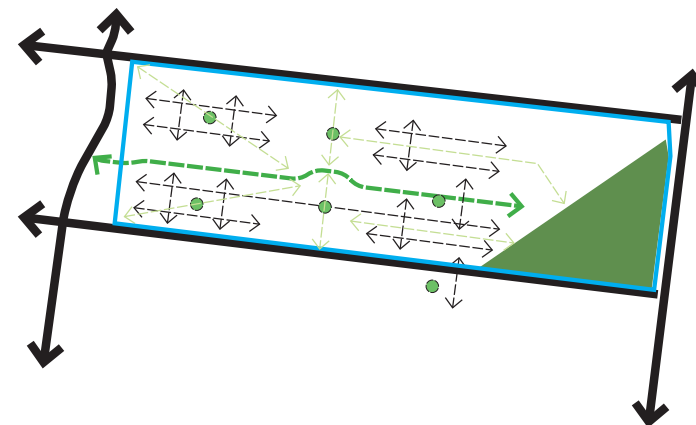
Create an Interconnected neighbourhood that has a distinctive character based on the local environment.

#### DIVERSITY OF HOUSING TYPES



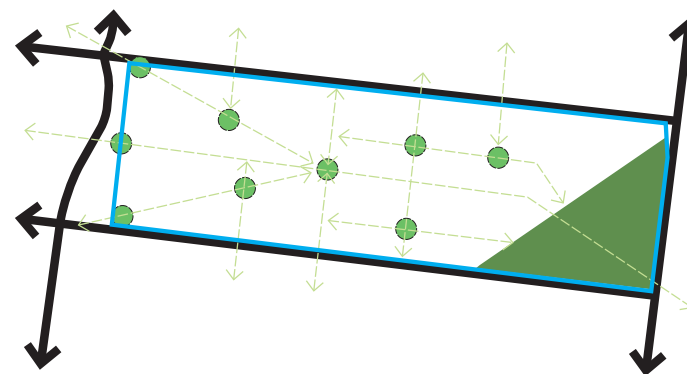
To create a diversity of housing typologies both standard and innovative medium density built form outcomes around open spaces.

#### DIVERSITY OF STREETSCAPES



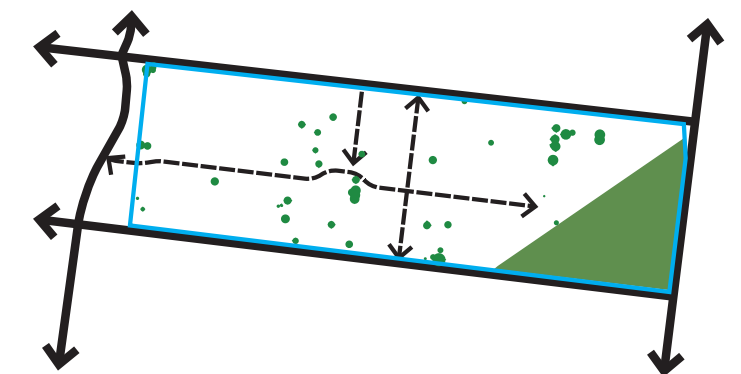
To create a diversity of streetscape through retention of existing trees, small local parks and pathways at termination of roads to allow pedestrian and cycle connections and tree retention.

#### INNOVATIVE OPEN SPACE SYSTEMS



To create a diverse open space system connecting the wider Mernda area, local convenience centres, schools and active recreation through the site via open spaces and connection utilising existing site features.

#### PROTECTION OF HIGHLY VALUED TREES



To ensure highly valued trees are preserved through the use of tree-reservations, pocket parks and widened nature strips.

### 4.3 POTENTIALLY CONTAMINATED LAND

This Development Plan has been informed by a Phase 1 Environmental Site Assessment. Based on the findings of the Assessment, the Environment Protection Agency (EPA) has identified three properties (four land parcels) which require further assessment in order to conclusively understand the potential for contamination.

The three properties requiring further assessment are identified at Figure 3, and details of the further assessment are set out in the table below.

For the three properties identified, the required further work must be completed and any recommendations for addressing any contamination must be complied with prior to applying for a planning permit for subdivision, development or use of the land.

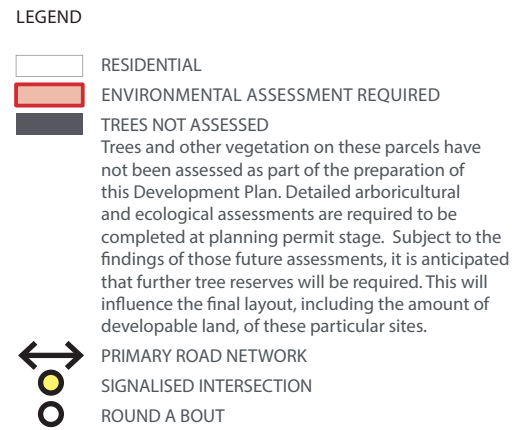
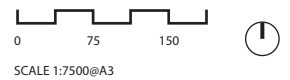


Figure 3. Potentially Contaminated Land



Property	Area of Potential Environmental Interest	EPA Comment
180 Cookes Road	Storage shed and area containing cars and other machinery.	A Preliminary Risk Assessment should clarify whether any of these areas involved storage of chemicals and therefore meets the definition of 'potentially contaminated land'. Planning Practice Note 30 lists 'Above ground storage of chemicals or fuels (where such storage is ancillary to the primary site activities but is not minor)' with a medium potential for contamination. If this activity is triggered, Planning Practice Note 30 would recommend a Preliminary Risk Screen Assessment.
865-871 Bridge Inn Road	Plant Nursery.	Planning Practice Note 30 lists 'Commercial use of pesticides (including herbicides, fungicides etc)' with a medium potential for contamination and would recommend a Preliminary Risk Screen Assessment.
911 Bridge Inn Road	A stockpile of soil with an approximate volume of 30 m <sup>3</sup> was observed onsite in the front yard of the site.	Planning Practice Note 30 lists 'stockpiles of imported fill' with a medium potential for contamination and would recommend a Preliminary Risk Screen Assessment.



#### 4.4 LAND USE AND LAND BUDGET

The Development Plan is 49.9 Ha and made up of 45 individual titles. It seeks a minimum density target of 16.5 dwellings per net developable hectare, with the minimum standard density at 16 dwellings per net developable hectare and the minimum medium density at 20 dwellings per net developable hectare.

Development at this density will result in providing an additional supply of approximately 650 dwellings. At an occupation rate of 3.1 persons per dwelling this will provide housing for just under 2,000 persons.

Existing land uses include a 157m wide transmission easement and 2.25 Ha of Active Open Space which partially sits within the easement. These occupy the south-eastern corner of the site and are non developable. The Development Plan requires 2m of land from the frontage of properties on Cookes Road for the urbanisation of Cookes Road. The balance of the site is set aside for residential land development and the protection of high value trees within public open space.

##### LAND BUDGET

Site Area	49.904 Ha		
	Area (Ha)	%Site	% NDA
<b>Open Space</b>			
Tree Reserves	4.929	9.88%	12.89%
Active Open Space	0.930	1.86%	2.43%
<b>Sub Total</b>	<b>5.859</b>	<b>11.74%</b>	<b>15.32%</b>
<b>Other</b>			
Powerline Easement	5.562	11.15%	14.55%
Overland Flow Path (Service)	0.146	0.29%	0.38%
2m Road Urbanisation (Cookes Road)	0.255	0.51%	0.67%
<b>Sub Total</b>	<b>5.963</b>	<b>11.95%</b>	<b>15.60%</b>
<b>Total</b>	<b>11.822</b>	<b>23.69%</b>	<b>30.92%</b>
<b>NDA</b>	<b>38.082</b>	<b>76.31%</b>	<b>100.00%</b>

Note: Where the powerline easement overlaps other land uses, the easement takes priority in reference to the land budget.

The land areas in this Table are indicative only and are expected to change following the completion of further arboricultural assessments and other investigations.

##### LEGEND

- RESIDENTIAL
- ENVIRONMENTAL ASSESSMENT REQUIRED
- POTENTIAL PLACE OF WORSHIP
- ENCUMBERED OPEN SPACE - EASEMENT
- ACTIVE OPEN SPACE
- TREE RESERVES
- OVERLAND FLOW PATH (SERVICE)
- NO ROAD ACCESS
- TREES LOCATED WITHIN TREE RESERVES
- River Red Gums; planted or remnant
- Other species indigenous to the local area; planted or remnant i.e. Manna Gum, Yellow Box, Yellow Gum, Candlebark, Red Box & Swamp Gum
- TREES REQUIRING PERMIT FOR REMOVAL
- To be assessed at planning permit stage
- TREES NOT ASSESSED
- Trees and other vegetation on these parcels have not been assessed as part of the preparation of this Development Plan. Detailed arboricultural and ecological assessments are required to be completed at planning permit stage. Subject to the findings of those future assessments, it is anticipated that further tree reserves will be required. This will influence the final layout, including the amount of developable land, of these particular sites.
- PRIMARY ROAD NETWORK
- ROAD WIDENING (2m URBANISATION)
- SIGNALISED INTERSECTION
- ROUND A BOUT

Note: Properties outlined in red require assessment for potential contamination. This assessment must be completed and any recommendations for addressing any contamination must be complied with prior to an application for planning permit. Refer to section 4.3 for further details.

Note: Encumbered open space future uses subject to planning permit application and SP AusNet approval.

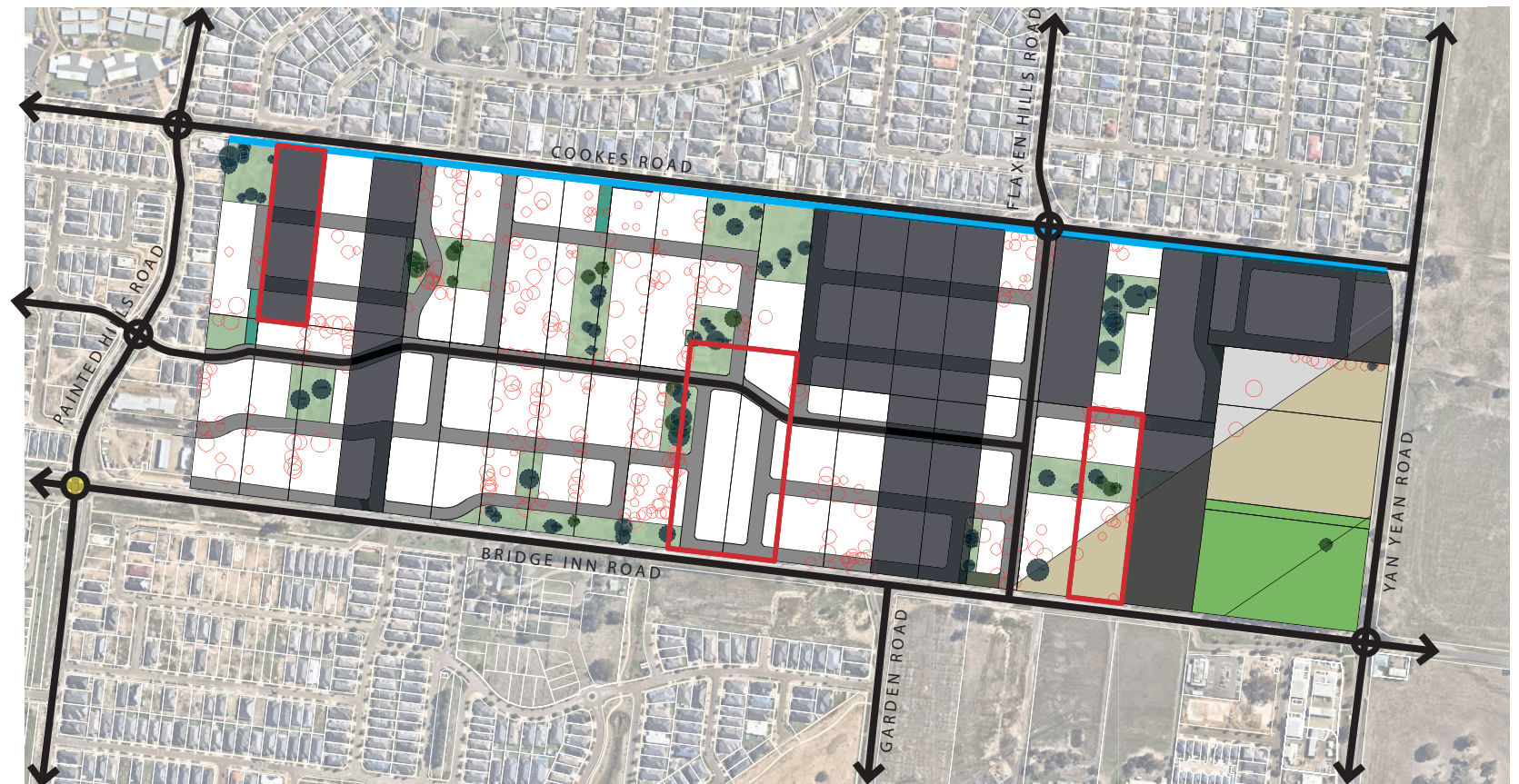
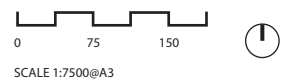


Figure 4. Land Use Plan



## 4.5 RESIDENTIAL DEVELOPMENT

Residential areas will be developed with a mixture of medium density and conventional residential lots. The varying densities provides the opportunity for a variety of housing typologies to support the increasingly diverse current and future needs of the local community.

The majority of lots within the Development Plan area will be of standard density, which reflects the existing surrounding residential area and provides appropriate transitioning from the adjoining rural land to the east.

With the retention of key trees throughout the site, there is opportunity to provide increased densities around open space, with dwellings fronting pockets of open space to leverage amenity and views. The increase in density provides better public safety outcomes with increased passive surveillance over public spaces, as well as increased equity with more people being able to enjoy these open spaces. Built form should front (priority) or side on to open space where applicable. Fencing and paper road guidelines may be used to control a positive outcome between the public and private realm as part of the planning permit process as required by the responsible authority.

To provide a variety of housing types and choices, residential development will contain a variety of lot depths and widths, with housing typologies such as conventional front loaded dwellings, rear loaded terraces and single and double storey detached homes. Dwellings are able to front onto Cookes Road and back onto lots along the western boundary.

The Development Plan layout provides opportunity for an appropriate transition between open space areas/ transmission line easement and residential areas to be assessed and approved at a planning permit stage.

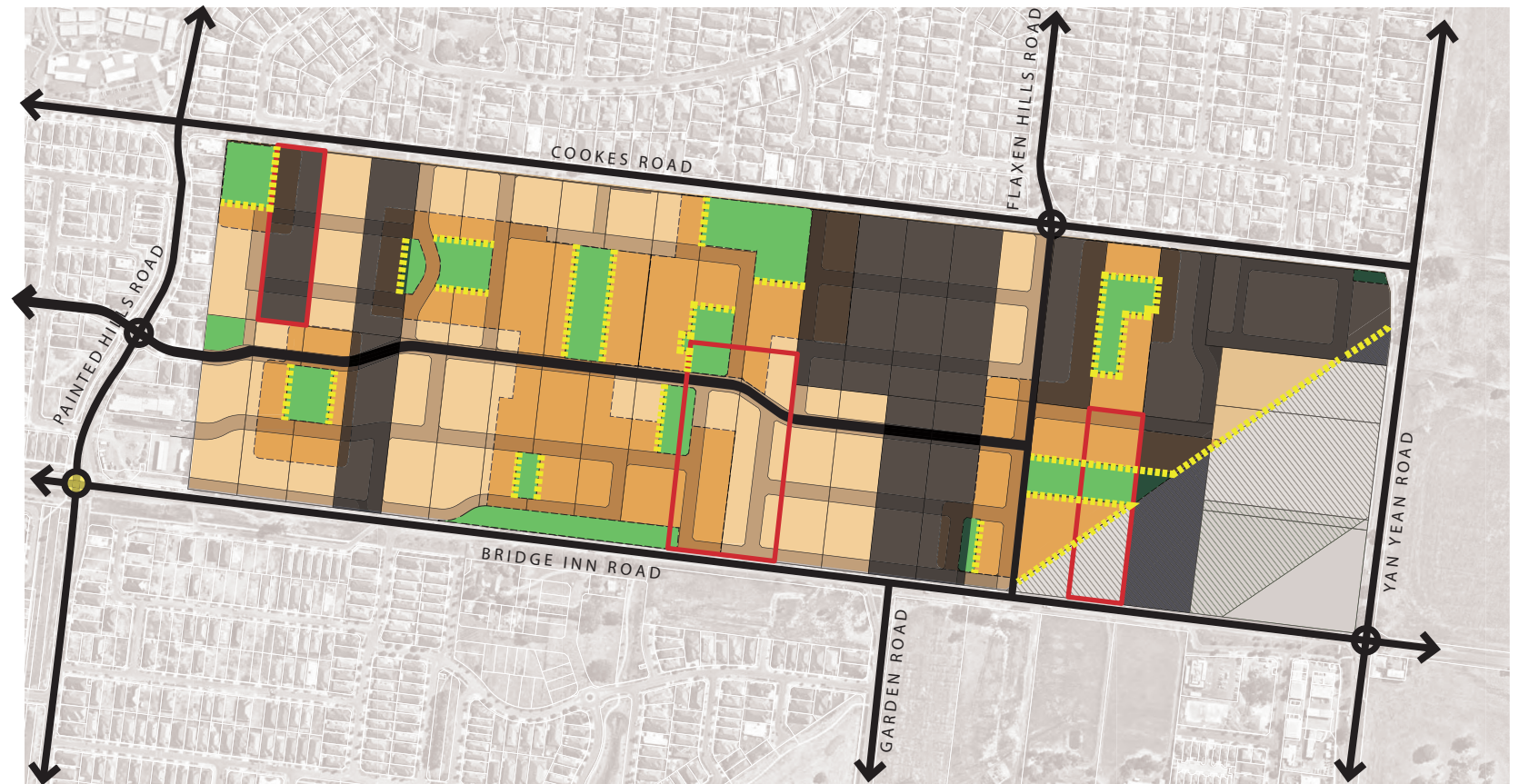
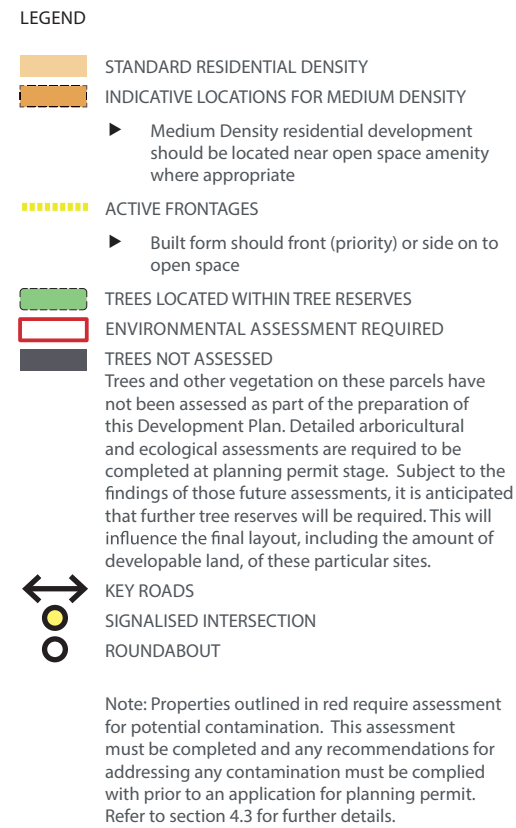
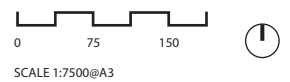


Figure 5. Residential Density



## 4.6 MOVEMENT NETWORK

The movement network provides for a simple and legible street layout that is easy to navigate for both vehicles and pedestrians. It is a hierarchy of lower order roads that feed into higher order roads, to facilitate movement into and out of the area. They seek to integrate and connect the surrounding urban development without overburdening existing local roads. The road network responds to the natural environment and retention of trees by integrating them into public open spaces along the streets.

The north-south bus capable connector road has been designed to accommodate future bus movements. It is located to connect in with the existing Flaxen Hills Road to the north of site and Bridge Inn Road to the south. It also joins an east-west Key Local Access Street which transverse the site, connecting into the existing Belmont Rise. This is the Development Plan's primary movement network, where all lower order roads feed into.

The road network responds to each site edge and the requirements for each interface. The southern boundary is bordered by service roads (to be limited to the extension of existing service road) and by local access streets to enable development to front Bridge-Inn Road, but to prevent direct lot access. Dwellings are able to front onto Cookes Road (to be widened and urbanised) and back onto lots along the western boundary.

This is 2m widening to accommodate 2.5m nature strip and 2.5m Shared User Path on the property side of the undergrounded services (begins at 0.5m from current title boundary). The shared path cannot be delivered over the undergrounded services or around the existing electricity poles.

Where residential development fronts open space, a rear lane or mews should be utilised in the design. This is to ensure there are active frontages at the open space interfaces. The road layout avoids cross intersections. T - intersections are provided at 90° wherever possible.

Where tree reserves front Cookes Road, shared path is to deviate through tree reserve if required.

Refer Appendix 3. for indicative cross sections.

### LEGEND

- COOKES ROAD UPGRADE  
2m of land required for urbanisation, to the satisfaction of Council
- 20m BUS CAPABLE COLLECTOR ROAD
- 18m ACCESS LEVEL 2 STREET
- 16m ACCESS LEVEL 1 STREET
- 14.5m ACCESS LEVEL 1 STREET
- OPPORTUNITY FOR REAR LANE
  - ▶ Locations identified where tree protection has taken priority
  - ▶ Can be use in other locations to provide passive surveillance to open space locations
- ENVIRONMENTAL ASSESSMENT REQUIRED
- TREES NOT ASSESSED  
Trees and other vegetation on these parcels have not been assessed as part of the preparation of this Development Plan. Detailed arboricultural and ecological assessments are required to be completed at planning permit stage. Subject to the findings of those future assessments, it is anticipated that further tree reserves will be required. This will influence the final layout, including the amount of developable land, of these particular sites.
- PRIMARY ROAD NETWORK external to site
- SIGNALISED INTERSECTION
- ROUNDABOUT

Note: Any laneways or paper roads must meet the requirements of Council Guidelines for Urban Development.

Properties outlined in red require assessment for potential contamination. This assessment must be completed and any recommendations for addressing any contamination must be complied with prior to an application for planning permit. Refer to section 4.3 for further details.

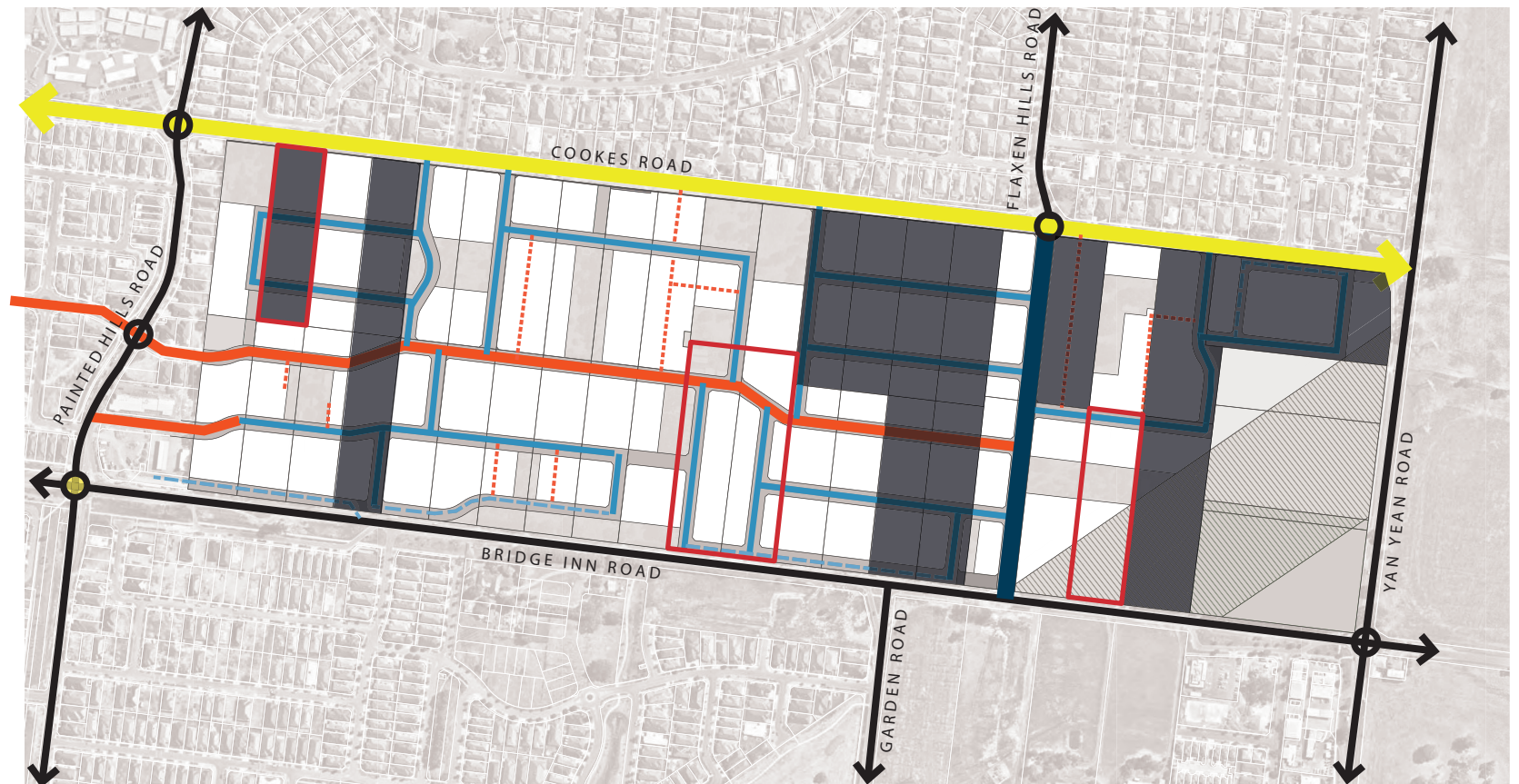
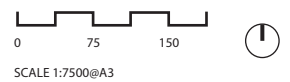


Figure 6. Road Network



#### 4.7 OPEN SPACE PLAN - TREE RESERVES

The Development Plan seeks to provide a visually appealing network of public open spaces. The open space strategy is centred on the retention of existing high value trees within the public realm while including the existing encumbered open space in the south-east corner of the Development Plan. The high-value trees will be retained within public open space as tree reserves or 'pocket parks' and include off-road pedestrian linkages and added amenity for the surrounding residents. The distribution of the pocket parks allow for all residents to be within a 400m walkable catchment to an area of public open space for passive recreation purposes.

Doreen Recreation Reserve sits in the south-east corner of the site and is intersected by the transmission line easement.

A landscape masterplan has been prepared for the reserve to guide future development of the site. It includes the provision of accessible public toilets, new tennis courts, picnic facilities, shelters, a new playground, improved pathways and open space for sporting and community events. An off-road trail is located within the transmission line easement, as per the Mernda Strategy Plan, connecting the Development Plan to surrounding areas, including the Plenty Gorge Parklands.

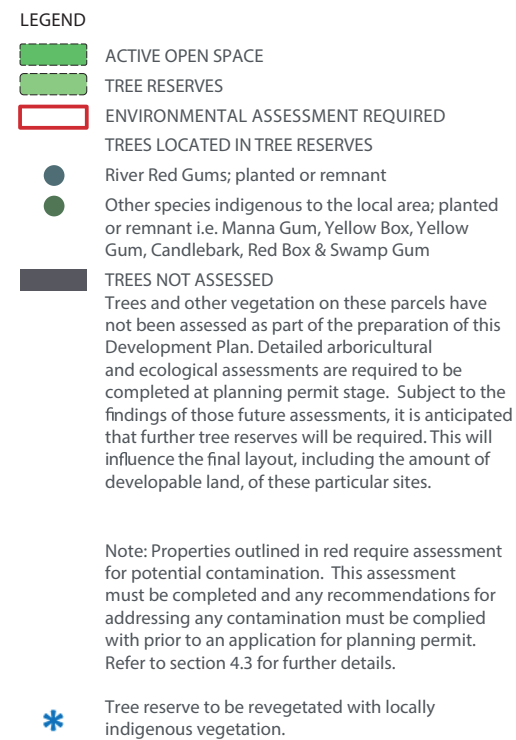
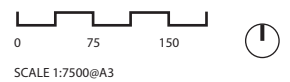


Figure 7. Open Space Plan - Tree Reserves



---

## 5. STAGING

Early delivery of the north-south sub-arterial road is desirable as this will provide permanent vehicle access to and from Bridge Inn Road thereby avoiding the need for any temporary, private, access arrangements. It follows on this basis that development should generally occur from east to west across the site.

It is noted, however, that land ownership within the Development Plan area is highly fragmented. Accordingly, it is expected that permit applications for subdivision, development and use within the Development Plan area will be made for individual sites as required and based on compliance with the development plan.

Interim or temporary access arrangements (ahead of delivery of the road network required to service a development lot) will not be supported.

---

## 6. IMPLEMENTATION

### 6.1 GENERAL

The details that are set out in this Development Plan are intended to guide and inform the preparation and assessment of future planning permit applications for the land.

The layout plans depicted in this Development Plan are indicative only and are subject to refinement as part of the future planning process and the findings and recommendations of further investigations, including the information noted in section 6.2 below.

### 6.2 POTENTIALLY CONTAMINATED LAND

For properties identified on the Potentially Contaminated Land plan (Figure 3) at Section 4.3, further contamination assessment is required as per the EPA advice for each respective property. Should the potential for contamination be confirmed via a Preliminary Site Investigation, an environmental auditor appointed under the Environment Protection Act 2017 must conduct a Preliminary Risk Screen Assessment in accordance with Part 8.3 of that Act, that is scoped according to the proposed use/development. The auditor must issue a Preliminary Risk Screen Assessment statement for the land in accordance with s. 205 of the Environment Protection Act 2017. This must be done before applying for a Planning Permit and details must be provided to Council.

For sites where the process above results in recommendations that an Environmental Audit is required, or alternative management measures are required, written confirmation of compliance must be provided by an environmental auditor or suitably qualified environmental consultant. Where there are recommendations for ongoing maintenance and monitoring, a S173 Agreement under the Planning and Environment Act 1987 may be required to be entered into prior to applying for a planning permit.

### 6.3 INFORMATION REQUIRED TO SUPPORT FUTURE PLANNING PERMIT APPLICATIONS

In addition to information otherwise required by the Whittlesea Planning Scheme, any planning permit application to subdivide or develop the site should include the following supporting information, prepared by a suitably qualified professional.

- ▶ On-site Ecological Assessment. While this Development Plan has been informed by a desktop ecological assessment, further on-site ecological investigations should be completed as part of the preparation of any future permit applications. Due to the potential removal of native vegetation, a Native Vegetation Removal Report responding to clause 52.17 will be required.
- ▶ Archaeological Survey and Heritage Assessment. The assessment should include recommendations for the protection, restoration and interpretation of significant individual sites and, where appropriate, design measures to sensitively integrate sites into the proposed open space network.
- ▶ Additional Arboricultural Assessment (selected properties only). This particular requirement only applies in relation to properties where existing trees weren't able to be fully assessed as part of this Development Plan (ie. the properties that are identified as 'Trees not assessed' on Figure 1.

The above assessments can be completed as a single, precinct-wide, exercise or on a property-by-property basis.

The findings of the above assessments should inform the layout and details of the permit application and may result in additional land being required for open space purposes and/or other updates or variations to the Development Plan.

In relation to trees that are identified in the arboricultural assessment, priority should be afforded to the retention of:

- ▶ River red gums; planted or remnant
- ▶ Other species Indigenous to the local area
- ▶ Diameter at breast height >60cm
- ▶ Arboricultural rating of Mod B or higher
- ▶ Useful life expectancy >20 years

---

## 7. CONCLUSION

The Development Plan provides ongoing guidance and support for proposed development within the site and provides a basis for the consideration of future subdivision applications. It has been developed from a detailed site analysis of the natural, physical and strategic context of the site, as well as the guiding principles and themes from the Mernda Strategy Plan 2004 and associated Precinct 2A Plan, Whittlesea Planning Scheme Policy, requirements of the General Residential Zone and Development Plan Overlay for the site. These elements were then used to inform a localised, site responsive Development Plan which takes into account the sites unique features.

Care has been taken to integrate the Development Plan into the neighbouring existing residential development. Appropriate road and pedestrian connections, open space networks and residential densities have been chosen to reflect the broader context, while the retention of a significant amount of high quality trees throughout the site provides a sense of place and character unique to this location. The development will provide a range of housing choices for future residents, a network of accessible open space and a legible street layout in and out of the area.

# APPENDIX 1 - PROPERTY REFERENCE MAP FOR LAND BUDGET

**TREES NOT ASSESSED**  
Trees and other vegetation on these parcels have not been assessed as part of the preparation of this Development Plan. Detailed arboricultural and ecological assessments are required to be completed at planning permit stage. Subject to the findings of those future assessments, it is anticipated that further tree reserves will be required. This will influence the final layout, including the amount of developable land, of these particular sites.



Figure 8. Property Reference Map

0 75 150  
SCALE 1:7500@A3

## APPENDIX 2 - PROPERTY SPECIFIC LAND BUDGET

Property specific land budget (properties 1-22).

Property	1	2	3	4	5	6	7	8	9	10	11	12	13	14	15	16	17	18	19	20	21	22		
Site Area (Ha)	1.038	1.013	1.009	1.014	0.999	1.019	0.996	1.010	0.998	1.016	0.989	0.894	1.011	1.004	1.006	1.025	1.035	1.066	1.088	1.259	1.971	1.153	Total Site Area (Ha)	49.910
Open Space																							Open Space	
Tree Reserves	0.356	0.000	0.000	0.045	0.197	0.199	0.000	0.351	0.197	0.000	0.506	0.455	0.000	0.000	0.000	0.000	0.000	0.000	0.417	0.000	0.040	0.000	Passive Open Space	4.786
Active Open Space	0.000	0.000	0.000	0.000	0.000	0.000	0.000	0.000	0.000	0.005	0.000	0.000	0.000	0.000	0.000	0.000	0.000	0.000	0.000	0.000	0.000	0.000	Active Open Space	0.930
Sub Total	0.356	0.000	0.000	0.045	0.197	0.199	0.000	0.351	0.197	0.005	0.506	0.455	0.000	0.000	0.000	0.000	0.000	0.000	0.417	0.000	0.040	0.000	Sub Total	5.716
Other																							Other	
Powerline Easement	0.000	0.000	0.000	0.000	0.000	0.000	0.000	0.000	0.000	0.000	0.000	0.000	0.000	0.000	0.000	0.000	0.000	0.000	0.000	0.000	0.111	0.558	Powerline Easement	5.563
Overland Flow Path (Service)	0.038	0.000	0.000	0.000	0.000	0.000	0.000	0.070	0.004	0.000	0.000	0.000	0.000	0.000	0.000	0.000	0.000	0.000	0.000	0.000	0.000	0.000	Overland Flow Path	0.146
2m Road Urbanisation (Cookes Road)	0.011	0.011	0.011	0.011	0.010	0.011	0.010	0.011	0.010	0.011	0.013	0.011	0.011	0.010	0.010	0.011	0.011	0.012	0.012	0.012	0.037	0.000	Road Urbanisation	0.257
Sub Total	0.049	0.011	0.011	0.011	0.010	0.011	0.010	0.080	0.015	0.011	0.013	0.011	0.011	0.010	0.010	0.011	0.011	0.012	0.012	0.012	0.148	0.558	Sub Total	5.966
Total	0.405	0.011	0.011	0.056	0.207	0.210	0.010	0.432	0.212	0.016	0.519	0.466	0.011	0.010	0.010	0.011	0.011	0.012	0.429	0.012	0.188	0.558	Total	11.822
NDA	0.633	1.002	0.998	0.958	0.792	0.809	0.986	0.578	0.786	1.000	0.471	0.428	1.000	0.993	0.995	1.015	1.023	1.054	0.659	1.247	1.783	0.595	NDA	38.082

Note: Where the powerline easement overlaps other land uses, the easement takes priority in reference to the land budget

The land areas in this Table are indicative only and do not account for the possible provision of additional tree reserves or other site layout changes that may be required following the completion of detailed arboricultural and ecological assessments.

Property specific land budget for properties 23-45 continues on next page.



## APPENDIX 2 - PROPERTY SPECIFIC LAND BUDGET

Property specific land budget (properties 23-45)

Property	23	24	25	26	27	28	29	30	31	32	33	34	35	36	37	38	39	40	41	42	43	44	45			
Site Area (Ha)	1.902	0.202	2.049	1.591	1.224	1.212	1.159	1.045	1.021	1.014	1.022	1.311	1.358	1.040	0.996	1.017	1.004	1.029	1.009	1.021	1.001	1.032	1.038	Total Site Area (Ha)	49.910	
Open Space																									Open Space	
Tree Reserves	0.000	0.000	0.000	0.082	0.235	0.236	0.054	0.048	0.000	0.000	0.000	0.000	0.265	0.295	0.123	0.168	0.194	0.032	0.000	0.000	0.216	0.070	0.15	Passive Open Space	4.786	
Active Open Space	0.001	0.011	0.918	0.000	0.000	0.000	0.000	0.000	0.000	0.000	0.000	0.000	0.000	0.000	0.000	0.000	0.000	0.000	0.000	0.000	0.000	0.000	0.000	Active Open Space	0.930	
Sub Total	0.001	0.011	0.918	0.000	0.000	0.236	0.054	0.048	0.000	0.000	0.000	0.000	0.265	0.295	0.123	0.168	0.194	0.032	0.000	0.000	0.216	0.070	0.015	Sub Total	5.716	
Other																									Other	
Powerline Easement	1.763	0.191	1.131	1.107	0.501	0.197	0.004	0.000	0.000	0.000	0.000	0.000	0.000	0.000	0.000	0.000	0.000	0.000	0.000	0.000	0.000	0.000	0.000	Powerline Easement	5.563	
Overland Flow Path (Service)	0.000	0.000	0.000	0.000	0.000	0.000	0.000	0.000	0.000	0.000	0.000	0.000	0.000	0.000	0.000	0.000	0.000	0.000	0.000	0.000	0.000	0.000	0.034	Overland Flow Path	0.146	
2m Road Urbanisation (Cokes Road)	0.000	0.000	0.000	0.000	0.000	0.000	0.000	0.000	0.000	0.000	0.000	0.000	0.000	0.000	0.000	0.000	0.000	0.000	0.000	0.000	0.000	0.000	0.000	Road Urbanisation	0.257	
Sub Total	1.763	0.191	1.131	1.107	0.501	0.197	0.004	0.000	0.000	0.000	0.000	0.000	0.000	0.000	0.000	0.000	0.000	0.000	0.000	0.000	0.000	0.000	0.034	Sub Total	5.966	
Total	1.763	0.202	2.049	1.107	0.501	0.433	0.058	0.048	0.000	0.000	0.000	0.000	0.265	0.295	0.123	0.168	0.194	0.032	0.000	0.000	0.216	0.070	0.0184	Total	11.822	
NDA	0.139	0.000	0.000	0.483	0.723	0.779	1.101	0.997	1.021	1.014	1.022	1.311	1.093	0.746	0.873	0.849	0.810	0.997	1.009	1.021	0.784	0.963	0.854	NDA	38.082	

Note: Where the powerline easement overlaps other land uses, the easement takes priority in reference to the land budget

The land areas in this Table are indicative only and do not account for the possible provision of additional tree reserves or other site layout changes that may be required following the completion of detailed arboricultural and ecological assessments.

# APPENDIX 3 - INDICATIVE CROSS SECTIONS

Figure 9. 14.5m ACCESS LEVEL 1  
Loop Road/Reserve Interface

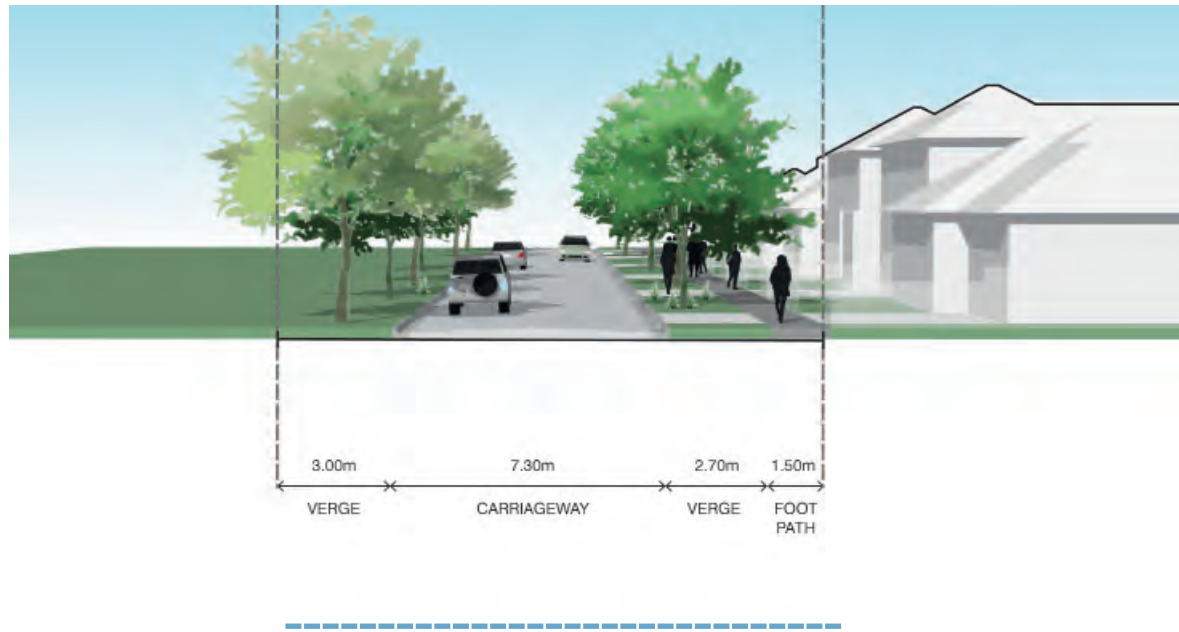


Figure 11. 18m ACCESS LEVEL 2 STREET

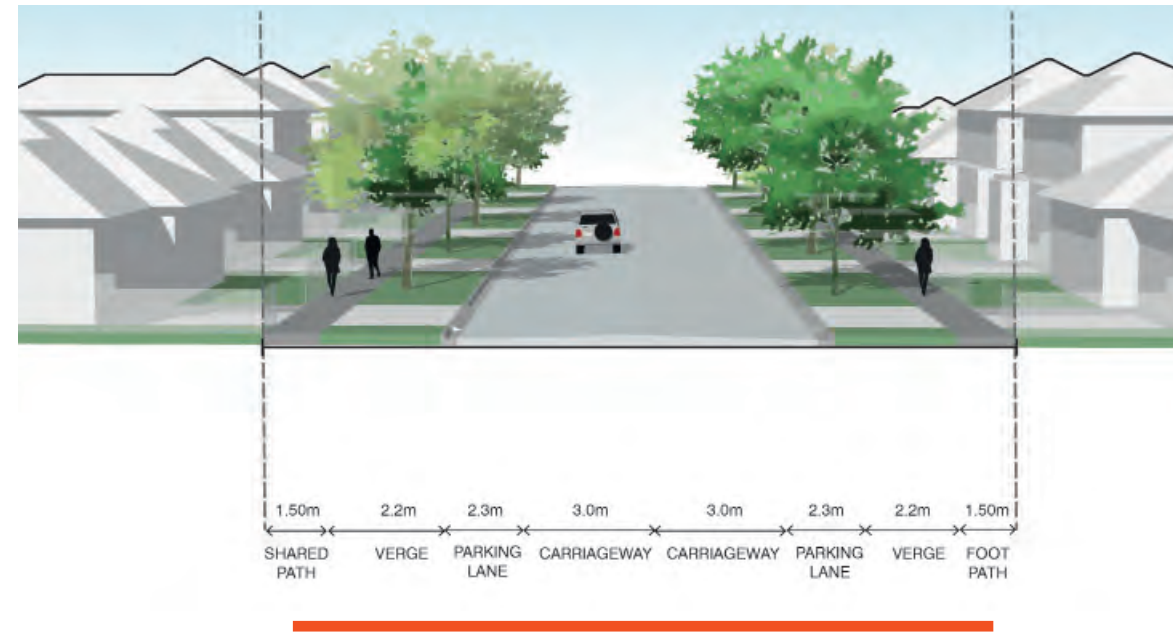


Figure 10. 16m ACCESS LEVEL 1

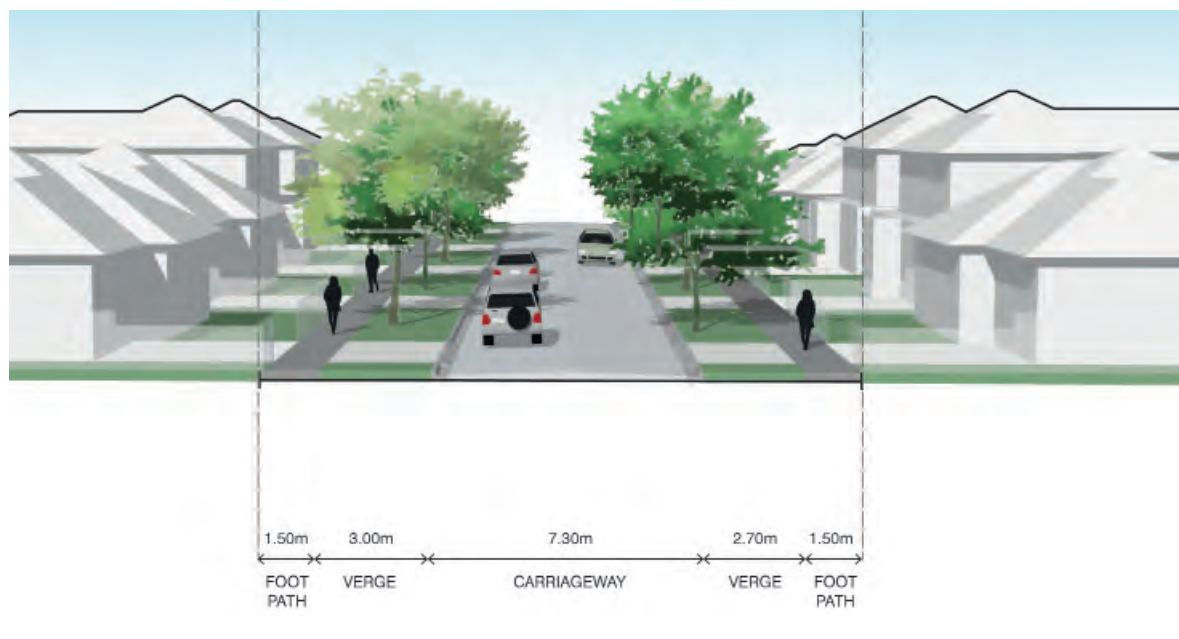


Figure 12. BUS CAPABLE COLLECTOR ROAD

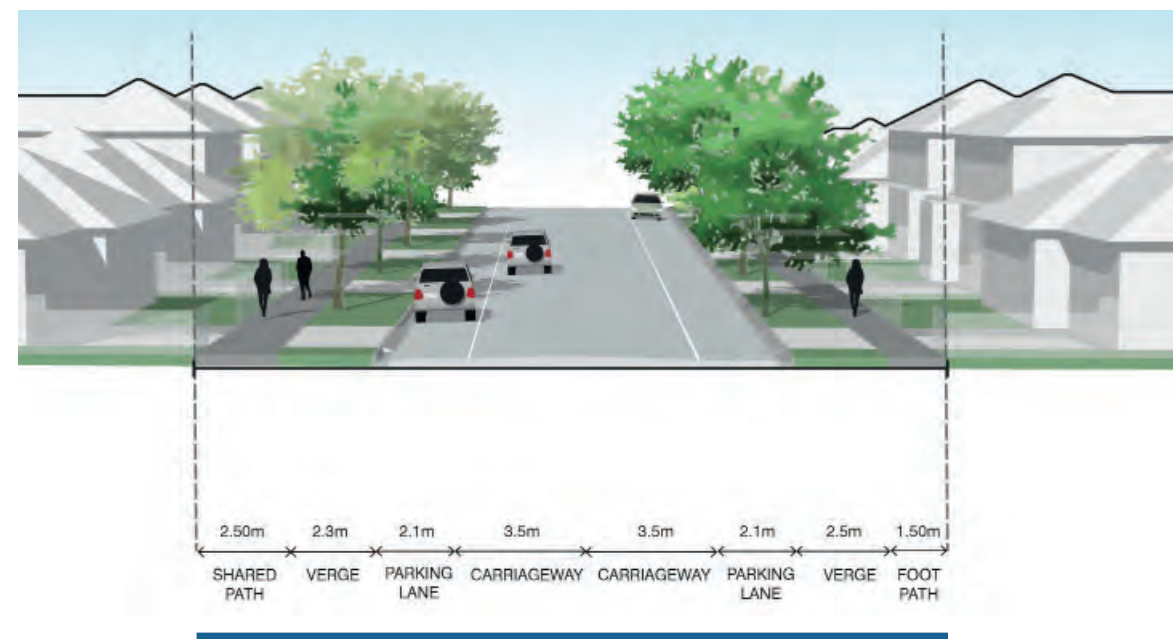
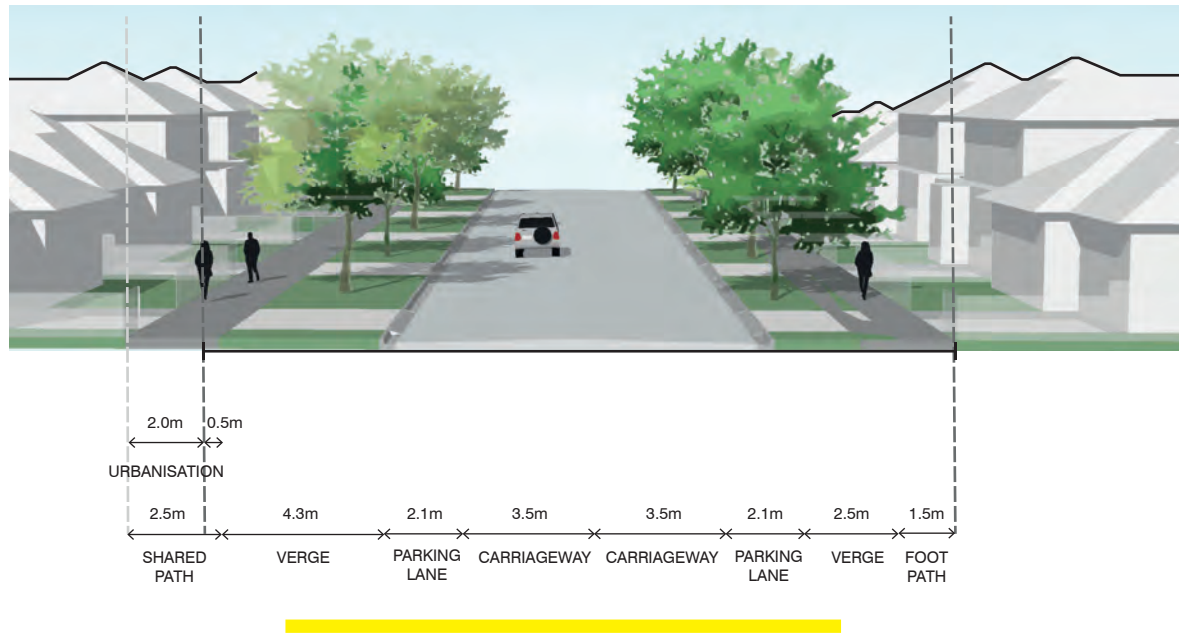


FIGURE 13. COOKES ROAD



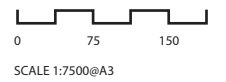
# APPENDIX 4 - TREE RESERVES

## LEGEND

- TREES LOCATED WITHIN TREE RESERVES**
  - River Red Gums; planted or remnant
  - Other species indigenous to the local area; planted or remnant i.e. Manna Gum, Yellow Box, Yellow Gum, Candlebark, Red Box & Swamp Gum
  
- **NON-INDIGENOUS TREES WITHIN TREE RESERVES**  
 Diameter at breast height >60cm  
 Arboricultural rating of Mod. B or higher  
 Useful Life Expectancy (ULE) >20 years
  
- TREES NOT ASSESSED**  
 Trees and other vegetation on these parcels have not been assessed as part of the preparation of this Development Plan. Detailed arboricultural and ecological assessments are required to be completed at planning permit stage. Subject to the findings of those future assessments, it is anticipated that further tree reserves will be required. This will influence the final layout, including the amount of developable land, of these particular sites.



Figure 14. Tree Retention/Removal Plan



Tree ID	Species	Common Name	Age Class	Origin/Type	DBH	Basal Ø	Height	Width N	Width	Width	Width	Health	Structure	Arb. Rating	ULE (yrs)	Comments	TPZ BS (m)	Property
					(cm)	(cm)	(m)	(m)	S (m)	E (m)	W (m)							
1	Eucalyptus mannifera	Brittle Gum	Early-mature	Australian native	43	50	12	2	5	4	4	Fair	Fair to Poor	Mod.C	11-20 y	Past powerline clearance	6	174 Cookes
2	Eucalyptus mannifera	Brittle Gum	Maturing	Australian native	46	53	12	5	4	5	6	Fair	Fair	Mod.B	21-40 y		6	174 Cookes
3	Pinus radiata	Monterey Pine	Maturing	Exotic conifer	42	48	12	3	4	3	4	Fair	Fair	Mod.C	11-20 y		6	174 Cookes
4	Eucalyptus mannifera	Brittle Gum	Maturing	Australian native	42	49	12	4	5	6	5	Fair	Fair	Mod.B	21-40 y		6	174 Cookes
5	Eucalyptus camaldulensis	River Red Gum	Early-mature	Planted Indigenous	45,31	58	9	4	4	3	4	Fair	Fair to Poor	Mod.C	11-20 y	Suppressed	4.5	174 Cookes
6	Callistemon viminalis	Weeping Bottlebrush	Maturing	Australian native	9,8,8,7	28	5	3	3	2	2	Fair	Fair	Low	11-20 y		3	174 Cookes
7	Eucalyptus mannifera	Brittle Gum	Maturing	Australian native	52	61	13	6	7	8	6	Fair	Fair	Mod.B	21-40 y	Acute forks	7	174 Cookes
8	Eucalyptus camaldulensis	River Red Gum	Early-mature	Planted Indigenous	44	58	14	4	3	5	5	Fair	Fair	Mod.B	21-40 y	Acute forks	7	174 Cookes
9	Eucalyptus camaldulensis	River Red Gum	Early-mature	Planted Indigenous	40	48	14	3	4	5	5	Fair	Fair	Mod.B	21-40 y		7	174 Cookes
10	Eucalyptus camaldulensis	River Red Gum	Early-mature	Planted Indigenous	30	37	12	1	3	6	5	Fair	Fair	Mod.B	21-40 y		6	174 Cookes
11	Eucalyptus camaldulensis	River Red Gum	Early-mature	Planted Indigenous	56	67	14	2	6	5	5	Fair	Fair	Mod.B	21-40 y		7	174 Cookes
12	Eucalyptus camaldulensis	River Red Gum	Maturing	Planted Indigenous	106	123	24	8	10	8	8	Fair	Fair to Poor	Mod.A	11-20 y	Codominant stems;Previous failures; not ideally suited given size and adjacent houses	12	174 Cookes
13	Eucalyptus camaldulensis	River Red Gum	Early-mature	Planted Indigenous	47	59	17	4	8	8	4	Fair	Poor	Low	1-5 y	Lost main leader;Over-extended limbs;Suppressed	8.5	174 Cookes
14	Corymbia maculata	Spotted Gum	Maturing	Victorian native	42	49	13	5	3	4	3	Poor	Fair to Poor	Low	1-5 y		6.5	174 Cookes
15	Eucalyptus nicholii	Narrow-leaved Black Peppermint	Maturing	Australian native	38,37	68	12	5	4	4	4	Fair	Poor	Low	11-20 y	Acute forks	6	174 Cookes
16	Eucalyptus camaldulensis	River Red Gum	Early-mature	Planted Indigenous	44	53	9	3	6	4	5	Fair	Fair to Poor	Mod.C	11-20 y	Past stem failure;Previous	4.5	174 Cookes
17	Eucalyptus camaldulensis	River Red Gum	Early-mature	Planted Indigenous	41	50	15	5	5	5	5	Fair	Fair	Mod.B	>40 y		7.5	174 Cookes
18	Eucalyptus mannifera	Brittle Gum	Maturing	Australian native	43	51	13	6	7	5	5	Fair	Fair	Mod.B	21-40 y		6.5	174 Cookes
19	Eucalyptus mannifera	Brittle Gum	Maturing	Australian native	26,17	42	11	5	5	5	5	Fair	Fair	Mod.B	21-40 y		5.5	174 Cookes
20	Eucalyptus camaldulensis	River Red Gum	Early-mature	Planted Indigenous	50,21	59	11	4	4	3	5	Good	Fair	Mod.B	>40 y		5.5	174 Cookes
21	Eucalyptus nicholii	Narrow-leaved Black Peppermint	Maturing	Australian native	42,38	54	9	2	5	2	7	Fair	Poor	Low	11-20 y	Acute forks;Previous failures;Suppressed	4.5	174 Cookes
22	Eucalyptus nicholii	Narrow-leaved Black Peppermint	Maturing	Australian native	48	56	10	2	6	3	4	Fair	Poor	Low	6-10 y	Acute forks;Congested primary union;Included bark	5	174 Cookes
23	Melaleuca armillaris	Bracelet Honey-myrtle	Maturing	Victorian native	24,20,18	60	8	4	5	5	5	Fair	Poor	Low	6-10 y		5	174 Cookes
24	Eucalyptus sideroxylon	Red Ironbark	Maturing	Australian native	95	107	15	8	8	7	6	Fair	Fair	Mod.A	21-40 y	Over-extended limbs	8	174 Cookes
25	Cupressus macrocarpa	Monterey Cypress	Maturing	Exotic conifer	48,41	68	10	4	4	4	4	Fair	Fair	Mod.C	11-20 y		5	174 Cookes
26	Cupressus macrocarpa	Monterey Cypress	Maturing	Exotic conifer	45,33,32,20	73	10	4	4	4	4	Fair	Fair	Mod.C	11-20 y		5	174 Cookes
27	Schinus areira	Peppercorn Tree	Early-mature	Exotic evergreen	36	48	6	4	5	3	4	Fair	Fair	Mod.C	>40 y		4.5	174 Cookes
28	Eucalyptus camaldulensis	River Red Gum	Early-mature	Planted Indigenous	32,14	39	7	2	5	5	4	Fair	Fair to Poor	Mod.C	21-40 y	Suppressed	4.5	174 Cookes
29	Eucalyptus sideroxylon	Red Ironbark	Maturing	Australian native	67,35	38	8	6	6	4	4	Fair	Poor	Low	11-20 y	Codominant stems;Congested primary union;Included bark;Past stem failure	6	174 Cookes
30	Eucalyptus bicostata	Victorian Blue Gum	Over-mature	Victorian native	68,52	95	18	8	8	5	5	Fair to Poor	Very Poor	Very Low	1-5 y	Past stem failure	9	174 Cookes
31	Eucalyptus nicholii	Narrow-leaved Black Peppermint	Early-mature	Australian native	41	45	9	7	1	2	4	Fair	Fair to Poor	Mod.C	11-20 y	Acute forks;Suppressed	4.5	174 Cookes

32	Eucalyptus nicholii	Narrow-leaved	Maturing	Australian native	84	89	11	7	7	6	5	Fair to Poor	Fair to Poor	Mod.C	11-20 y	Acute forks;Codominant stems;Reduced foliage density	7	174
		Black Peppermint																Cookes
33	Eucalyptus nicholii	Narrow-leaved	Early-mature	Australian native	39,38	67	9	5	5	4	5	Fair to Poor	Fair to Poor	Mod.C	11-20 y	Acute forks;Reduced foliage density	5	174
		Black Peppermint			,24													Cookes
34	Eucalyptus botryoides	Southern Mahogany	Over-mature	Victorian native	61	73	9	2	3	2	5	Dead	Poor	Very Low	<1 y		4.5	174
																		Cookes
35	Eucalyptus nicholii	Narrow-leaved	Semi-mature	Australian native	10,10	37	6	2	2	2	2	Fair	Very Poor	Very Low	<1 y	Lopped	3	174
		Black Peppermint																Cookes
36	Eucalyptus nicholii	Narrow-leaved	Early-mature	Australian native	29	34	8	2	1	3	4	Fair	Poor	Low	1-5 y	Lost main leader	4	174
		Black Peppermint																Cookes
37	Eucalyptus nicholii	Narrow-leaved	Maturing	Australian native	34,28	47	10	2	4	4	4	Fair	Fair	Mod.C	11-20 y		5	174
		Black Peppermint			14,14													Cookes
38	Cupressus macrocarpa	Monterey Cypress	Over-mature	Exotic conifer	,12,1	50	10	4	4	4	4	Poor	Fair to Poor	Very Low	<1 y	In irreversible decline	5	174
					2													Cookes
39	Malus sp.	Apple	Maturing	Exotic deciduous	16	18	5	3	3	3	3	Fair	Fair	Low	11-20 y		3	184
																		Cookes
40	Eucalyptus cladocalyx	Sugar Gum	Maturing	Australian native	66	74	20	6	6	5	7	Fair	Fair to Poor	Mod.C	11-20 y	Acute forks;Codominant	10	184
																		Cookes
41	Eucalyptus cladocalyx	Sugar Gum	Maturing	Australian native	46	53	20	6	2	7	4	Fair	Fair	Mod.B	21-40 y	codependent crowns	10	184
																		Cookes
42	Cedrus atlantica f. glauca	Blue Atlas Cedar	Early-mature	Exotic conifer	25	31	7	4	4	4	2	Fair	Fair	Mod.B	21-40 y		4	184
																		Cookes
43	Quercus robur	English Oak	Early-mature	Exotic deciduous	45	51	10	6	7	6	6	Fair	Fair	Mod.A	21-40 y		6.5	184
																		Cookes
44	Eucalyptus cladocalyx 'Nana'	Bushy Sugar Gum	Maturing	Australian native	55	65	8	6	6	7	6	Fair	Fair	Mod.B	11-20 y		6.5	184
																		Cookes
45	Eucalyptus cladocalyx	Sugar Gum	Maturing	Australian native	41	50	18	6	6	6	5	Fair	Fair	Mod.A	21-40 y		9	184
																		Cookes
46	Eucalyptus cladocalyx	Sugar Gum	Early-mature	Australian native	26	34	12	4	4	4	4	Fair	Fair	Mod.C	21-40 y		6	184
																		Cookes
47	Eucalyptus bicostata	Victorian Blue Gum	Semi-mature	Victorian native	12	14	8	2	2	2	2	Fair	Fair	Low	>40 y		4	184
																		Cookes
48	Melaleuca armillaris	Bracelet Honey-myrtle	Maturing	Victorian native	20,18	41	6	4	3	4	3	Fair	Fair to Poor	Low	6-10 y		3.5	184
					,14													Cookes
49	Eucalyptus bicostata	Victorian Blue Gum	Semi-mature	Victorian native	24	30	9	4	4	4	4	Fair	Fair	Mod.C	21-40 y		4.5	184
																		Cookes
50	Eucalyptus leucoxyton	Yellow Gum	Semi-mature	Victorian native	8,7,7,	30	5	3	3	3	3	Good	Poor	Very Low	1-5 y	stump resprout	3	184
					6													Cookes
51	Eucalyptus nicholii	Narrow-leaved	Semi-mature	Australian native	10,10	25	6	3	3	3	3	Fair	Poor	Low	1-5 y	stump resprout	3	184
		Black Peppermint																Cookes
52	Quercus robur	English Oak	Early-mature	Exotic deciduous	46	49	10	6	7	7	7	Fair	Fair	Mod.A	>40 y		7	184
																		Cookes
53	Eucalyptus sideroxyton	Red Ironbark	Early-mature	Australian native	10,10	45	6	3	3	3	3	Good	Poor	Low	1-5 y	Lopped	3	184
					,9													Cookes
54	Eucalyptus cladocalyx 'Nana'	Bushy Sugar Gum	Early-mature	Australian native	25,22	41	8	4	2	2	5	Fair	Poor	Low	1-5 y		4	194
																		Cookes
55	Eucalyptus cladocalyx 'Nana'	Bushy Sugar Gum	Early-mature	Australian native	32	41	8	4	2	6	2	Fair	Poor	Low	6-10 y		4	194
																		Cookes
					22,10													194
56	Eucalyptus leucoxyton	Yellow Gum	Maturing	Victorian native	,9,9,9	55	7	4	2	4	4	Fair	Poor	Low	1-5 y		4	194
																		Cookes
57	Eucalyptus nicholii	Narrow-leaved	Maturing	Australian native	62	73	11	6	3	3	5	Fair to Poor	Fair to Poor	Mod.C	6-10 y	Basal wounds;Tip dieback	5.5	194
		Black Peppermint																Cookes
58	Eucalyptus cladocalyx 'Nana'	Bushy Sugar Gum	Maturing	Australian native	49,19	55	8	3	5	6	3	Fair	Poor	Low	1-5 y		4.5	194
					,12													Cookes
59	Eucalyptus nicholii	Narrow-leaved	Maturing	Australian native	59,38	83	13	5	5	5	4	Fair to Poor	Fair to Poor	Mod.C	6-10 y	Cracks/splits;Tip dieback	6.5	194
		Black Peppermint			83,67													Cookes
60	Eucalyptus bicostata	Victorian Blue Gum	Maturing	Victorian native	,28,2	124	22	7	10	10	9	Good	Fair	Mod.A	11-20 y	Congested primary union	11	194
					6													Cookes
61	Corymbia maculata	Spotted Gum	Maturing	Victorian native	49	57	22	5	4	5	5	Fair	Fair	Mod.A	21-40 y		11	194
																		Cookes
62	Eucalyptus viminalis	Manna Gum	Maturing	Planted Indigenous	59	64	19	3	6	6	5	Fair	Fair to Poor	Mod.C	11-20 y	Codominant stems;Included bark	9.5	194
																		Cookes
63	Eucalyptus viminalis	Manna Gum	Maturing	Planted Indigenous	55,39	83	19	3	3	6	5	Fair	Fair	Mod.B	21-40 y		9.5	194
																		Cookes
64	Eucalyptus viminalis	Manna Gum	Over-mature	Planted Indigenous	95	110	18	7	6	8	8	Dead	Fair to Poor	Very Low	<1 y		9	194
																		Cookes
65	Eucalyptus nicholii	Narrow-leaved	Maturing	Australian native	60	64	16	5	4	6	4	Fair to Poor	Fair to Poor	Mod.C	6-10 y		8	194
		Black Peppermint																Cookes
66	Eucalyptus nicholii	Narrow-leaved	Maturing	Australian native	66	73	14	6	8	6	6	Fair	Fair to Poor	Mod.B	11-20 y	Acute forks	7	194
		Black Peppermint																Cookes
67	Corymbia citriodora	Lemon-scented Gum	Semi-mature	Australian native	25	31	16	3	3	3	3	Fair	Fair	Mod.C	21-40 y		8	194
																		Cookes

68	Eucalyptus bicostata	Victorian Blue Gum	Semi-mature	Victorian native	21	25	12	3	3	3	3	Fair	Fair	Mod.C	>40 y		6	194
69	Corymbia citriodora	Lemon-scented Gum	Maturing	Australian native	42	49	12	6	5	7	5	Fair	Fair	Mod.B	21-40 y		6	194 Cookes
70	Eucalyptus bicostata	Victorian Blue Gum	Semi-mature	Victorian native	18	22	8	2	2	2	2	Fair	Fair	Mod.C	>40 y		4	194 Cookes
71	Eucalyptus bicostata	Victorian Blue Gum	Early-mature	Victorian native	33	41	12	4	4	4	4	Fair	Fair	Mod.C	21-40 y		6	194 Cookes
72	Quercus robur	English Oak	Early-mature	Exotic deciduous	55	59	10	6	5	7	5	Fair	Fair	Mod.B	21-40 y		6	194 Cookes
73	Eucalyptus bicostata	Victorian Blue Gum	Maturing	Victorian native	45	53	10	4	7	5	4	Fair	Fair	Mod.B	21-40 y	Suppressed	5.5	194 Cookes
74	Eucalyptus cladocalyx	Sugar Gum	Maturing	Australian native	43,20	59	10	2	6	3	4	Fair	Poor	Low	6-10 y	Previous failures	5	194 Cookes
					25,22													194
75	Eucalyptus viminalis	Manna Gum	Over-mature	Planted Indigenous	16,1	68	12	2	3	2	3	Poor	Fair to Poor	Very Low	<1 y	In irreversible decline	6	Cookes
					2													
76	Cedrus atlantica f. glauca	Blue Atlas Cedar	Early-mature	Exotic conifer	26	35	12	2	2	2	2	Good	Fair	Mod.B	>40 y		6	194 Cookes
77	Eucalyptus bicostata	Victorian Blue Gum	Maturing	Victorian native	68	75	16	5	5	7	2	Fair to Poor	Fair to Poor	Mod.C	6-10 y	Main leader dead;Previous failures;Reduced foliage density	8	194 Cookes
78	Eucalyptus bicostata	Victorian Blue Gum	Maturing	Victorian native	55,36	88	17	5	3	5	6	Fair to Poor	Poor	Low	6-10 y	Borers;Trunk wounds	8.5	194 Cookes
79	Eucalyptus bicostata	Victorian Blue Gum	Maturing	Victorian native	112	128	18	8	6	8	5	Fair	Fair to Poor	Mod.B	11-20 y	Acute forks;Codominant	9	194 Cookes
80	Corymbia maculata	Spotted Gum	Early-mature	Victorian native	47,23	58	17	7	8	7	4	Fair	Fair to Poor	Mod.B	21-40 y	Over-extended limbs	8.5	194 Cookes
81	Cedrus atlantica f. glauca	Blue Atlas Cedar	Semi-mature	Exotic conifer	17	21	9	2	2	2	2	Fair	Fair	Mod.C	>40 y		4.5	194 Cookes
82	Quercus robur	English Oak	Semi-mature	Exotic deciduous	26	32	7	4	4	4	4	Fair to Poor	Fair	Mod.C	11-20 y	Reduced foliage density	4	194 Cookes
83	Eucalyptus sp.	Gum Tree	Over-mature	Australian native	74	79	16	5	6	7	5	Dead	Fair to Poor	Very Low	<1 y		8	194 Cookes
					26,20													
					19,1													194
84	Pistacia chinensis	Chinese Pistachio	Maturing	Exotic deciduous	6,13	68	6	6	4	5	5	Fair	Fair	Mod.B	21-40 y		5	194 Cookes
					21,13													
					12,1													194
85	Photinia serratifolia	Chinese Hawthorn	Early-mature	Exotic evergreen	0,10	42	6	4	4	4	4	Fair	Fair	Mod.C	11-20 y		4	194 Cookes
86	XCupressocyparis leylandii	Leyland Cypress	Early-mature	Exotic conifer	31	34	9	3	3	3	3	Fair	Fair to Poor	Mod.C	11-20 y	Acute forks	4.5	194 Cookes
87	XCupressocyparis leylandii	Leyland Cypress	Early-mature	Exotic conifer	24,12	34	9	3	3	3	3	Fair	Fair	Mod.C	11-20 y		4.5	194 Cookes
88	Quercus robur	English Oak	Early-mature	Exotic deciduous	41	47	11	6	5	7	5	Fair	Fair	Mod.B	>40 y		6	194 Cookes
89	Quercus robur	English Oak	Semi-mature	Exotic deciduous	27,19	34	8	4	4	2	4	Poor	Fair to Poor	Low	6-10 y	Reduced foliage density;Tip dieback;Trunk decay	4	194 Cookes
90	Quercus robur	English Oak	Semi-mature	Exotic deciduous	31	35	8	3	3	4	4	Poor	Fair to Poor	Low	6-10 y	Declining	4	194 Cookes
91	Quercus robur	English Oak	Semi-mature	Exotic deciduous	29	43	5	3	3	4	3	Poor	Very Poor	Very Low	<1 y	In irreversible decline	3.5	194 Cookes
92	Cupressus sp.	Cypress	Semi-mature	Exotic conifer	15	17	5	2	2	2	2	Fair to Poor	Poor	Low	6-10 y	Acute forks	2.5	194 Cookes
93	Corymbia citriodora	Lemon-scented Gum	Early-mature	Australian native	29,18	51	15	4	6	5	7	Fair	Fair	Mod.B	21-40 y		7.5	194 Cookes
94	Corymbia citriodora	Lemon-scented Gum	Early-mature	Australian native	45	54	16	6	6	8	6	Fair	Fair	Mod.B	21-40 y		8	194 Cookes
95	Quercus robur	English Oak	Early-mature	Exotic deciduous	36	40	9	5	5	5	4	Fair to Poor	Fair	Mod.B	21-40 y	Reduced foliage density	5	194 Cookes
96	Pinus radiata	Monterey Pine	Early-mature	Exotic conifer	26,21	41	12	3	3	3	3	Fair	Poor	Low	6-10 y	Acute forks	6	194 Cookes
97	Pinus radiata	Monterey Pine	Maturing	Exotic conifer	52	57	14	5	5	5	5	Fair	Fair	Mod.B	11-20 y		7	194 Cookes
98	Eucalyptus gonicalyx	Long-leaved Box	Early-mature	Victorian native	31	38	9	5	6	4	4	Fair	Fair to Poor	Mod.B	11-20 y	Incipient decay; kino exudate	5.5	194 Cookes
99	Cupressus sp.	Cypress	Early-mature	Exotic conifer	36	46	0	3	4	5	5	Fair	Fair to Poor	Mod.C	11-20 y	Congested primary union	5	194 Cookes
100	Pinus radiata	Monterey Pine	Maturing	Exotic conifer	45	50	18	6	6	6	6	Fair	Fair	Mod.B	11-20 y	Neighbour's tree	9	194 Cookes
101	Fraxinus angustifolia	Desert Ash	Semi-mature	Exotic deciduous	13,13	24	5	2	3	2	2	Fair	Fair to Poor	Low	6-10 y		2.5	194 Cookes
					12													
102	Fraxinus angustifolia	Desert Ash	Semi-mature	Exotic deciduous	27	31	6	4	4	4	4	Fair	Fair	Low	11-20 y		4	194 Cookes
103	Cupressus arizonica	Rough-barked Arizona Cypress	Early-mature	Exotic conifer	23	27	11	4	4	4	4	Good	Fair	Mod.B	21-40 y		5.5	194 Cookes
104	XCupressocyparis leylandii	Leyland Cypress	Maturing	Exotic conifer	45@base	45	15	4	4	4	4	Fair	Fair to Poor	Mod.B	11-20 y	Congested primary union	7.5	194 Cookes

105	Prunus sp.	Almond, Cherry, Peach, Plum	Early-mature	Exotic deciduous	25@b ase	25	5	4	4	4	4	Fair	Fair to Poor	Low	6-10 y		4	194 Cookes
106	Fraxinus angustifolia	Desert Ash	Semi-mature	Exotic deciduous	19	21	6	4	3	3	3	Fair	Fair to Poor	Low	6-10 y		3.5	194 Cookes
107	Cinnamomum camphora	Camphor Laurel	Early-mature	Exotic evergreen	39@b	39	5	3	3	3	3	Fair	Poor	Low	6-10 y		3	194 Cookes
108	Cupressus sempervirens	Italian Cypress	Early-mature	Exotic conifer	25	32	12	2	2	2	2	Fair	Fair	Mod.B	21-40 y		6	194 Cookes
109	Eucalyptus sp.	Gum Tree	Over-mature	Australian native	53	62	16	0	0	0	0	Dead	Poor	Very Low	<1 y		8	194 Cookes
110	Corymbia citriodora	Lemon-scented Gum	Early-mature	Australian native	30	34	13	6	3	5	5	Fair to Poor	Fair to Poor	Low	6-10 y	Previous failures;Trunk wounds	6.5	194 Cookes
111	Eucalyptus sp.	Gum Tree	Maturing	Australian native	60@b ase	60	13	5	5	5	5	Fair	Very Poor	Very Low	<1 y	multi-stemmed stump resprout	6.5	194 Cookes
112	Corymbia citriodora	Lemon-scented Gum	Semi-mature	Australian native	20,9	31	10	4	3	3	3	Fair to Poor	Fair	Low	11-20 y	Reduced foliage density;Suppressed	5	194 Cookes
113	Eucalyptus nicholii	Narrow-leaved Black Peppermint	Maturing	Australian native	65	71	0	5	7	6	5	Good	Poor	Low	6-10 y	Co-dominant forks;Trunk	6	194 Cookes
114	Eucalyptus nicholii	Narrow-leaved Black Peppermint	Over-mature	Australian native	83@b ase	83	12	7	2	4	4	Fair to Poor	Poor	Low	1-5 y	Lost main leader;Trunk decay	6	194 Cookes
115	Eucalyptus viminalis	Manna Gum	Maturing	Planted Indigenous	77	88	17	10	7	7	8	Fair	Fair to Poor	Mod.C	11-20 y	Bracket fungi;Deadwood >50mm;Previous failures	8.5	194 Cookes
116	Eucalyptus dives	Broad-leaved Peppermint	Early-mature	Planted Indigenous	37	44	11	7	5	6	7	Fair to Poor	Fair to Poor	Mod.C	11-20 y		6.5	194 Cookes
117	Eucalyptus nicholii	Narrow-leaved Black Peppermint	Maturing	Australian native	58,34	77	14	6	6	7	6	Fair to Poor	Fair to Poor	Mod.C	11-20 y	Co-dominant forks;Deadwood >50mm;Reduced foliage density	7	194 Cookes
118	Pyrus calleryana	Callery's Pear	Maturing	Exotic deciduous	9,9,9, g	21	6	4	3	1	3	Fair	Fair	Low	11-20 y		3.5	200 Cookes
119	Malus sylvestris	Wild Crabapple	Maturing	Exotic deciduous	4,4,4, 4,4	14	5	3	3	3	3	Fair	Fair	Low	11-20 y		3	200 Cookes
120	Ulmus glabra 'Camperdownii'	Weeping Elm	Early-mature	Exotic deciduous	14	16	5	2	2	2	2	Fair	Fair	Mod.C	>40 y		2.5	200 Cookes
121	Ulmus parvifolia	Chinese Elm	Early-mature	Exotic deciduous	17,16	28	7	4	4	4	4	Fair	Fair	Mod.B	>40 y		4	200 Cookes
122	Ulmus Xhollandica	Dutch Elm	Semi-mature	Exotic deciduous	14,9, 6,6,6	24	6	3	2	3	3	Fair	Fair to Poor	Low	11-20 y		3	200 Cookes
123	Malus sylvestris	Wild Crabapple	Maturing	Exotic deciduous	7,6,6, 6,6	15	5	3	3	3	3	Fair	Fair	Low	11-20 y		3	200 Cookes
124	Syzygium smithii	Lilly Pilly	Semi-mature	Victorian native	7,6,4	14	5	2	2	2	2	Fair to Poor	Fair	Low	6-10 y		2.5	200 Cookes
125	Ulmus glabra 'Lutescens'	Golden Wych Elm	Semi-mature	Exotic deciduous	13	16	5	2	2	2	2	Fair to Poor	Fair	Low	11-20 y		2.5	200 Cookes
126	Cedrus deodara	Deodar	Semi-mature	Exotic conifer	10	13	3	3	2	2	2	Fair	Fair	Low	>40 y		2.5	200 Cookes
127	Ulmus parvifolia	Chinese Elm	Early-mature	Exotic deciduous	30	37	8	5	5	6	2	Fair	Fair	Mod.B	>40 y		5	200 Cookes
128	Eucalyptus mannifera	Brittle Gum	Semi-mature	Australian native	20	28	12	3	3	3	2	Fair	Fair	Mod.C	>40 y		6	200 Cookes
129	Fraxinus excelsior 'Aurea'	European Golden Ash	Semi-mature	Exotic deciduous	6	14	4	2	1	2	2	Fair	Fair	Low	>40 y	Suppressed	2	200 Cookes
130	Ulmus parvifolia	Chinese Elm	Early-mature	Exotic deciduous	26	35	7	5	5	5	5	Fair	Fair	Mod.B	>40 y		5	200 Cookes
131	Eucalyptus nicholii	Narrow-leaved Black Peppermint	Maturing	Australian native	39	44	12	5	6	6	2	Fair	Fair to Poor	Mod.C	21-40 y	Acute forks;Suppressed	6	200 Cookes
132	Liquidambar styraciflua	Liquidamber	Semi-mature	Exotic deciduous	14	21	7	2	2	2	2	Fair	Fair	Low	21-40 y		3.5	200 Cookes
133	Ulmus glabra 'Lutescens'	Golden Wych Elm	Early-mature	Exotic deciduous	30	35	8	5	5	5	5	Fair	Fair	Mod.B	>40 y		5	200 Cookes
134	Ulmus glabra 'Lutescens'	Golden Wych Elm	Semi-mature	Exotic deciduous	16	21	7	3	4	3	1	Fair	Fair	Mod.C	>40 y		3.5	200 Cookes
135	Eucalyptus cladocalyx 'Nana'	Bushy Sugar Gum	Maturing	Australian native	48	52	8	6	6	4	8	Fair	Fair	Mod.C	11-20 y		6	200 Cookes
136	Ulmus procera	English Elm	Early-mature	Exotic deciduous	23,21 22,21 .20,2	37	8	5	5	5	5	Fair	Fair	Mod.B	21-40 y		5	200 Cookes
137	Fraxinus angustifolia	Desert Ash	Maturing	Exotic deciduous	0,16 12,12	75	8	3	7	7	6	Good	Fair to Poor	Mod.C	21-40 y	Multi-stemmed; stems from common root system	6.5	200 Cookes
138	Photinia serratifolia	Chinese Hawthorn	Maturing	Exotic evergreen	.10,1 0	28	6	3	3	3	3	Fair	Fair	Low	11-20 y		3	200 Cookes
139	Salix sp.	Willow	Maturing	Exotic deciduous	45	50	10	5	5	3	3	Fair	Fair to	Low	6-10 y		5	200 Cookes
					28,16							Poor						200 Cookes



140	Salix sp.	Willow	Maturing	Exotic deciduous	16,1	50	10	5	5	3	3	Fair	Fair to Poor	Low	6-10 y		5	Cookes
					2													
141	Corymbia ficifolia	Red-flowering Gum	Early-mature	Australian native	20	24	5	3	3	3	3	Fair	Fair	Mod.C	21-40 y		3	204 Cookes
142	Corymbia ficifolia	Red-flowering Gum	Early-mature	Australian native	17	22	5	3	3	3	3	Fair	Poor	Low	6-10 y	Bracket fungi;Past stem failure	3	204 Cookes
143	Corymbia eximia	Yellow Bloodwood	Early-mature	Australian native	30	36	7	2	5	4	4	Good	Fair to Poor	Mod.C	11-20 y	Congested primary union	4	204 Cookes
144	Eucalyptus robusta	Swamp Mahogany	Early-mature	Australian native	43	43	7	3	3	4	4	Fair to Poor	Poor	Low	1-5 y	Lost main leader;Previous	4	204 Cookes
145	Eucalyptus elata	River Peppermint	Maturing	Victorian native	49	58	9	3	6	6	4	Fair to Poor	Fair to Poor	Mod.C	11-20 y	Main leader dead	5	204 Cookes
146	Eucalyptus camaldulensis	River Red Gum	Early-mature	Planted Indigenous	41	45	7	2	2	4	2	Fair	Very Poor	Very Low	1-5 y	Lopped	3.5	204 Cookes
147	Corymbia maculata	Spotted Gum	Early-mature	Victorian native	42	50	12	4	5	5	5	Fair	Fair	Mod.B	21-40 y		6	204 Cookes
148	Eucalyptus botryoides	Southern Mahogany	Maturing	Victorian native	48	54	10	4	4	6	5	Fair	Poor	Low	1-5 y	Borers	5.5	204 Cookes
149	Pinus radiata	Monterey Pine	Maturing	Exotic conifer	48	53	13	4	6	5	6	Fair	Fair	Mod.B	21-40 y		6.5	204 Cookes
150	Eucalyptus mannifera	Brittle Gum	Maturing	Australian native	62	74	14	6	3	6	5	Fair	Fair	Mod.A	21-40 y		7	204 Cookes
151	Corymbia maculata	Spotted Gum	Semi-mature	Victorian native	15,12	27	8	1	6	6	1	Fair	Fair to Poor	Low	11-20 y	Acute forks;Codominant stems;Suppressed	4	204 Cookes
152	Eucalyptus mannifera	Brittle Gum	Early-mature	Australian native	35	42	12	4	3	5	2	Fair	Fair	Mod.B	21-40 y		6	204 Cookes
153	Corymbia maculata	Spotted Gum	Early-mature	Victorian native	35,34	51	12	3	5	5	5	Fair	Fair	Mod.B	21-40 y		6	204 Cookes
154	Corymbia maculata	Spotted Gum	Maturing	Victorian native	56	63	14	5	4	6	4	Fair	Poor	Low	1-5 y	Active split;Cavity;Codominant stems	7	204 Cookes
155	Eucalyptus botryoides	Southern Mahogany	Maturing	Victorian native	79	87	14	6	9	8	8	Fair	Fair to Poor	Mod.C	11-20 y	Previous failures;Trunk wounds	8	204 Cookes
156	Corymbia citriodora	Lemon-scented Gum	Semi-mature	Australian native	18	24	13	3	2	3	3	Fair	Fair	Mod.C	>40 y		6.5	204 Cookes
157	Eucalyptus cladocalyx 'Nana'	Bushy Sugar Gum	Maturing	Australian native	78	80	13	7	5	5	6	Fair	Fair to Poor	Mod.C	11-20 y	Past limb failure;Previous failures	6.5	204 Cookes
158	Eucalyptus cladocalyx 'Nana'	Bushy Sugar Gum	Early-mature	Australian native	35	39	10	5	3	5	5	Fair	Fair	Mod.B	21-40 y		5	204 Cookes
159	Eucalyptus microcorys	Tallow Wood	Maturing	Victorian native	56	64	14	5	4	7	5	Good	Fair	Mod.B	21-40 y		7	204 Cookes
160	Corymbia citriodora	Lemon-scented Gum	Maturing	Australian native	38,33,24	73	14	6	8	6	5	Fair	Poor	Low	6-10 y	Main leader dead;Trunk decay	7	204 Cookes
161	Melia azedarach	White Cedar	Early-mature	Australian native	35	41	7	5	5	5	5	Good	Fair	Mod.B	>40 y		5	204 Cookes
162	Corymbia maculata	Spotted Gum	Maturing	Victorian native	55	64	17	5	5	5	5	Good	Fair	Mod.A	>40 y		8.5	204 Cookes
163	Acacia mearnsii	Late Black Wattle	Maturing	Victorian native	16,14,12,10	46	9	5	3	4	4	Fair	Fair	Low	6-10 y		4.5	204 Cookes
164	Corymbia maculata	Spotted Gum	Maturing	Victorian native	65	78	18	5	6	5	5	Good	Fair	Mod.A	21-40 y		9	204 Cookes
165	Grevillea robusta	Silky Oak	Maturing	Australian native	35	38	11	5	5	5	5	Fair	Fair	Mod.B	21-40 y		5.5	204 Cookes
166	Eucalyptus nicholii	Narrow-leaved Black Peppermint	Maturing	Australian native	42	59	10	7	1	4	5	Fair	Poor	Low	6-10 y	Trunk decay;Trunk wounds	5	210 Cookes
167	Robinia pseudoacacia	Locust	Maturing	Exotic deciduous	30	30	6	3	3	3	3	Fair	Fair	Mod.C	11-20 y		3	210 Cookes
168	Zelkova serrata	Japanese Zelkova	Early-mature	Exotic deciduous	22	23	7	4	4	4	3	Fair	Fair	Mod.C	21-40 y		4	210 Cookes
169	Pittosporum undulatum	Sweet Pittosporum	Early-mature	Victorian native	14,12,8,8	25	5	3	3	3	3	Fair	Fair	Low	11-20 y		3	210 Cookes
170	Pyrus calleryana	Callery's Pear	Early-mature	Exotic deciduous	24	28	5	3	3	3	3	Fair	Fair	Mod.C	21-40 y		3	210 Cookes
171	Gleditsia triacanthos	Honey Locust	Early-mature	Exotic deciduous	16,15	23	5	3	4	4	3	Fair	Fair to Poor	Mod.C	11-20 y	Acute forks;Basal decay;Basal wounds	3.5	210 Cookes
172	Pittosporum undulatum	Sweet Pittosporum	Early-mature	Victorian native	17,10	23	5	3	3	3	3	Fair	Fair	Low	11-20 y		3	210 Cookes
173	Cedrus deodara	Deodar	Semi-mature	Exotic conifer	18	22	7	2	2	2	2	Fair	Fair	Mod.C	>40 y		3.5	210 Cookes
174	Cupressus sempervirens	Italian Cypress	Early-mature	Exotic conifer	26	33	9	2	2	2	2	Fair	Fair	Mod.C	>40 y		4.5	210 Cookes
175	Cedrus atlantica f. glauca	Blue Atlas Cedar	Early-mature	Exotic conifer	22	26	8	3	3	3	3	Fair	Fair	Mod.C	>40 y		4	210 Cookes
176	Pittosporum undulatum	Sweet Pittosporum	Early-mature	Victorian native	20	26	5	3	3	3	3	Fair	Fair	Low	11-20 y		3	210 Cookes
					12,10													210 Cookes

177	Photinia serratifolia	Chinese Hawthorn	Maturing	Exotic evergreen	9,9,8	36	5	3	4	3	3	Fair	Fair	Low	11-20 y		3.5	Cookes
178	Zelkova serrata	Japanese Zelkova	Early-mature	Exotic deciduous	17	25	7	4	4	4	3	Fair	Fair	Mod.C	21-40 y		4	210 Cookes
179	Ulmus Xhollandica	Dutch Elm	Early-mature	Exotic deciduous	22	27	9	4	4	4	4	Fair	Fair to Poor	Mod.C	21-40 y	Past stem failure	4.5	210 Cookes
180	Photinia serratifolia	Chinese Hawthorn	Maturing	Exotic evergreen	20,17 .10	31	5	2	3	3	3	Fair	Fair	Low	11-20 y		3	210 Cookes
181	Corymbia ficifolia	Red-flowering Gum	Early-mature	Australian native	19	38	5	3	3	3	3	Fair to Poor	Fair to Poor	Low	6-10 y	past stem removals. epicormic basal shoots	3	210 Cookes
182	Ulmus glabra 'Camperdownii'	Weeping Elm	Early-mature	Exotic deciduous	29	34	3	2	2	3	3	Fair	Fair	Mod.C	21-40 y	Trunk decay	3	210 Cookes
183	Gleditsia triacanthos	Honey Locust	Maturing	Exotic deciduous	27	34	8	4	5	6	5	Fair	Fair	Mod.B	21-40 y		5.5	210 Cookes
184	Gleditsia triacanthos	Honey Locust	Early-mature	Exotic deciduous	16	23	4	3	4	3	3	Fair	Fair	Mod.C	21-40 y		3.5	210 Cookes
185	XCupressocyparis leylandii	Leyland Cypress	Early-mature	Exotic conifer	30	36	8	3	3	3	3	Fair	Fair	Mod.C	21-40 y		4	210 Cookes
186	Robinia pseudoacacia	Locust	Maturing	Exotic deciduous	35	40	6	3	3	3	3	Fair	Fair	Mod.C	11-20 y		3	210 Cookes
187	Robinia pseudoacacia	Locust	Maturing	Exotic deciduous	30	35	5	3	3	3	3	Fair	Fair	Mod.C	11-20 y		3	210 Cookes
188	XCupressocyparis leylandii	Leyland Cypress	Early-mature	Exotic conifer	26	32	7	3	3	3	3	Fair	Fair	Mod.C	21-40 y		3.5	210 Cookes
189	Eucalyptus robusta	Swamp Mahogany	Early-mature	Australian native	35	41	7	3	4	5	4	Fair to Poor	Fair to Poor	Low	6-10 y		4.5	210 Cookes
190	Eucalyptus viminalis	Manna Gum	Maturing	Planted Indigenous	82	95	16	8	9	9	8	Fair	Fair	Mod.A	>40 y	cockatoo damage primary union. possibly remnant.	8.5	210 Cookes
191	Eucalyptus viminalis	Manna Gum	Maturing	Planted Indigenous	67	78	16	6	8	5	8	Fair to Poor	Fair	Mod.B	21-40 y	Deadwood;Tip dieback; possibly remnant.	8	210 Cookes
192	XCupressocyparis leylandii	Leyland Cypress	Maturing	Exotic conifer	51	62	14	3	4	4	5	Fair	Fair	Mod.B	21-40 y		7	210 Cookes
193	Cupressus macrocarpa 'Saligna Aurea'	Weeping Golden Monterey Cypress	Maturing	Exotic conifer	39	46	10	4	3	6	3	Fair	Fair	Mod.B	21-40 y	weeping variety	5	210 Cookes
194	Cupressus torulosa	Bhutan Cypress	Maturing	Exotic conifer	45	50	12	4	4	4	4	Good	Fair	Mod.B	>40 y		6	210 Cookes
195	XCupressocyparis leylandii	Leyland Cypress	Maturing	Exotic conifer	52	54	14	4	4	4	4	Good	Fair	Mod.B	21-40 y		7	210 Cookes
196	Cupressus macrocarpa 'Saligna Aurea'	Weeping Golden Monterey Cypress	Maturing	Exotic conifer	41	49	11	5	6	5	5	Fair	Fair	Mod.B	21-40 y	weeping variety	5.5	210 Cookes
197	Eucalyptus camaldulensis	River Red Gum	Semi-mature	Planted Indigenous	30	38	12	4	6	2	3	Fair	Fair	Mod.C	>40 y	possibly remnant	6	210 Cookes
198	Eucalyptus camaldulensis	River Red Gum	Maturing	Planted Indigenous	60	70	14	6	7	6	7	Fair	Fair	Mod.A	21-40 y		7	210 Cookes
199	Pyrus calleryana	Callery's Pear	Maturing	Exotic deciduous	34	38	6	4	5	4	5	Good	Fair	Mod.C	11-20 y		4.5	210 Cookes
200	Pyrus calleryana	Callery's Pear	Maturing	Exotic deciduous	14,8, 8 21,19	38	6	4	4	4	4	Fair	Fair to Poor	Low	11-20 y		4	210 Cookes
201	Robinia pseudoacacia	Locust	Over-mature	Exotic deciduous	.18,1 6	45	5	4	4	4	4	Fair to Poor	Fair to Poor	Low	1-5 y		4	210 Cookes
202	Ulmus procera	English Elm	Early-mature	Exotic deciduous	17,5, 5,4,4	26	5	4	4	4	4	Fair	Fair to Poor	Mod.C	21-40 y		4	210 Cookes
203	Cedrus deodara	Deodar	Early-mature	Exotic conifer	20	26	9	3	3	3	3	Good	Fair	Mod.B	>40 y		4.5	210 Cookes
204	Eucalyptus bicostata	Victorian Blue Gum	Maturing	Victorian native	104	120	17	8	6	8	9	Fair	Fair	Mod.A	21-40 y	Deadwood >50mm	8.5	210 Cookes
205	Eucalyptus bicostata	Victorian Blue Gum	Early-mature	Victorian native	34	38	17	1	2	6	5	Fair	Fair	Mod.B	>40 y		8.5	210 Cookes
206	Eucalyptus camaldulensis	River Red Gum	Maturing	Planted Indigenous	56	68	16	3	8	7	8	Fair	Fair to Poor	Mod.B	21-40 y	Previous failures	8	210 Cookes
207	Eucalyptus nicholii	Narrow-leaved Black Peppermint	Maturing	Australian native	52	64	12	3	6	7	4	Fair to Poor	Fair to Poor	Mod.C	11-20 y	suppressed	6	210 Cookes
208	Eucalyptus camaldulensis	River Red Gum	Early-mature	Planted Indigenous	38	45	16	3	5	4	5	Fair	Fair to Poor	Mod.C	21-40 y	Acute forks;Codominant	8	210 Cookes
209	Eucalyptus camaldulensis	River Red Gum	Early-mature	Planted Indigenous	19,18 .12,6	45	7	2	4	4	6	Poor	Fair to Poor	Low	1-5 y		5	210 Cookes
210	Eucalyptus bicostata	Victorian Blue Gum	Semi-mature	Victorian native	35	42	13	3	3	3	3	Fair	Fair	Mod.C	>40 y		6.5	210 Cookes
211	Eucalyptus bicostata	Victorian Blue Gum	Maturing	Victorian native	85	102	18	8	8	8	7	Fair	Fair	Mod.A	21-40 y		9	210 Cookes
212	Eucalyptus nicholii	Narrow-leaved Black Peppermint	Maturing	Australian native	60	72	14	5	4	7	4	Fair to Poor	Fair to Poor	Mod.C	6-10 y		7	210 Cookes
213	Eucalyptus camaldulensis	River Red Gum	Maturing	Planted Indigenous	47	57	14	2	7	5	7	Fair to Poor	Fair to Poor	Mod.C	11-20 y	suppressed	7	210 Cookes

214	Eucalyptus nicholii	Narrow-leaved Black Peppermint	Maturing	Australian native	49	55	10	2	4	5	4	Fair to Poor	Fair to Poor	Mod.C	11-20 y		5	210 Cookes
215	Eucalyptus bicostata	Victorian Blue Gum	Maturing	Victorian native	69	83	18	6	6	7	6	Fair	Fair	Mod.A	21-40 y		9	210 Cookes
216	Eucalyptus camaldulensis	River Red Gum	Maturing	Planted Indigenous	54	76	16	4	4	6	8	Fair	Fair	Mod.A	21-40 y		8	210 Cookes
217	Eucalyptus nicholii	Narrow-leaved Black Peppermint	Maturing	Australian native	34	39	10	2	5	4	7	Fair	Fair	Mod.B	21-40 y	suppressed	5.5	210 Cookes
218	Eucalyptus bicostata	Victorian Blue Gum	Maturing	Victorian native	96	116	18	7	8	8	7	Fair	Fair	Mod.A	21-40 y		9	210 Cookes
219	Eucalyptus nicholii	Narrow-leaved Black Peppermint	Maturing	Australian native	54	63	12	2	5	4	4	Fair	Poor	Low	6-10 y	Lost main leader	6	210 Cookes
220	Eucalyptus polyanthemus	Red Box	Maturing	Planted Indigenous	41	48	14	3	6	7	7	Fair	Fair	Mod.B	21-40 y		7	210 Cookes
221	Eucalyptus bicostata	Victorian Blue Gum	Maturing	Victorian native	96	117	18	7	7	8	7	Fair	Fair	Mod.A	21-40 y	Deadwood >50mm	9	210 Cookes
222	Fraxinus angustifolia	Desert Ash	Early-mature	Exotic deciduous	21,18 ,12	73	7	5	4	6	1	Fair	Fair to Poor	Low	11-20 y		4.5	210 Cookes
223	Eucalyptus botryoides	Southern Mahogany	Maturing	Victorian native	80	87	14	5	8	6	8	Fair	Fair to Poor	Mod.B	11-20 y	Acute forks	7	214 Cookes
224	Eucalyptus botryoides	Southern Mahogany	Semi-mature	Victorian native	20	24	9	2	2	2	2	Fair	Fair	Mod.C	21-40 y		4.5	214 Cookes
225	Melaleuca armillaris	Bracelet Honey-myrtle	Maturing	Victorian native	24,13	39	7	4	4	4	3	Fair	Poor	Low	6-10 y		4	214 Cookes
226	Eucalyptus cladocalyx 'Nana'	Bushy Sugar Gum	Maturing	Australian native	48,10	59	8	5	6	5	4	Fair	Fair to Poor	Mod.C	11-20 y	Canker wounds;Deadwood >50mm	5.5	214 Cookes
227	Eucalyptus melliodora	Yellow Box	Maturing	Planted Indigenous	65	73	19	6	6	6	5	Fair	Fair	Mod.B	21-40 y	Acute forks;Codominant	9.5	214 Cookes
228	Eucalyptus viminalis	Manna Gum	Semi-mature	Planted Indigenous	25	32	8	2	2	2	2	Fair	Fair	Mod.C	>40 y		4	214 Cookes
229	Eucalyptus cladocalyx	Sugar Gum	Maturing	Australian native	41	52	8	2	2	2	2	Fair	Very Poor	Very Low	1-5 y	Lost main leader	4	214 Cookes
230	Eucalyptus viminalis	Manna Gum	Maturing	Planted Indigenous	70	77	17	7	9	6	6	Fair	Fair	Mod.A	21-40 y		8.5	214 Cookes
231	Eucalyptus mannifera	Brittle Gum	Maturing	Australian native	38,33	76	14	5	7	3	5	Fair to Poor	Fair to Poor	Low	6-10 y	Main leader dead	7	214 Cookes
232	Melaleuca armillaris	Bracelet Honey-myrtle	Over-mature	Victorian native	15,12 ,8	68	5	8	1	4	4	Fair	Very Poor	Very Low	1-5 y	Subsiding limbs	4.5	214 Cookes
233	Olea europaea	Olive	Semi-mature	Exotic evergreen	10,9	28	5	2	2	2	2	Fair	Fair	Low	21-40 y		2.5	214 Cookes
234	Melaleuca armillaris	Bracelet Honey-myrtle	Maturing	Victorian native	26	29	5	3	3	3	3	Fair	Fair	Low	11-20 y		3	214 Cookes
235	Eucalyptus ovata	Swamp Gum	Maturing	Planted Indigenous	21,20 ,20	70	9	3	7	4	7	Fair	Very Poor	Very Low	1-5 y	Subsiding limbs; stump resprout	5.5	214 Cookes
236	Eucalyptus aff.ovata	Swamp Gum	Early-mature	Planted Indigenous	39	46	18	6	4	5	4	Fair	Fair to Poor	Mod.C	11-20 y	Acute forks	9	214 Cookes
237	Melaleuca linariifolia	Snow in Summer	Maturing	Australian native	10,10 ,10,9, 9	35	4	3	1	2	3	Fair	Fair	Mod.C	11-20 y		2.5	214 Cookes
238	Eucalyptus cladocalyx 'Nana'	Bushy Sugar Gum	Maturing	Australian native	43	51	8	4	3	4	4	Fair	Poor	Low	6-10 y	Previous failures	4	214 Cookes
239	Eucalyptus cladocalyx 'Nana'	Bushy Sugar Gum	Maturing	Australian native	43	51	7	6	1	3	3	Fair	Fair to Poor	Mod.C	11-20 y		3.5	214 Cookes
240	Melaleuca armillaris	Bracelet Honey-myrtle	Maturing	Victorian native	25,18 ,16	48	6	2	5	2	6	Fair	Fair to Poor	Low	6-10 y	Acute forks;Suppressed	4	214 Cookes
241	Grevillea robusta	Silky Oak	Early-mature	Australian native	21,15	35	8	3	2	4	4	Fair	Fair	Mod.C	21-40 y		4	214 Cookes
242	Grevillea robusta	Silky Oak	Maturing	Australian native	19,9	37	6	2	3	3	3	Poor	Fair to Poor	Low	1-5 y		3	214 Cookes
243	Eucalyptus sideroxylon	Red Ironbark	Maturing	Australian native	56	69	17	6	7	5	6	Fair	Poor	Low	6-10 y	Acute forks;Codominant stems;Included bark;Previous failures	8.5	214 Cookes
244	Eucalyptus cladocalyx	Sugar Gum	Maturing	Australian native	60	71	21	9	4	5	5	Fair	Fair to Poor	Mod.C	11-20 y	Borers;Canker wounds;Deadwood >50mm	10.5	214 Cookes
245	Melaleuca armillaris	Bracelet Honey-myrtle	Maturing	Victorian native	34	40	5	3	4	3	3	Fair	Fair to Poor	Low	6-10 y		3.5	214 Cookes
246	Grevillea robusta	Silky Oak	Early-mature	Australian native	29	32	7	4	3	3	3	Fair to Poor	Fair	Mod.C	11-20 y	Tip dieback	3.5	214 Cookes
247	Melaleuca linariifolia	Snow in Summer	Semi-mature	Australian native	34@b ase 28,25	34	4	2	2	2	2	Fair	Fair	Low	>40 y		2	214 Cookes
248	Eucalyptus cladocalyx	Sugar Gum	Early-mature	Australian native	,22,2 0	62	13	5	6	6	6	Fair	Fair to Poor	Mod.C	11-20 y	Multi-stemmed	6.5	214 Cookes
249	Melaleuca armillaris	Bracelet Honey-myrtle	Semi-mature	Victorian native	17,13 ,11	26	5	3	4	2	4	Fair	Fair to Poor	Low	11-20 y		3.5	214 Cookes

250	Eucalyptus viridis	Green Mallee	Maturing	Victorian native	27,24 ,19	44	14	5	6	4	5	Fair	Poor	Low	1-5 y	Included bark forks;Trunk wounds	7	214 Cookes
251	Melaleuca styphelioides	Prickly-leaved Paperbark	Semi-mature	Australian native	14,13 ,13	27	5	1	2	2	2	Fair to Poor	Fair to Poor	Low	11-20 y	Suppressed	2.5	214 Cookes
		Prickly-leaved Paperbark			21,16 ,14,1													214
252	Melaleuca styphelioides		Early-mature	Australian native	4,12	51	8	3	3	3	3	Fair	Fair	Mod.B	21-40 y		4	Cookes
					15,15													214
253	Melaleuca styphelioides	Prickly-leaved Paperbark	Semi-mature	Australian native	,12,1	32	7	2	3	3	3	Fair	Fair to Poor	Mod.C	11-20 y		3.5	Cookes
					2													
254	Eucalyptus nicholii	Narrow-leaved Black Peppermint	Maturing	Australian native	32,21 ,16	43	8	6	3	5	7	Fair to Poor	Poor	Low	6-10 y	Basal wounds;Tip dieback	6	214 Cookes
255	Eucalyptus botryoides	Southern Mahogany	Maturing	Victorian native	38	52	10	6	5	7	4	Fair	Fair to Poor	Mod.C	11-20 y	Trunk wounds; over extended epicormic branches developing	5.5	214 Cookes
256	Eucalyptus sideroxylon	Red Ironbark	Semi-mature	Australian native	32	36	12	2	3	2	3	Fair	Fair to Poor	Mod.C	11-20 y	Acute forks;Deadwood;Past branch failure	6	214 Cookes
257	Grevillea robusta	Silky Oak	Early-mature	Australian native	30	36	9	3	2	2	2	Fair to Poor	Fair	Mod.C	11-20 y	Tip dieback	4.5	214 Cookes
258	Casuarina glauca	Swamp She-oak	Maturing	Australian native	41	50	14	5	5	5	5	Fair	Fair	Mod.C	11-20 y		7	214 Cookes
259	Grevillea robusta	Silky Oak	Early-mature	Australian native	32	37	8	3	3	3	3	Fair	Fair	Mod.B	11-20 y		4	214 Cookes
		Bracelet Honey- myrtle			15,14 ,14,1													214
260	Melaleuca armillaris		Early-mature	Victorian native	1,10	41	5	4	3	2	4	Fair	Fair to Poor	Low	6-10 y		3.5	Cookes
261	Grevillea robusta	Silky Oak	Early-mature	Australian native	24	30	9	3	3	3	3	Fair to Poor	Fair to Poor	Low	11-20 y	Acute forks;Reduced foliage density	4.5	214 Cookes
		Purple Leaf Cherry Plum			15,13													214
262	Prunus cerasifera 'Nigra'		Early-mature	Exotic deciduous	,11,9	18	5	2	3	4	3	Fair to Poor	Fair to Poor	Low	6-10 y		3.5	Cookes
263	Eucalyptus sp.	Gum Tree	Semi-mature	Australian native	13	16	7	2	2	2	2	Fair	Fair	Low	21-40 y		3.5	214 Cookes
264	Eucalyptus aff.botryoides	Southern Mahogany	Maturing	Victorian native	73	82	18	7	7	8	6	Fair	Fair to Poor	Mod.A	21-40 y	Acute forks	9	214 Cookes
265	Eucalyptus sp.	Gum Tree	Semi-mature	Australian native	23	33	7	2	2	4	1	Fair to Poor	Fair to Poor	Low	11-20 y		3.5	214 Cookes
266	Pittosporum undulatum	Sweet Pittosporum	Early-mature	Victorian native	18,18	26	6	4	4	4	4	Fair	Fair	Low	6-10 y	Woody weed sp.	4	214 Cookes
267	Casuarina glauca	Swamp She-oak	Early-mature	Australian native	31	35	12	4	4	4	3	Fair	Fair to Poor	Mod.B	11-20 y	Included bark	6	214 Cookes
268	Eucalyptus melliodora	Yellow Box	Maturing	Planted Indigenous	57,37	73	18	8	8	7	8	Fair	Fair	Mod.A	21-40 y		9	214 Cookes
269	Corymbia ficifolia	Red-flowering Gum	Maturing	Australian native	19,19	34	3	2	3	3	2	Fair	Fair	Mod.C	21-40 y		2.5	220 Cookes
270	Pinus radiata	Monterey Pine	Maturing	Exotic conifer	73	82	18	6	7	5	7	Fair	Fair	Mod.B	21-40 y		9	220 Cookes
271	Pinus pinaster	Maritime Pine	Early-mature	Exotic conifer	26	32	12	2	1	3	3	Fair	Fair	Low	21-40 y	Suppressed	6	220 Cookes
272	Pinus pinaster	Maritime Pine	Maturing	Exotic conifer	42	49	15	4	3	3	5	Fair	Fair	Mod.B	21-40 y		7.5	220 Cookes
273	Pinus radiata	Monterey Pine	Maturing	Exotic conifer	43	50	15	2	5	2	5	Fair	Fair	Mod.C	11-20 y		7.5	220 Cookes
274	Pinus radiata	Monterey Pine	Maturing	Exotic conifer	37	43	14	2	2	2	4	Poor	Fair to Poor	Low	1-5 y		7	220 Cookes
275	Pinus radiata	Monterey Pine	Maturing	Exotic conifer	63	71	15	8	3	8	7	Fair	Fair	Mod.B	21-40 y		7.5	220 Cookes
					26,22													220
276	Melaleuca styphelioides	Prickly-leaved Paperbark	Maturing	Australian native	,12,1	47	8	4	3	3	3	Fair	Fair	Mod.B	21-40 y		4	Cookes
					0													
277	Salix sp.	Willow	Maturing	Exotic deciduous	37	43	8	5	5	5	5	Fair	Fair	Mod.C	11-20 y	Deadwood; centre of dam	5	220 Cookes
278	Cupressus macrocarpa 'Goldcrest'	Golden Monterey Cypress	Early-mature	Exotic conifer	24	33	6	3	3	3	3	Fair to Poor	Fair	Low	6-10 y	cypress canker	3	220 Cookes
279	Cupressus macrocarpa 'Goldcrest'	Golden Monterey Cypress	Maturing	Exotic conifer	35	43	6	4	4	4	4	Fair	Fair	Mod.C	11-20 y	minor dieback	4	220 Cookes
280	Ulmus glabra 'Lutescens'	Golden Wych Elm	Semi-mature	Exotic deciduous	10,10 ,9,9	30	5	4	3	4	3	Fair	Fair	Mod.C	21-40 y		3.5	220 Cookes
281	Corymbia maculata	Spotted Gum	Maturing	Victorian native	55	66	17	6	6	6	5	Good	Fair	Mod.A	21-40 y	Excess end weight	8.5	220 Cookes
282	Acer negundo	Box Elder	Maturing	Exotic deciduous	34,28 ,18	61	7	6	7	5	7	Fair to Poor	Fair to Poor	Mod.C	11-20 y	Borers;Limb wounds;Tip dieback;Trunk	6.5	220 Cookes

283	Quercus robur	English Oak	Maturing	Exotic deciduous	51	62	12	7	6	6	7	Fair	Good	Mod.A	>40 y		6.5	220
284	Quercus robur	English Oak	Semi-mature	Exotic deciduous	24	29	6	3	3	4	4	Fair	Fair	Mod.C	>40 y		4	220
285	Casuarina cunninghamiana	River She-oak	Semi-mature	Australian native	12,11 .10,1 0,9	48	8	4	4	4	4	Fair	Poor	Low	11-20 y	Multi-stemmed	4	220
286	Cupressus macrocarpa	Monterey Cypress	Semi-mature	Exotic conifer	19	23	7	3	3	3	3	Fair	Fair	Mod.C	>40 y		3.5	220
287	Eucalyptus nicholii	Narrow-leaved Black Peppermint	Maturing	Australian native	69	68	14	4	7	5	4	Fair to Poor	Fair	Mod.C	11-20 y	Main leader dead	7	220
288	Melaleuca linariifolia	Snow in Summer	Maturing	Australian native	33,20	41	6	3	3	3	3	Fair	Fair	Mod.C	21-40 y		3	220
289	Corymbia maculata	Spotted Gum	Semi-mature	Victorian native	22	27	12	2	2	2	2	Poor	Fair	Low	1-5 y		6	220
290	Angophora costata	Smooth-barked Apple	Early-mature	Australian native	32	36	9	4	4	4	4	Fair	Fair	Mod.B	>40 y		4.5	220
291	XCupressocyparis leylandii	Leyland Cypress	Semi-mature	Exotic conifer	22	26	9	3	3	3	3	Fair	Fair	Mod.C	21-40 y		4.5	220
292	XCupressocyparis leylandii	Leyland Cypress	Semi-mature	Exotic conifer	22	26	9	3	3	3	3	Fair	Fair	Mod.C	21-40 y		4.5	220
293	Eucalyptus nicholii	Narrow-leaved Black Peppermint	Maturing	Australian native	65,53	92	15	8	7	6	6	Fair	Fair to Poor	Mod.C	11-20 y	Acute forks;Codominant	7.5	220
294	Eucalyptus mannifera	Brittle Gum	Maturing	Australian native	84	96	16	8	7	7	6	Good	Fair	Mod.A	21-40 y	Basal wounds	8	220
295	Cupressus macrocarpa 'Goldcrest'	Golden Monterey Cypress	Over-mature	Exotic conifer	30	34	5	2	2	2	2	Fair to Poor	Very Poor	Very Low	<1 y	extensive trunk decay	2.5	220
296	Cupressus sp.	Cypress	Early-mature	Exotic conifer	28	33	6	3	3	3	3	Fair	Fair	Mod.C	11-20 y		3	220
297	Eucalyptus spathulata	Swamp Mallet	Early-mature	Australian native	35,30 .23	57	14	3	7	5	7	Good	Fair	Mod.A	21-40 y	Excess end weight	7	220
298	Corymbia maculata	Spotted Gum	Early-mature	Victorian native	44	53	14	6	5	6	5	Fair	Fair	Mod.A	21-40 y		7	220
299	Corymbia maculata	Spotted Gum	Early-mature	Victorian native	38	47	11	7	5	7	8	Fair	Fair	Mod.B	21-40 y		7.5	220
300	Melaleuca styphelioides	Prickly-leaved Paperbark	Semi-mature	Australian native	14,13 .13	26	6	2	2	2	2	Fair	Fair	Low	21-40 y		3	220
301	Eucalyptus camaldulensis	River Red Gum	Early-mature	Planted Indigenous	39	46	13	4	5	5	4	Fair	Fair	Mod.B	21-40 y		6.5	224
302	Eucalyptus camaldulensis	River Red Gum	Early-mature	Planted Indigenous	46	52	18	5	5	5	5	Fair	Fair	Mod.B	21-40 y		9	224
303	Eucalyptus sideroxylon	Red Ironbark	Early-mature	Australian native	33	39	11	4	5	5	4	Fair	Fair	Mod.B	21-40 y		5.5	224
304	Corymbia citriodora	Lemon-scented Gum	Early-mature	Australian native	36	42	12	4	6	5	4	Fair	Fair	Mod.B	>40 y		6	224
305	Eucalyptus camaldulensis	River Red Gum	Early-mature	Planted Indigenous	43	48	14	4	7	6	6	Fair	Fair to Poor	Mod.C	11-20 y	Acute forks;Past stem failure	7	224
306	Eucalyptus leucoxydon	Yellow Gum	Maturing	Victorian native	43	48	13	5	6	5	5	Good	Fair	Mod.B	21-40 y	Acute forks	6.5	224
307	Eucalyptus aff.viridis	Green Mallee	Maturing	Victorian native	33,20	53	11	6	6	4	5	Fair to Poor	Fair	Mod.C	6-10 y		6	224
	Allocasuarina torulosa	Rose She-oak	Maturing	Australian native	19,18 .16	37	9	4	3	2	3	Fair	Fair	Mod.C	21-40 y		4.5	224
309	Eucalyptus leucoxydon	Yellow Gum	Maturing	Victorian native	38	45	14	5	5	6	5	Fair	Fair to Poor	Mod.C	11-20 y	Acute forks;Included bark	7	224
310	Ulmus glabra 'Lutescens'	Golden Wych Elm	Early-mature	Exotic deciduous	35,22	50	7	5	5	5	5	Fair	Fair	Mod.B	21-40 y		5	224
311	Ulmus minor 'Variegata'	Silver Elm	Early-mature	Exotic deciduous	40	52	13	6	7	6	6	Good	Fair	Mod.A	>40 y		6.5	224
					14,14 .12,1													224
312	Ulmus glabra 'Lutescens'	Golden Wych Elm	Early-mature	Exotic deciduous	0,10	35	7	4	4	3	4	Fair	Fair	Mod.B	21-40 y		4	224
313	Eucalyptus mannifera	Brittle Gum	Maturing	Australian native	37	43	11	5	3	2	6	Fair	Poor	Low	6-10 y	Past stem failure	5.5	224
314	Corymbia maculata	Spotted Gum	Maturing	Victorian native	42	48	15	4	5	5	5	Fair	Fair	Mod.B	21-40 y		7.5	224
315	Eucalyptus sideroxylon	Red Ironbark	Maturing	Australian native	86	95	13	9	7	8	8	Fair	Poor	Low	6-10 y	Past stem failure	8	224
316	Eucalyptus leucoxydon	Yellow Gum	Maturing	Victorian native	31	42	9	5	5	7	2	Fair	Fair	Mod.B	21-40 y		5	224
317	Grevillea robusta	Silky Oak	Maturing	Australian native	26,24	42	13	4	3	3	3	Good	Fair to Poor	Mod.B	11-20 y	Acute forks;Codominant	6.5	224
318	Grevillea robusta	Silky Oak	Maturing	Australian native	28	36	13	3	3	3	3	Good	Fair	Mod.B	21-40 y		6.5	224
319	Grevillea robusta	Silky Oak	Maturing	Australian native	25	31	11	3	3	3	3	Good	Fair	Mod.B	21-40 y		5.5	224
320	Eucalyptus bancroftii	Bancroft's Red Gum	Early-mature	Australian native	24,23 .13,1 2	37	10	3	5	4	3	Fair	Poor	Mod.C	6-10 y	Included bark forks	5	224
321	Eucalyptus leucoxydon	Yellow Gum	Maturing	Victorian native	50	57	13	6	6	7	5	Fair	Fair to Poor	Mod.C	11-20 y	Codominant stems;Included bark	6.5	224
322	Eucalyptus ovata	Swamp Gum	Over-mature	Planted Indigenous	89	92	18	7	4	5	7	Fair to Poor	Poor	Low	1-5 y		9	224
												Poor						224

323	Eucalyptus leucoxylon	Yellow Gum	Early-mature	Victorian native	21,12	36	8	5	3	4	4	Fair	Fair	Mod.C	21-40 y		4	224 Cookes
324	Eucalyptus bancroftii	Bancroft's Red Gum	Early-mature	Australian native	28	33	9	4	5	5	4	Good	Fair	Mod.B	>40 y		4.5	224 Cookes
325	Grevillea robusta	Silky Oak	Maturing	Australian native	29	34	7	4	3	3	3	Fair	Fair	Mod.C	21-40 y		3.5	224 Cookes
326	Grevillea robusta	Silky Oak	Maturing	Australian native	33	38	8	4	3	4	3	Good	Fair	Mod.B	21-40 y		4	224 Cookes
327	Eucalyptus leucoxylon	Yellow Gum	Early-mature	Victorian native	26	32	8	3	2	4	3	Fair	Fair to Poor	Low	11-20 y		4	224 Cookes
328	Eucalyptus leucoxylon	Yellow Gum	Early-mature	Victorian native	23,20	33	5	2	3	1	4	Fair	Poor	Low	6-10 y		2.5	224 Cookes
329	Eucalyptus camaldulensis	River Red Gum	Semi-mature	Planted Indigenous	27	33	8	4	5	4	3	Fair to Poor	Fair	Mod.C	11-20 y		4.5	224 Cookes
330	Eucalyptus camaldulensis	River Red Gum	Maturing	Planted Indigenous	27	33	21	4	7	7	7	Fair	Fair	Mod.B	21-40 y	Acute forks	10.5	224 Cookes
331	Eucalyptus camaldulensis	River Red Gum	Early-mature	Planted Indigenous	44	47	11	4	4	6	5	Fair to Poor	Fair	Mod.C	11-20 y		5.5	224 Cookes
332	Eucalyptus camaldulensis	River Red Gum	Semi-mature	Planted Indigenous	28	34	8	2	3	5	4	Fair to Poor	Fair	Mod.C	11-20 y		4.5	224 Cookes
333	Grevillea robusta	Silky Oak	Early-mature	Australian native	29	33	8	4	4	3	3	Fair	Fair	Mod.B	21-40 y		4	224 Cookes
334	Corymbia citriodora	Lemon-scented Gum	Early-mature	Australian native	37	44	14	5	4	6	4	Fair	Fair	Mod.B	21-40 y		7	224 Cookes
335	Eucalyptus camaldulensis	River Red Gum	Maturing	Planted Indigenous	71	83	16	6	6	7	5	Good	Fair	Mod.A	>40 y		8	224 Cookes
336	Eucalyptus leucoxylon	Yellow Gum	Early-mature	Victorian native	23	25	5	3	3	6	1	Fair	Fair to Poor	Low	11-20 y		3.5	224 Cookes
337	XCupressocyparis leylandii	Leyland Cypress	Maturing	Exotic conifer	35	40	15	5	5	5	5	Fair	Fair	Mod.B	21-40 y		7.5	230 Cookes
338	Corymbia maculata	Spotted Gum	Early-mature	Victorian native	25,33	48	14	4	4	4	4	Fair	Fair to Poor	Mod.C	11-20 y	Codominant stems	7	230 Cookes
339	Eucalyptus camaldulensis	River Red Gum	Early-mature	Planted Indigenous	51	62	16	4	7	5	7	Fair	Fair	Mod.B	21-40 y		8	230 Cookes
340	Melaleuca armillaris	Bracelet Honey-myrtle	Maturing	Victorian native	18,16 ,14	36	5	3	3	3	3	Fair	Fair	Low	11-20 y		3	230 Cookes
341	Melaleuca armillaris	Bracelet Honey-myrtle	Maturing	Victorian native	18,14 ,10	34	4	4	1	3	4	Fair	Fair	Low	11-20 y		3.5	230 Cookes
342	Eucalyptus camaldulensis	River Red Gum	Maturing	Planted Indigenous	58	68	16	3	9	4	7	Fair	Fair	Mod.B	21-40 y		8	230 Cookes
343	Eucalyptus mannifera	Brittle Gum	Maturing	Australian native	52	60	15	5	4	3	4	Fair	Fair	Mod.B	21-40 y		7.5	230 Cookes
344	Eucalyptus bicostata	Victorian Blue Gum	Maturing	Australian native	50	58	12	6	5	5	3	Fair	Poor	Low	6-10 y	Bracket fungi; Congested primary union	6	230 Cookes
345	Eucalyptus camaldulensis	River Red Gum	Maturing	Planted Indigenous	60	68	16	3	6	4	5	Good	Fair	Mod.B	21-40 y		8	230 Cookes
346	Eucalyptus camaldulensis	River Red Gum	Semi-mature	Planted Indigenous	21	27	10	1	6	3	3	Fair	Fair	Mod.C	21-40 y	Suppressed	5	230 Cookes
347	Eucalyptus saligna	Sydney Blue Gum	Early-mature	Australian native	42	50	16	4	5	6	4	Fair	Fair	Mod.B	21-40 y		8	230 Cookes
348	XCupressocyparis leylandii	Leyland Cypress	Maturing	Exotic conifer	40	52	12	4	5	4	4	Fair	Fair	Mod.B	21-40 y		6	260 Cookes
349	Eucalyptus botryoides	Southern Mahogany	Over-mature	Victorian native	50	58	15	4	3	6	4	Poor	Fair to Poor	Low	1-5 y	Declining	7.5	260 Cookes
350	Cedrus deodara	Deodar	Semi-mature	Exotic conifer	18	24	9	2	3	3	3	Fair	Fair	Mod.C	>40 y		4.5	260 Cookes
351	Cedrus deodara	Deodar	Semi-mature	Exotic conifer	12	17	7	2	2	2	2	Fair	Fair	Mod.C	>40 y		3.5	260 Cookes
352	Ulmus procera	English Elm	Semi-mature	Exotic deciduous	25,21 18,16	34	8	4	4	4	4	Fair	Fair	Mod.C	21-40 y	Suckering; elm leaf beetle	4	260 Cookes
353	Pittosporum undulatum	Sweet Pittosporum	Maturing	Victorian native	16,1 4	38	8	3	3	1	4	Fair	Fair	Low	1-5 y	Woody weed sp.	4	Cookes
354	Cupressus macrocarpa	Monterey Cypress	Early-mature	Exotic conifer	33 79,45 ,48,3	44	11	3	4	3	3	Fair	Fair	Mod.C	21-40 y		5.5	260 Cookes
355	Cupressus macrocarpa	Monterey Cypress	Over-mature	Exotic conifer	5,21	115	14	4	7	7	7	Poor	Fair to Poor	Low	6-10 y	Declining	7	Cookes
356	XCupressocyparis leylandii	Leyland Cypress	Early-mature	Exotic conifer	34	43	9	4	4	3	3	Poor	Fair to Poor	Low	1-5 y	cypress canker	4.5	260 Cookes
357	Cupressus macrocarpa 'Goldcrest'	Golden Monterey Cypress	Maturing	Exotic conifer	66	78	16	7	7	7	7	Fair	Fair	Mod.A	21-40 y	Hangers; surface roots	8	260 Cookes
358	Cupressus macrocarpa 'Goldcrest'	Golden Monterey Cypress	Maturing	Exotic conifer	85,40 ,20,2 0	107	16	7	7	7	7	Fair	Fair	Mod.A	21-40 y		8	260 Cookes
					32,29 ,28,2													260
359	Ulmus glabra 'Lutescens'	Golden Wych Elm	Maturing	Exotic deciduous	2,20	90	10	6	7	7	7	Fair	Fair	Mod.A	21-40 y	elm leaf beetle	7	Cookes

360	Cupressus macrocarpa	Monterey Cypress	Early-mature	Exotic conifer	33	40	8	3	3	1	4	Fair	Fair to Poor	Low	11-20 y	Suppressed	4	260 Cokes
361	Cupressus torulosa	Bhutan Cypress	Early-mature	Exotic conifer	32	34	9	3	2	3	3	Fair	Fair	Mod.C	21-40 y		4.5	260 Cokes
362	Cupressus macrocarpa	Golden Monterey Cypress	Early-mature	Exotic conifer	14,12	25	7	3	3	3	3	Fair	Fair	Mod.C	21-40 y		3.5	260 Cokes
363	Cupressus macrocarpa	Golden Monterey Cypress	Early-mature	Exotic conifer	16,10	28	7	3	3	2	2	Fair	Fair	Mod.C	21-40 y		3.5	260 Cokes
364	Corymbia maculata	Spotted Gum	Semi-mature	Victorian native	12,10	23	10	2	2	2	2	Fair	Poor	Low	6-10 y	Codominant stems;Included bark	5	260 Cokes
365	Quercus canariensis	Algerian Oak	Early-mature	Exotic deciduous	54	63	11	4	6	5	5	Fair to Poor	Fair	Mod.C	11-20 y	Reduced foliage density	5.5	260 Cokes
366	Quercus robur	English Oak	Semi-mature	Exotic deciduous	20,18	37	8	3	4	3	2	Fair	Fair	Mod.C	21-40 y		4	260 Cokes
367	Ulmus minor 'Variegata'	Silver Elm	Semi-mature	Exotic deciduous	17	23	7	3	3	2	3	Fair	Fair to Poor	Mod.C	11-20 y	Acute forks	3.5	260 Cokes
368	Cupressus macrocarpa	Monterey Cypress	Semi-mature	Exotic conifer	23	35	6	4	4	2	3	Fair	Fair	Mod.C	21-40 y		4	260 Cokes
369	Ulmus procera	English Elm	Early-mature	Exotic deciduous	27,22 ,21	49	11	6	5	5	5	Fair	Fair	Mod.C	21-40 y	Suckering	5.5	260 Cokes
370	Cupressus macrocarpa	Golden Monterey Cypress	Semi-mature	Exotic conifer	20	24	7	3	3	3	3	Fair	Fair	Mod.C	21-40 y		3.5	260 Cokes
371	Pinus radiata	Monterey Pine	Maturing	Exotic conifer	70	78	15	8	2	7	7	Fair	Fair	Mod.B	21-40 y		7.5	260 Cokes
372	Pinus radiata	Monterey Pine	Early-mature	Exotic conifer	42	47	13	2	6	4	5	Fair	Fair	Mod.B	21-40 y		6.5	260 Cokes
373	Cupressus macrocarpa	Monterey Cypress	Over-mature	Exotic conifer	50	60	12	4	6	6	5	Poor	Poor	Very Low	1-5 y	In irreversible decline	6	260 Cokes
374	Cupressus macrocarpa	Monterey Cypress	Maturing	Exotic conifer	55	63	14	5	6	6	6	Fair to Poor	Fair to Poor	Low	6-10 y	Declining	7	260 Cokes
375	Salix sp.	Willow	Over-mature	Exotic deciduous	43	54	7	5	5	5	5	Fair	Poor	Low	6-10 y	Basal wounds	5	260 Cokes
376	Eucalyptus cladocalyx	Sugar Gum	Maturing	Australian native	35	43	12	7	3	3	5	Fair	Fair to Poor	Mod.C	11-20 y		6	260 Cokes
377	Eucalyptus cladocalyx	Sugar Gum	Maturing	Australian native	35	42	14	4	3	3	4	Fair	Poor	Low	6-10 y	Borers	7	260 Cokes
378	Eucalyptus cladocalyx	Sugar Gum	Maturing	Australian native	44	50	11	2	4	3	4	Fair	Fair to Poor	Mod.C	11-20 y		5.5	260 Cokes
379	Eucalyptus cladocalyx	Sugar Gum	Early-mature	Australian native	25	29	9	5	3	3	5	Fair	Fair to Poor	Mod.C	11-20 y		4.5	260 Cokes
380	Eucalyptus cladocalyx	Sugar Gum	Semi-mature	Australian native	16	22	8	0	5	3	2	Fair	Fair to Poor	Mod.C	11-20 y		4	260 Cokes
381	Eucalyptus cladocalyx	Sugar Gum	Semi-mature	Australian native	17	22	8	5	2	1	3	Fair	Fair to Poor	Mod.C	11-20 y		4	260 Cokes
382	Eucalyptus botryoides	Southern Mahogany	Maturing	Victorian native	61	68	13	6	6	6	6	Fair	Fair to Poor	Mod.B	11-20 y	Acute forks;Codominant	6.5	274 Cokes
383	Pinus radiata	Monterey Pine	Maturing	Exotic conifer	38	42	13	3	6	2	5	Fair	Fair	Mod.B	11-20 y	Past powerline clearance	6.5	274 Cokes
384	Pinus radiata	Monterey Pine	Maturing	Exotic conifer	38	43	13	3	5	6	3	Fair	Fair	Mod.B	21-40 y	Past powerline clearance	6.5	274 Cokes
385	Schinus areira	Peppercorn Tree	Early-mature	Exotic evergreen	22,16 ,10	43	7	4	3	4	2	Fair	Fair	Mod.C	11-20 y	Past powerline clearance	3.5	274 Cokes
386	Melaleuca armillaris	Bracelet Honey-myrtle	Maturing	Victorian native	36,18 ,16	67	7	5	4	4	4	Fair	Fair to Poor	Low	6-10 y		4.5	274 Cokes
387	Eucalyptus camaldulensis	River Red Gum	Maturing	Indigenous	65	76	15	6	5	6	5	Fair	Fair to Poor	Mod.A	>40 y	Acute forks	7.5	274 Cokes
388	Eucalyptus camaldulensis	River Red Gum	Maturing	Indigenous	153	176	22	12	10	12	13	Fair	Fair	High	>40 y	past southern stem removal. sweet pittosporum at base.	12.5	274 Cokes
389	Eucalyptus camaldulensis	River Red Gum	Maturing	Indigenous	128	145	19	8	10	8	11	Fair	Fair	High	>40 y		9.5	274 Cokes
390	Eucalyptus camaldulensis	River Red Gum	Maturing	Indigenous	116	127	21	11	9	8	12	Fair	Fair	High	21-40 y	Deadwood >50mm;Previous failures; pruning wounds	10.5	274 Cokes
391	Eucalyptus camaldulensis	River Red Gum	Maturing	Planted Indigenous	75	87	20	6	7	4	13	Fair	Fair	Mod.A	21-40 y	Previous failures;Suppressed; group of three possibly planted	10	274 Cokes
392	Eucalyptus camaldulensis	River Red Gum	Maturing	Planted Indigenous	96	111	20	3	12	9	13	Fair to Poor	Fair to Poor	Mod.A	21-40 y	Past stem failure;Suppressed;Tip dieback; failure(s)	11	274 Cokes
393	Eucalyptus camaldulensis	River Red Gum	Maturing	Planted Indigenous	69	78	14	4	9	8	5	Fair	Poor	Mod.C	11-20 y	Past stem failure;Previous failures;Suppressed	7	274 Cokes
394	Eucalyptus camaldulensis	River Red Gum	Maturing	Indigenous	117	132	20	11	14	11	12	Fair	Fair	High	>40 y		12.5	274 Cokes
395	Eucalyptus sideroxylon	Red Ironbark	Early-mature	Australian native	24,23	36	8	4	4	5	5	Fair	Poor	Low	11-20 y	Acute	5	274 Cokes
																forks;Codominant		Cokes

396	Eucalyptus sideroxylon	Red Ironbark	Maturing	Australian native	52	61	15	4	6	3	3	Fair	Poor	Mod.C	11-20 y	Past powerline clearance	7.5	811 Bridge Inn
397	Eucalyptus sideroxylon	Red Ironbark	Maturing	Australian native	51	58	18	4	3	6	6	Fair	Fair to Poor	Mod.C	11-20 y	Acute forks	9	811 Bridge Inn
398	Eucalyptus sideroxylon	Red Ironbark	Maturing	Australian native	54	60	18	3	2	6	5	Fair	Fair to Poor	Mod.C	11-20 y	Acute forks	9	811 Bridge Inn
399	Eucalyptus sideroxylon	Red Ironbark	Maturing	Australian native	43	51	15	4	3	5	4	Fair	Fair to Poor	Mod.C	11-20 y	Acute forks	7.5	811 Bridge Inn
400	Eucalyptus sideroxylon	Red Ironbark	Maturing	Australian native	49	56	17	4	4	6	4	Fair	Fair to Poor	Mod.C	11-20 y	Acute forks	8.5	811 Bridge Inn
401	Eucalyptus sideroxylon	Red Ironbark	Maturing	Australian native	46	51	17	4	3	6	5	Fair	Fair to Poor	Mod.C	11-20 y	Acute forks	8.5	811 Bridge Inn
402	Eucalyptus sideroxylon	Red Ironbark	Maturing	Australian native	54	58	9	6	5	6	6	Fair	Fair to Poor	Mod.C	11-20 y	Acute forks;Past stem failure	6	811 Bridge Inn
403	Eucalyptus camaldulensis	River Red Gum	Maturing	Planted Indigenous	94	113	21	7	7	7	8	Fair	Fair	High	21-40 y	Acute forks; possibly remnant	10.5	811 Bridge Inn
404	Eucalyptus camaldulensis	River Red Gum	Maturing	Indigenous	77	95	10	5	5	5	5	Fair	Poor	Mod.C	11-20 y	Lopped; epicormic leaders	5	811 Bridge Inn
405	Agonis flexuosa	Willow Myrtle	Maturing	Australian native	033,2 2	41	6	4	4	4	4	Fair	Fair to Poor	Mod.C	11-20 y		4	811 Bridge Inn
406	Eucalyptus sideroxylon	Red Ironbark	Maturing	Australian native	72	96	18	7	9	6	7	Fair	Fair to Poor	Mod.B	11-20 y	Acute forks	9	811 Bridge Inn
407	Eucalyptus camaldulensis	River Red Gum	Maturing	Planted Indigenous	65	74	12	4	7	3	7	Fair	Fair to Poor	Mod.B	11-20 y	Basal wounds;Previous failures;Trunk wounds	6	811 Bridge Inn
408	Eucalyptus cladocalyx 'Nana'	Bushy Sugar Gum	Over-mature	Australian native	58	64	8	6	1	4	4	Poor	Poor	Low	1-5 y		4	811 Bridge Inn
409	Eucalyptus camaldulensis	River Red Gum	Semi-mature	Indigenous	16,12 ,7,6	35	8	3	3	3	3	Fair	Fair to Poor	Low	21-40 y		4	811 Bridge Inn
410	Agonis flexuosa	Willow Myrtle	Early-mature	Australian native	14,12 ,8,8	43	6	3	4	4	5	Fair	Fair to Poor	Mod.C	21-40 y		4.5	811 Bridge Inn
411	Gleditsia triacanthos	Honey Locust	Early-mature	Exotic deciduous	12	19	5	3	4	4	5	Fair	Fair	Mod.C	21-40 y		4.5	811 Bridge Inn
412	Acacia melanoxylon	Blackwood	Maturing	Victorian native	20	24	6	4	3	3	3	Fair to Poor	Fair to Poor	Low	6-10 y		3.5	811 Bridge Inn
413	Eucalyptus elata	River Peppermint	Maturing	Victorian native	35	41	13	4	4	5	4	Fair	Poor	Mod.C	11-20 y	Lopped	6.5	811 Bridge Inn
414	Eucalyptus cladocalyx	Sugar Gum	Maturing	Australian native	39	46	15	4	4	5	4	Good	Fair	Mod.B	21-40 y	Codominant stems	7.5	811 Bridge Inn
415	Corymbia maculata	Spotted Gum	Early-mature	Victorian native	31	40	13	4	4	3	3	Fair	Fair	Mod.B	21-40 y		6.5	811 Bridge Inn
416	Corymbia maculata	Spotted Gum	Early-mature	Victorian native	33	40	13	3	5	4	4	Fair	Fair	Mod.B	21-40 y		6.5	811 Bridge Inn
417	Corymbia maculata	Spotted Gum	Early-mature	Victorian native	44	47	15	4	4	4	4	Fair	Fair	Mod.B	21-40 y		7.5	811 Bridge Inn
418	Quercus robur	English Oak	Early-mature	Exotic deciduous	34	42	8	5	6	5	5	Fair	Fair	Mod.B	21-40 y		5.5	811 Bridge Inn
419	Eucalyptus elata	River Peppermint	Early-mature	Victorian native	32,25 ,14	52	9	4	4	5	4	Fair	Poor	Low	11-20 y	Codominant stems;Included bark	4.5	811 Bridge Inn
420	Eucalyptus camaldulensis	River Red Gum	Maturing	Indigenous	93,49	140	16	8	8	8	10	Good	Poor	Mod.C	21-40 y	two past stem failures. several smaller branch/limb failures.	9	811 Bridge Inn
421	Eucalyptus cladocalyx	Sugar Gum	Maturing	Australian native	45	52	18	5	5	5	5	Fair	Fair to Poor	Mod.C	11-20 y	Acute forks;Codominant stems;Previous failures	9	811 Bridge Inn



422	Eucalyptus cladocalyx	Sugar Gum	Maturing	Australian native	39	45	16	4	2	7	6	Fair	Poor	Low	1-5 y	Active split;Codominant stems	8	811 Bridge Inn
423	Eucalyptus botryoides	Southern Mahogany	Maturing	Victorian native	33,30	62	13	1	6	6	6	Fair	Fair to Poor	Low	11-20 y	Suppressed	6.5	811 Bridge Inn
424	Eucalyptus botryoides	Southern Mahogany	Early-mature	Victorian native	36	42	9	4	5	7	0	Fair	Fair to Poor	Low	11-20 y		4.5	811 Bridge Inn
425	Eucalyptus camaldulensis	River Red Gum	Maturing	Indigenous	73,66	130	21	8	9	7	8	Fair	Fair to Poor	Mod.A	21-40 y	split developing in eastern stem	10.5	811 Bridge Inn
426	Eucalyptus botryoides	Southern Mahogany	Early-mature	Victorian native	21,18 ,10,9	37	7	3	3	4	3	Fair	Poor	Low	6-10 y		3.5	811 Bridge Inn
427	Fraxinus 'Raywood'	Claret Ash	Early-mature	Exotic deciduous	12,8, 6	19	6	3	3	3	3	Fair	Fair	Mod.C	21-40 y		3	811 Bridge Inn
428	Eucalyptus elata	River Peppermint	Over-mature	Victorian native	40	45	10	5	5	5	5	Dead	Fair to Poor	Very Low	<1 y		5	811 Bridge Inn
429	Eucalyptus bancroftii	Bancroft's Red Gum	Early-mature	Australian native	36	44	9	4	4	4	4	Fair	Fair	Mod.B	>40 y		4.5	815 Bridge Inn
430	Grevillea robusta	Silky Oak	Early-mature	Australian native	33	45	9	4	5	4	4	Fair	Fair to Poor	Mod.C	11-20 y	Past stem failure	4.5	815 Bridge Inn
431	Cupressus macrocarpa 'Goldcrest'	Golden Monterey Cypress	Early-mature	Exotic conifer	33	45	14	7	6	6	7	Fair	Fair to Poor	Mod.C	11-20 y	Basal wounds;Past stem failure	7	815 Bridge Inn
432	Eucalyptus bancroftii	Bancroft's Red Gum	Early-mature	Australian native	31	34	8	4	5	4	4	Fair	Fair	Mod.B	>40 y		4.5	815 Bridge Inn
433	Eucalyptus bancroftii	Bancroft's Red Gum	Maturing	Australian native	51	59	10	5	5	5	5	Fair	Fair	Mod.B	21-40 y	Acute forks;Codominant stems	5	815 Bridge Inn
434	Eucalyptus nicholii	Narrow-leaved Black Peppermint	Maturing	Australian native	59	64	13	6	7	6	6	Fair	Fair	Mod.B	11-20 y	Deadwood	6.5	815 Bridge Inn
435	Grevillea robusta	Silky Oak	Early-mature	Australian native	28,24	40	11	4	4	4	4	Fair	Poor	Low	6-10 y	Codominant stems;Past stem failure;Trunk decay	5.5	815 Bridge Inn
436	Quercus robur	English Oak	Semi-mature	Exotic deciduous	26	29	8	3	4	4	4	Fair	Fair	Mod.C	>40 y		4	815 Bridge Inn
437	Eucalyptus bicostata	Victorian Blue Gum	Over-mature	Australian native	113	121	15	7	7	7	7	Fair to Poor	Poor	Low	1-5 y	Borers;Congested primary union;Main leader dead	7.5	821 Bridge Inn
438	Eucalyptus bicostata	Victorian Blue Gum	Maturing	Australian native	114	128	19	8	8	8	7	Fair	Fair to Poor	Mod.C	6-10 y	Bracket fungi;Congested primary union	9.5	821 Bridge Inn
439	Eucalyptus botryoides	Southern Mahogany	Early-mature	Victorian native	46	53	15	4	4	7	3	Fair	Fair	Mod.B	11-20 y	Suppressed	7.5	821 Bridge Inn
440	Eucalyptus bicostata	Victorian Blue Gum	Early-mature	Australian native	47	53	15	5	3	2	6	Fair	Fair	Mod.B	21-40 y	Suppressed	7.5	821 Bridge Inn
441	Eucalyptus cladocalyx 'Nana'	Bushy Sugar Gum	Maturing	Australian native	47	53	11	7	3	7	7	Fair	Poor	Low	6-10 y	Over-extended limbs;Previous failures;Suppressed	7	821 Bridge Inn
442	Eucalyptus botryoides	Southern Mahogany	Early-mature	Victorian native	38	46	15	4	4	6	5	Fair to Poor	Fair	Mod.C	11-20 y		7.5	821 Bridge Inn
443	Eucalyptus bicostata	Victorian Blue Gum	Over-mature	Australian native	84	115	17	7	5	5	6	Poor	Fair to Poor	Low	1-5 y	Borers;Declining;Main leader dead	8.5	821 Bridge Inn
444	Eucalyptus viminalis	Manna Gum	Over-mature	Planted Indigenous	62	81	16	7	2	7	5	Fair to Poor	Fair to Poor	Low	6-10 y	Declining;Main leader dead	8	821 Bridge Inn
445	Eucalyptus nicholii	Narrow-leaved Black Peppermint	Semi-mature	Australian native	14,14 ,14	43	6	5	3	4	4	Fair	Fair to Poor	Mod.C	11-20 y		4	821 Bridge Inn
446	Eucalyptus saligna	Sydney Blue Gum	Maturing	Australian native	78	94	21	6	7	5	8	Fair	Fair to Poor	Mod.C	11-20 y	Basal wounds;Borers;Main leader dead;Trunk wounds	10.5	821 Bridge Inn
447	Quercus robur	English Oak	Early-mature	Exotic deciduous	42,41	72	16	7	7	7	7	Fair	Fair	Mod.A	>40 y		8	821 Bridge Inn
					50,14													

448	Ulmus Xhollandica	Dutch Elm	Maturing	Exotic deciduous	,14,1	63	16	7	7	6	7	Fair	Fair	Mod.A	21-40 y	Codominant stems; elm leaf beetle	8	821 Bridge Inn
					2													
449	Eucalyptus sp.	Gum Tree	Maturing	Australian native	40	49	10	4	5	6	4	Poor	Fair	Low	6-10 y	Declining	5	821 Bridge Inn
450	Corymbia maculata	Spotted Gum	Maturing	Victorian native	58	67	20	4	9	6	8	Fair	Fair	Mod.B	21-40 y		10	821 Bridge Inn
451	Eucalyptus saligna	Sydney Blue Gum	Maturing	Australian native	49	58	18	3	8	6	8	Fair	Fair to Poor	Mod.C	11-20 y	Past stem failure	9	821 Bridge Inn
452	Eucalyptus camaldulensis	River Red Gum	Maturing	Planted Indigenous	66	82	21	7	7	6	8	Fair	Fair	Mod.A	>40 y	Codominant stems	10.5	821 Bridge Inn
453	Eucalyptus leucoxylon	Yellow Gum	Maturing	Victorian native	52	58	18	6	3	5	8	Fair	Poor	Low	6-10 y	Lost main leader;Previous failures	9	821 Bridge Inn
454	Eucalyptus nicholii	Narrow-leaved Black Peppermint	Maturing	Australian native	57	65	13	6	5	4	6	Fair	Fair	Mod.B	11-20 y	Suppressed	6.5	821 Bridge Inn
455	Eucalyptus camaldulensis	River Red Gum	Maturing	Planted Indigenous	97	114	21	8	6	8	6	Fair	Fair	High	>40 y	possibly naturally occurring	10.5	821 Bridge Inn
456	Fraxinus angustifolia	Desert Ash	Early-mature	Exotic deciduous	23	29	6	4	4	4	4	Good	Fair	Mod.C	21-40 y		4	821 Bridge Inn
457	Fraxinus 'Raywood'	Claret Ash	Maturing	Exotic deciduous	36,18	43	12	6	5	6	5	Good	Fair	Mod.B	21-40 y		6	821 Bridge Inn
458	Eucalyptus polyanthemos	Red Box	Maturing	Planted Indigenous	41	47	13	3	5	4	4	Fair	Fair to Poor	Mod.C	11-20 y	Acute forks;Codominant stems	6.5	821 Bridge Inn
459	Eucalyptus robusta	Swamp Mahogany	Early-mature	Australian native	29,28	45	14	3	4	4	3	Fair	Fair to Poor	Mod.C	11-20 y		7	821 Bridge Inn
460	Eucalyptus sideroxylon	Red Ironbark	Early-mature	Australian native	39	45	14	5	5	6	4	Fair	Fair	Mod.B	21-40 y		7	821 Bridge Inn
					32,30													
					,28,2													821 Bridge Inn
461	Eucalyptus rubida	Candlebark	Maturing	Planted Indigenous	3,21	74	10	6	6	6	7	Fair to Poor	Fair to Poor	Mod.C	11-20 y		6.5	
462	Eucalyptus cladocalyx 'Nana'	Bushy Sugar Gum	Maturing	Australian native	34,12 ,6	42	7	7	3	5	3	Good	Fair to Poor	Mod.C	11-20 y		5	821 Bridge Inn
463	Eucalyptus mannifera	Brittle Gum	Maturing	Australian native	39	44	9	5	5	5	5	Fair	Fair	Mod.B	21-40 y		5	821 Bridge Inn
464	Eucalyptus melliodora	Yellow Box	Early-mature	Planted Indigenous	39	42	14	4	4	4	6	Fair	Fair	Mod.B	21-40 y		7	821 Bridge Inn
465	Eucalyptus mannifera	Brittle Gum	Maturing	Australian native	35	40	14	4	5	5	5	Fair	Fair	Mod.B	21-40 y		7	821 Bridge Inn
466	Eucalyptus melliodora	Yellow Box	Early-mature	Planted Indigenous	37,12	49	14	5	5	5	5	Fair	Fair	Mod.B	21-40 y		7	821 Bridge Inn
467	Eucalyptus cladocalyx 'Nana'	Bushy Sugar Gum	Early-mature	Australian native	33	40	8	5	5	4	5	Fair	Fair to Poor	Mod.C	11-20 y		5	821 Bridge Inn
468	Eucalyptus mannifera	Brittle Gum	Early-mature	Australian native	37	42	12	4	4	4	4	Fair	Fair	Mod.B	21-40 y		6	821 Bridge Inn
469	Eucalyptus nicholii	Narrow-leaved Black Peppermint	Early-mature	Australian native	34	40	10	4	4	4	5	Fair	Fair to Poor	Mod.C	11-20 y		5	821 Bridge Inn
470	Eucalyptus scoparia	Wallangarra White Gum	Early-mature	Australian native	32	38	10	4	2	4	7	Fair	Fair to Poor	Mod.C	11-20 y		5.5	821 Bridge Inn
471	Eucalyptus scoparia	Wallangarra White Gum	Early-mature	Australian native	35	40	10	3	4	4	4	Fair	Fair	Mod.B	21-40 y		5	821 Bridge Inn
472	Eucalyptus cladocalyx 'Nana'	Bushy Sugar Gum	Maturing	Australian native	38	43	7	7	4	5	6	Fair	Fair to Poor	Mod.C	11-20 y		5.5	821 Bridge Inn
473	Eucalyptus cinerea	Argyle Apple	Maturing	Australian native	59	68	17	8	3	5	5	Fair	Fair	Mod.B	21-40 y		8.5	821 Bridge Inn
474	Eucalyptus aff.bancroftii	Bancroft's Red	Maturing	Australian native	71	87	18	4	7	11	7	Fair to Poor	Fair to Poor	Mod.C	6-10 y	Bracket fungi;Trunk wounds	9	821 Bridge

475	Cedrus deodara	Deodar	Semi-mature	Exotic conifer	25	29	9	2	2	3	1	Fair	Fair	Mod.C	21-40 y	Partly suppressed - crown bias	4.5	845 Bridge Inn
476	Corymbia citriodora	Lemon-scented Gum	Maturing	Australian native	57@base	57	15	6	5	7	7	Fair	Fair	Mod.A	21-40 y		7.5	845 Bridge Inn
477	Casuarina glauca	Swamp She-oak	Maturing	Australian native	36	43	14	4	3	4	4	Fair	Fair	Mod.B	11-20 y		7	845 Bridge Inn
478	Eucalyptus cladocalyx	Sugar Gum	Maturing	Australian native	93@base	93	17	5	7	7	7	Fair	Fair to Poor	Mod.B	11-20 y	Basal decay	8.5	845 Bridge Inn
479	Eucalyptus leucoxylo	Yellow Gum	Early-mature	Victorian native	22,18	40	13	3	5	7	3	Fair	Fair	Mod.B	21-40 y		6.5	845 Bridge Inn
480	Eucalyptus sp.	Gum Tree	Early-mature	Australian native	43@base	43	15	4	5	5	6	Fair	Fair to Poor	Mod.B	11-20 y	Acute forks	7.5	845 Bridge Inn
481	Casuarina cunninghamiana	River She-oak	Early-mature	Australian native	25	32	8	3	2	2	3	Fair to Poor	Fair	Mod.C	11-20 y	Tip dieback	4	845 Bridge Inn
482	Eucalyptus bicostata	Victorian Blue Gum	Early-mature	Victorian native	46@base	46	15	5	4	5	6	Fair	Fair to Poor	Mod.B	11-20 y		7.5	845 Bridge Inn
483	Eucalyptus camaldulensis	River Red Gum	Early-mature	Planted Indigenous	33	38	14	4	4	3	4	Fair	Fair	Mod.B	21-40 y		7	845 Bridge Inn
484	Eucalyptus cladocalyx	Sugar Gum	Early-mature	Australian native	31	35	13	3	3	3	7	Fair to Poor	Fair to Poor	Low	11-20 y	Epicormic shoots	6.5	845 Bridge Inn
485	Eucalyptus camaldulensis	River Red Gum	Semi-mature	Planted Indigenous	23	28	12	1	1	1	1	Fair	Fair to Poor	Low	21-40 y	Llcr	6	845 Bridge Inn
486	Eucalyptus sideroxylo	Red Ironbark	Early-mature	Australian native	35	42	14	5	1	3	2	Fair	Fair to Poor	Mod.B	11-20 y	Included bark forks	7	845 Bridge Inn
487	Eucalyptus botryoides	Southern Mahogany	Early-mature	Victorian native	30,17	51	13	6	3	4	4	Fair to Poor	Fair to Poor	Low	6-10 y	Codominant stems;Epicormic shoots	6.5	845 Bridge Inn
488	Eucalyptus leucoxylo	Yellow Gum	Early-mature	Victorian native	31	35	13	4	3	3	4	Fair	Fair	Mod.B	21-40 y		6.5	845 Bridge Inn
489	Eucalyptus sideroxylo	Red Ironbark	Early-mature	Australian native	35	39	15	3	7	4	6	Fair	Fair	Mod.B	11-20 y	Deadwood >50mm	7.5	845 Bridge Inn
490	Eucalyptus mannifera	Brittle Gum	Early-mature	Australian native	31	35	15	3	3	3	4	Fair	Fair	Mod.B	21-40 y		7.5	845 Bridge Inn
491	Eucalyptus mannifera	Brittle Gum	Early-mature	Australian native	41	51	15	3	3	3	4	Fair	Fair	Mod.B	21-40 y		7.5	845 Bridge Inn
492	Eucalyptus sideroxylo	Red Ironbark	Early-mature	Australian native	36	40	13	4	6	4	6	Fair	Poor	Low	6-10 y	Epicormic shoots;Past limb failure;Past stem failure	6.5	845 Bridge Inn
493	Corymbia citriodora	Lemon-scented Gum	Early-mature	Australian native	29	32	14	5	8	6	8	Fair	Fair	Mod.B	21-40 y		7	845 Bridge Inn
494	Eucalyptus saligna	Sydney Blue Gum	Early-mature	Australian native	42	50	17	4	6	6	5	Fair	Fair to Poor	Mod.B	11-20 y	Co-dominant forks	8.5	845 Bridge Inn
495	Eucalyptus nicholii	Narrow-leaved Black Peppermint	Maturing	Australian native	36,33	48	15	4	5	5	3	Fair	Fair to Poor	Mod.B	11-20 y	Acute forks	7.5	845 Bridge Inn
496	Eucalyptus camaldulensis	River Red Gum	Early-mature	Planted Indigenous	56	63	21	7	6	9	4	Fair	Fair	Mod.A	21-40 y	Deadwood >50mm	10.5	845 Bridge Inn
497	Grevillea robusta	Silky Oak	Early-mature	Australian native	27	33	12	1	3	3	3	Fair	Fair	Mod.B	11-20 y	Partly suppressed - crown bias	6	845 Bridge Inn
498	Pinus radiata	Monterey Pine	Over-mature	Exotic conifer	56	64	22	7	7	7	6	Poor	Fair to Poor	Very Low	<1 y	In irreversible decline; giant pine scale infested	11	845 Bridge Inn
499	Eucalyptus botryoides	Southern Mahogany	Early-mature	Victorian native	26,21,17	70	14	6	5	3	6	Fair	Very Poor	Very Low	<1 y	Stump resprout	7	845 Bridge Inn
500	Melaleuca styphelioides	Prickly-leaved Paperbark	Early-mature	Australian native	28,22	40	11	3	3	3	3	Fair	Fair	Mod.B	21-40 y		5.5	845 Bridge Inn
501	Eucalyptus melliodora	Yellow Box	Maturing	Planted Indigenous	63	74	18	5	7	7	7	Fair	Fair to Poor	Mod.B	11-20 y	Acute forks;Codominant stems	9	845 Bridge Inn

502	Eucalyptus melliodora	Yellow Box	Maturing	Planted Indigenous	44,42	72	18	8	4	7	7	Fair	Fair	Mod.A	21-40 y		9	845 Bridge Inn
503	Eucalyptus scoparia	Wallangarra White Gum	Maturing	Australian native	48	56	15	7	7	5	5	Fair	Fair	Mod.A	21-40 y		7.5	845 Bridge Inn
504	Angophora costata	Smooth-barked Apple	Early-mature	Australian native	37	44	10	5	5	5	5	Fair	Fair	Mod.B	>40 y		5	845 Bridge Inn
505	Eucalyptus scoparia	Wallangarra White Gum	Maturing	Australian native	55	4	16	5	8	7	7	Fair	Fair	Mod.A	21-40 y		8	845 Bridge Inn
506	Eucalyptus saligna	Sydney Blue Gum	Maturing	Australian native	47	56	17	6	5	6	7	Fair	Fair	Mod.A	21-40 y		8.5	845 Bridge Inn
507	Eucalyptus rubida	Candlebark	Maturing	Planted Indigenous	60	78	16	4	7	8	8	Fair	Fair to Poor	Mod.C	11-20 y	Bracket fungi;Deadwood >50mm;Trunk wounds	8	845 Bridge Inn
508	Eucalyptus sp.	Gum Tree	Early-mature	Australian native	29	35	13	3	4	3	2	Fair to Poor	Fair to Poor	Low	6-10 y		6.5	845 Bridge Inn
509	Eucalyptus obliqua	Messmate Stringybark	Early-mature	Victorian native	32,14	39	11	5	1	4	4	Fair	Fair	Mod.C	21-40 y		5.5	845 Bridge Inn
510	Eucalyptus scoparia	Wallangarra White Gum	Maturing	Australian native	50	61	15	6	5	7	7	Fair	Fair	Mod.A	21-40 y		7.5	845 Bridge Inn
511	Corymbia maculata	Spotted Gum	Maturing	Victorian native	41	48	15	4	5	3	6	Fair	Fair	Mod.B	21-40 y		7.5	845 Bridge Inn
512	Corymbia maculata	Spotted Gum	Maturing	Victorian native	45	53	15	4	5	4	6	Fair	Fair	Mod.A	21-40 y		7.5	845 Bridge Inn
513	Eucalyptus nicholii	Narrow-leaved Black Peppermint	Maturing	Australian native	76	89	15	5	6	7	5	Fair	Poor	Mod.C	11-20 y	Active split;Codominant stems;Congested primary union	7.5	845 Bridge Inn
514	Corymbia maculata	Spotted Gum	Maturing	Victorian native	56	67	16	6	8	7	7	Fair	Fair	Mod.A	21-40 y		8	845 Bridge Inn
515	Eucalyptus camaldulensis	River Red Gum	Maturing	Planted Indigenous	70	83	19	7	9	10	9	Fair	Fair	High	21-40 y	Acute forks;Past limb failure	9.5	845 Bridge Inn
516	Eucalyptus leucoxylo	Yellow Gum	Maturing	Victorian native	35,35 ,34	79	10	8	7	7	7	Fair	Fair to Poor	Mod.C	11-20 y	Basal wounds;Multi- stemmed;Past stem failure	7.5	845 Bridge Inn
517	Angophora costata	Smooth-barked Apple	Early-mature	Australian native	48	52	10	6	6	5	5	Fair	Fair	Mod.B	21-40 y		6	845 Bridge Inn
518	Eucalyptus cladocalyx 'Nana'	Bushy Sugar Gum	Maturing	Australian native	35,16	43	6	7	6	2	3	Fair	Poor	Low	6-10 y	Lopped;Previous failures	6.5	845 Bridge Inn
519	Eucalyptus scoparia	Wallangarra White Gum	Maturing	Australian native	35,30	60	10	5	6	5	6	Fair to Poor	Fair to Poor	Mod.C	11-20 y	Acute forks;Reduced foliage density	5.5	845 Bridge Inn
520	Eucalyptus botryoides	Southern Mahogany	Maturing	Victorian native	64	68	10	8	5	5	5	Fair	Fair to Poor	Mod.C	11-20 y	Acute forks;Past limb failure; surface roots	6.5	845 Bridge Inn
521	Eucalyptus botryoides	Southern Mahogany	Maturing	Victorian native	43	50	10	7	4	4	4	Fair	Poor	Low	6-10 y	Past stem failure	5.5	845 Bridge Inn
522	Corymbia citriodora	Lemon-scented Gum	Early-mature	Australian native	33	45	10	4	4	4	7	Fair	Fair to Poor	Mod.C	11-20 y	epicormic leader	5.5	845 Bridge Inn
523	Corymbia citriodora	Lemon-scented Gum	Maturing	Australian native	83	87	16	5	9	7	6	Fair	Fair	Mod.A	21-40 y	Codominant stems;Crossing branches	8	845 Bridge Inn
524	Acacia melanoxylon	Blackwood	Maturing	Indigenous	15	19	8	3	2	1	3	Fair	Fair	Low	21-40 y		4	845 Bridge Inn
525	Acacia melanoxylon	Blackwood	Over-mature	Indigenous	41	45	7	4	2	1	5	Fair to Poor	Very Poor	Very Low	1-5 y	Declining;Lost main leader; several suckers in area	3.5	845 Bridge Inn
526	Melaleuca styphelioides	Prickly-leaved Paperbark	Early-mature	Australian native	32	37	7	4	5	4	3	Fair	Fair	Mod.B	21-40 y		4.5	845 Bridge Inn
527	Eucalyptus nicholii	Narrow-leaved Black Peppermint	Maturing	Australian native	67@b ase	67	14	5	5	5	5	Fair to Poor	Fair to Poor	Mod.C	11-20 y	Tip dieback; Acute codominant stems	7	851 Bridge Inn

528	Eucalyptus nicholii	Narrow-leaved Black Peppermint	Maturing	Australian native	77@b ase	77	13	7	7	6	8	Fair to Poor	Fair	Mod.B	11-20 y	Deadwood >50mm	7	851 Bridge Inn
529	Eucalyptus leucoxylo	Yellow Gum	Early-mature	Victorian native	17,15	38	6	7	3	5	1	Fair	Fair to Poor	Low	11-20 y		5	851 Bridge Inn
530	Eucalyptus leucoxylo	Yellow Gum	Early-mature	Victorian native	18,15	31	6	3	4	4	4	Fair	Fair	Mod.C	11-20 y		4	851 Bridge Inn
531	Eucalyptus nicholii	Narrow-leaved Black Peppermint	Maturing	Australian native	43,27	52	12	7	3	6	7	Fair	Fair	Mod.B	21-40 y		6.5	851 Bridge Inn
532	Eucalyptus cladocalyx	Sugar Gum	Maturing	Australian native	41	50	12	4	3	7	4	Fair	Poor	Low	6-10 y	Bracket fungi;Suppressed;Tru nk wounds	6	851 Bridge Inn
533	Corymbia maculata	Spotted Gum	Early-mature	Victorian native	41@b ase	41	15	4	6	7	7	Fair	Fair	Mod.B	21-40 y		7.5	851 Bridge Inn
534	Eucalyptus mannifera	Brittle Gum	Maturing	Australian native	55	61	15	5	7	8	7	Fair to Poor	Fair	Mod.B	11-20 y	Deadwood >50mm	7.5	851 Bridge Inn
535	Eucalyptus cladocalyx	Sugar Gum	Semi-mature	Australian native	19	22	11	2	4	4	5	Fair to Poor	Poor	Low	6-10 y	Suppressed	5.5	851 Bridge Inn
536	Eucalyptus pulchella	White Peppermint	Early-mature	Australian native	31	38	13	3	4	5	5	Fair to Poor	Fair	Mod.B	11-20 y	Deadwood >50mm	6.5	851 Bridge Inn
537	Corymbia maculata	Spotted Gum	Early-mature	Victorian native	52@b ase	52	16	4	8	4	6	Fair	Fair to Poor	Mod.C	11-20 y	Bracket fungi;Incipient decay	8	851 Bridge Inn
538	Eucalyptus melliodora	Yellow Box	Early-mature	Planted Indigenous	38	44	11	6	3	6	5	Fair	Fair to Poor	Mod.B	11-20 y	Acute forks	5.5	851 Bridge Inn
539	Corymbia maculata	Spotted Gum	Early-mature	Victorian native	46	52	16	5	7	7	6	Good	Fair	Mod.A	21-40 y		8	851 Bridge Inn
540	Eucalyptus camaldulensis	River Red Gum	Early-mature	Planted Indigenous	39	44	11	5	5	7	3	Fair	Fair	Mod.B	21-40 y	Past powerline clearance	5.5	851 Bridge Inn
541	Eucalyptus camaldulensis	River Red Gum	Maturing	Planted Indigenous	67	77	15	7	3	6	8	Fair	Fair	Mod.A	21-40 y	Past powerline clearance	7.5	851 Bridge Inn
542	Pinus radiata	Monterey Pine	Maturing	Exotic conifer	55	57	14	4	5	5	5	Fair	Fair	Mod.B	21-40 y		7	851 Bridge Inn
543	Pinus radiata	Monterey Pine	Early-mature	Exotic conifer	39	43	13	3	5	5	3	Fair	Fair	Mod.B	21-40 y		6.5	851 Bridge Inn
544	Eucalyptus camaldulensis	River Red Gum	Early-mature	Planted Indigenous	52	60	15	5	7	7	6	Fair	Fair	Mod.B	21-40 y	Acute forks;Codominant stems; possibly naturally occurring. subordination pruning if retained.	7.5	851 Bridge Inn
545	Corymbia maculata	Spotted Gum	Early-mature	Victorian native	38	42	16	5	5	6	5	Fair	Fair	Mod.B	21-40 y		8	851 Bridge Inn
546	Pinus radiata	Monterey Pine	Maturing	Exotic conifer	39	43	13	6	6	6	6	Fair	Fair	Mod.B	21-40 y		6.5	851 Bridge Inn
547	Eucalyptus nicholii	Narrow-leaved Black Peppermint	Over-mature	Australian native	42	48	11	4	5	5	5	Fair to Poor	Fair to Poor	Low	6-10 y	Declining	5.5	851 Bridge Inn
548	Eucalyptus mannifera	Brittle Gum	Maturing	Australian native	60	67	15	6	6	7	7	Fair	Fair	Mod.B	21-40 y	Acute forks	7.5	851 Bridge Inn
549	Corymbia ficifolia	Red-flowering Gum	Semi-mature	Australian native	15	18	7	2	2	4	3	Fair	Fair	Low	21-40 y	Suppressed	3.5	851 Bridge Inn
550	Eucalyptus sideroxylo	Red Ironbark	Early-mature	Australian native	28,17	38	7	2	3	4	4	Fair	Fair	Mod.C	21-40 y		4	851 Bridge Inn
551	Eucalyptus nicholii	Narrow-leaved Black Peppermint	Maturing	Australian native	48,42	69	14	4	4	5	5	Fair	Fair to Poor	Mod.C	11-20 y	Active split;Codominant stems	7	851 Bridge Inn
552	Eucalyptus nicholii	Narrow-leaved Black Peppermint	Early-mature	Australian native	37	43	16	4	3	4	4	Fair	Fair	Mod.B	21-40 y		8	851 Bridge Inn
553	Eucalyptus nicholii	Narrow-leaved Black Peppermint	Maturing	Australian native	52	56	16	6	4	4	5	Fair to Poor	Fair to Poor	Mod.C	11-20 y		8	851 Bridge Inn
554	Eucalyptus sideroxylo	Red Ironbark	Maturing	Australian native	54	61	12	7	4	7	3	Fair	Fair	Mod.B	21-40 y		6	851 Bridge Inn

555	Eucalyptus sideroxylon	Red Ironbark	Maturing	Australian native	74	83	15	7	5	7	8	Fair	Fair	Mod.A	21-40 y	Crossing branches;Over-extended limbs;Previous	7.5	851 Bridge Inn
556	Corymbia maculata	Spotted Gum	Early-mature	Victorian native	37	43	14	6	5	7	5	Fair	Poor	Low	6-10 y	Congested primary union;Multi-stemmed	7	851 Bridge Inn
557	Corymbia maculata	Spotted Gum	Maturing	Victorian native	44	49	14	6	6	6	6	Good	Fair	Mod.A	>40 y		7	851 Bridge Inn
558	Eucalyptus nicholii	Narrow-leaved Black Peppermint	Over-mature	Australian native	44	49	7	4	4	6	5	Fair to Poor	Poor	Low	1-5 y	Lost main leader	5.5	851 Bridge Inn
559	Corymbia citriodora	Lemon-scented Gum	Early-mature	Australian native	29	36	11	5	4	5	2	Fair	Fair	Mod.C	11-20 y		5.5	851 Bridge Inn
560	Corymbia citriodora	Lemon-scented Gum	Early-mature	Australian native	39	45	15	4	5	5	4	Fair	Fair	Mod.B	21-40 y		7.5	851 Bridge Inn
561	Corymbia citriodora	Lemon-scented Gum	Early-mature	Australian native	41	44	15	6	3	6	5	Fair	Fair	Mod.B	21-40 y		7.5	851 Bridge Inn
562	Pinus radiata	Monterey Pine	Early-mature	Exotic conifer	35	41	12	4	3	3	3	Fair	Fair	Mod.C	21-40 y		6	851 Bridge Inn
563	Eucalyptus spathulata	Swamp Mallet	Early-mature	Australian native	18,18	27	9	5	2	5	5	Fair	Fair	Mod.C	11-20 y	Past powerline clearance	5	851 Bridge Inn
564	Eucalyptus viminalis	Manna Gum	Maturing	Planted Indigenous	81	97	18	7	7	7	8	Fair	Fair to Poor	Mod.C	11-20 y	Acute forks;Basal wounds;Borers;Trunk wounds	9	861 Bridge Inn
565	Eucalyptus camaldulensis	River Red Gum	Maturing	Indigenous	88	104	18	9	9	9	9	Fair	Fair	High	>40 y		9	861 Bridge Inn
566	Corymbia maculata	Spotted Gum	Maturing	Victorian native	48	56	18	5	5	5	5	Fair	Fair	Mod.A	21-40 y		9	861 Bridge Inn
	Eucalyptus viminalis	Manna Gum	Early-mature	Planted Indigenous	37	44	17	4	4	2	4	Fair	Fair to Poor	Mod.C	11-20 y	Acute forks	8.5	861 Bridge Inn
568	Eucalyptus scoparia	Wallangarra White Gum	Early-mature	Australian native	41	48	17	3	5	1	6	Fair	Fair	Mod.B	21-40 y		8.5	861 Bridge Inn
569	Eucalyptus pulchella	White Peppermint	Early-mature	Australian native	17,16	43	9	3	3	2	3	Fair	Fair	Mod.C	11-20 y	Codominant stems	4.5	861 Bridge Inn
570	Eucalyptus polyanthemos	Red Box	Maturing	Planted Indigenous	53	59	15	5	6	6	5	Good	Poor	Mod.C	11-20 y	Active split;Codominant stems; requires subordination pruning if retained.	7.5	861 Bridge Inn
571	Eucalyptus polyanthemos	Red Box	Early-mature	Planted Indigenous	34	40	11	4	2	2	3	Fair to Poor	Fair to Poor	Low	6-10 y		5.5	861 Bridge Inn
572	Eucalyptus leucoxylo	Yellow Gum	Early-mature	Victorian native	17,16	38	7	6	3	3	6	Fair	Fair	Mod.C	11-20 y		4.5	861 Bridge Inn
573	Eucalyptus scoparia	Wallangarra White Gum	Early-mature	Australian native	35	42	14	3	5	5	3	Fair to Poor	Fair to Poor	Mod.C	11-20 y		7	861 Bridge Inn
574	Eucalyptus camaldulensis	River Red Gum	Maturing	Indigenous	96	110	24	11	9	9	8	Fair	Fair to Poor	Mod.A	21-40 y	Acute forks;Bracket fungi;Limb wounds;Past limb failure	12	861 Bridge Inn
575	Eucalyptus viminalis	Manna Gum	Maturing	Planted Indigenous	89	110	24	10	5	10	6	Fair	Fair	High	21-40 y		12	861 Bridge Inn
576	Eucalyptus viminalis	Manna Gum	Maturing	Planted Indigenous	59	72	19	6	5	4	6	Fair	Fair	Mod.A	21-40 y	Deadwood >50mm; damaged surface roots	9.5	861 Bridge Inn
577	Eucalyptus scoparia	Wallangarra White Gum	Maturing	Australian native	36	44	16	3	5	2	5	Fair	Fair	Mod.B	21-40 y		8	861 Bridge Inn
578	Eucalyptus scoparia	Wallangarra White Gum	Early-mature	Australian native	34	40	15	5	5	2	5	Fair	Fair	Mod.B	21-40 y		7.5	861 Bridge Inn
579	Eucalyptus scoparia	Wallangarra White Gum	Maturing	Australian native	43	51	17	5	5	5	5	Fair	Fair	Mod.B	21-40 y		8.5	861 Bridge Inn

580	Eucalyptus	River Red Gum	Maturing	Indigenous	58,46	119	23	5	11	10	8	Fair	Fair to Poor	Mod.A	21-40 y	Codominant stems; Congested primary union; Included bark	11.5	861 Bridge
	camaldulensis				,44													Inn
581	Eucalyptus sargentii	Salt River Gum	Maturing	Australian native	53	60	17	5	6	9	6	Fair	Poor	Low	6-10 y	Bracket fungi; Included bark	8.5	861 Bridge Inn
582	Eucalyptus sargentii	Salt River Gum	Maturing	Australian native	44	48	12	6	4	3	4	Fair	Fair to Poor	Mod.C	11-20 y	Suppressed; Trunk wounds	6	861 Bridge Inn
583	Eucalyptus leucoxylon	Yellow Gum	Early-mature	Victorian native	27	34	12	2	6	1	5	Fair	Fair to Poor	Mod.C	11-20 y	Limb wounds	6	861 Bridge Inn
584	Eucalyptus sideroxylon	Red Ironbark	Maturing	Australian native	36	43	14	4	4	8	3	Fair	Fair	Mod.B	21-40 y		7	861 Bridge Inn
585	Eucalyptus sideroxylon	Red Ironbark	Maturing	Australian native	36	42	14	4	3	7	3	Fair	Fair	Mod.B	21-40 y		7	861 Bridge Inn
586	Eucalyptus scoparia	Wallangarra White Gum	Early-mature	Australian native	33	39	14	3	5	2	5	Fair	Fair	Mod.B	21-40 y		7	861 Bridge Inn
587	Corymbia maculata	Spotted Gum	Early-mature	Victorian native	36	44	17	3	4	5	5	Fair to Poor	Fair	Mod.B	11-20 y		8.5	861 Bridge Inn
588	Melaleuca styphelioides	Prickly-leaved Paperbark	Early-mature	Australian native	28	34	9	4	4	4	4	Fair	Fair	Mod.B	21-40 y		4.5	861 Bridge Inn
589	Eucalyptus scoparia	Wallangarra White Gum	Maturing	Australian native	50	61	16	8	8	4	7	Fair	Fair	Mod.A	21-40 y		8	861 Bridge Inn
590	Eucalyptus saligna	Sydney Blue Gum	Maturing	Australian native	76	89	23	9	11	11	6	Fair	Fair to Poor	Mod.C	11-20 y	Bracket fungi; Trunk wounds	11.5	861 Bridge Inn
591	Corymbia citriodora	Lemon-scented Gum	Semi-mature	Australian native	14	17	12	3	3	3	3	Fair	Poor	Low	6-10 y		6	861 Bridge Inn
592	Angophora costata	Smooth-barked Apple	Semi-mature	Australian native	25	29	9	4	3	4	4	Fair	Fair	Mod.C	>40 y		4.5	861 Bridge Inn
593	Angophora costata	Smooth-barked Apple	Semi-mature	Australian native	16,9,9,9	38	7	3	3	3	4	Fair to Poor	Fair to Poor	Low	6-10 y		3.5	861 Bridge Inn
594	Eucalyptus viminalis	Manna Gum	Early-mature	Planted Indigenous	66	82	18	7	8	6	7	Fair	Fair	Mod.B	21-40 y	Acute forks	9	861 Bridge Inn
595	Eucalyptus cladocalyx	Sugar Gum	Maturing	Australian native	50	59	20	7	6	6	6	Fair	Fair	Mod.B	11-20 y	Canker wounds	10	861 Bridge Inn
596	Eucalyptus sideroxylon	Red Ironbark	Early-mature	Australian native	32,12	36	12	3	3	3	3	Fair	Fair	Mod.C	21-40 y		6	861 Bridge Inn
597	Acacia baileyana	Cootamundra Wattle	Over-mature	Australian native	26	34	7	5	5	5	5	Fair to Poor	Fair to Poor	Low	1-5 y		5	861 Bridge Inn
598	Eucalyptus saligna	Sydney Blue Gum	Maturing	Australian native	65	73	16	9	6	8	7	Fair	Fair	Mod.B	21-40 y	Past stem failure; Trunk wounds	8	861 Bridge Inn
599	Corymbia maculata	Spotted Gum	Maturing	Victorian native	50	56	16	5	6	6	7	Fair	Fair	Mod.B	21-40 y	Codominant stems; Previous failures	8	861 Bridge Inn
600	Eucalyptus camaldulensis	River Red Gum	Semi-mature	Planted Indigenous	21	23	6	2	2	2	2	Poor	Fair to Poor	Low	6-10 y		3	861 Bridge Inn
601	Eucalyptus viminalis	Manna Gum	Maturing	Planted Indigenous	70	79	16	7	9	7	8	Fair to Poor	Fair to Poor	Mod.B	11-20 y		8	861 Bridge Inn
602	Eucalyptus camaldulensis	River Red Gum	Semi-mature	Planted Indigenous	8	11	5	1	1	1	1	Poor	Fair to Poor	Very Low	1-5 y		2.5	861 Bridge Inn
603	Eucalyptus camaldulensis	River Red Gum	Semi-mature	Planted Indigenous	10	11	5	1	2	1	2	Poor	Fair to Poor	Very Low	1-5 y		2.5	861 Bridge Inn
604	Eucalyptus scoparia	Wallangarra White Gum	Early-mature	Australian native	31	37	12	5	2	2	5	Fair	Fair to Poor	Mod.C	11-20 y		6	861 Bridge Inn
605	Eucalyptus sargentii	Salt River Gum	Maturing	Australian native	78	78	12	3	8	7	7	Fair	Poor	Low	6-10 y	Previous failures	7	861 Bridge Inn
606	Eucalyptus viminalis	Manna Gum	Maturing	Planted Indigenous	93,35	120	15	8	9	9	8	Fair	Fair to Poor	Mod.A	11-20 y	Bracket fungi	8.5	861 Bridge Inn
607	Eucalyptus pulchella	White Peppermint	Early-mature	Australian native	23	28	10	4	3	5	7	Fair	Fair	Mod.C	21-40 y		6	861 Bridge

608	Eucalyptus leucoxylo	Yellow Gum	Maturing	Victorian native	55	61	12	6	6	6	6	Fair	Fair to Poor	Mod.B	11-20 y	Acute forks	6	861 Bridge Inn
609	Eucalyptus camaldulensis	River Red Gum	Maturing	Planted Indigenous	70	83	20	6	9	7	7	Fair	Fair	Mod.B	21-40 y	Acute forks;Codominant stems	10	861 Bridge Inn
610	Eucalyptus pulchella	White Peppermint	Semi-mature	Australian native	14	19	12	2	2	2	3	Fair	Fair	Mod.C	21-40 y		6	861 Bridge Inn
611	Eucalyptus camaldulensis	River Red Gum	Early-mature	Planted Indigenous	31,22	51	16	4	4	5	6	Fair	Fair to Poor	Mod.C	11-20 y	Acute forks;Codominant stems;Past powerline clearance	8	861 Bridge Inn
612	Eucalyptus viminalis	Manna Gum	Maturing	Planted Indigenous	55	62	11	2	7	1	4	Fair	Poor	Low	1-5 y	Basal decay;Trunk decay	5.5	861 Bridge Inn
613	Eucalyptus leucoxylo	Yellow Gum	Early-mature	Victorian native	42	47	12	5	6	5	5	Good	Fair	Mod.A	21-40 y		6	861 Bridge Inn
614	Melia azedarach	White Cedar	Semi-mature	Australian native	15	18	5	3	3	3	3	Fair	Fair	Low	11-20 y		3	861 Bridge Inn
615	Melia azedarach	White Cedar	Semi-mature	Australian native	18	20	6	3	3	2	4	Fair	Fair	Low	11-20 y		3	861 Bridge Inn
616	Melia azedarach	White Cedar	Semi-mature	Australian native	21@base	21	6	2	2	2	3	Fair to Poor	Fair	Low	11-20 y		3	861 Bridge Inn
617	Eucalyptus mannifera	Brittle Gum	Early-mature	Australian native	33	39	11	3	4	5	3	Fair	Fair to Poor	Mod.B	21-40 y	Acute forks	5.5	861 Bridge Inn
618	Eucalyptus sp.	Gum Tree	Early-mature	Australian native	30	32	7	3	5	5	4	Fair	Poor	Low	6-10 y	Basal decay;Trunk decay	4.5	861 Bridge Inn
619	Eucalyptus mannifera	Brittle Gum	Early-mature	Australian native	29	36	9	4	3	2	4	Fair	Fair to Poor	Mod.B	11-20 y		4.5	861 Bridge Inn
620	Eucalyptus gomphocephala	Tuart	Early-mature	Planted Indigenous	35	41	11	3	2	2	2	Fair to Poor	Fair to Poor	Low	6-10 y	Co-dominant forks; one leader dead	5.5	861 Bridge Inn
621	Corymbia citriodora	Lemon-scented Gum	Early-mature	Australian native	35	42	12	4	5	8	5	Fair	Fair to Poor	Mod.B	11-20 y	Co-dominant forks	6.5	861 Bridge Inn
622	Eucalyptus leucoxylo	Yellow Gum	Early-mature	Victorian native	25	29	9	4	4	4	5	Fair	Fair to Poor	Mod.C	11-20 y		4.5	861 Bridge Inn
623	Eucalyptus mannifera	Brittle Gum	Maturing	Australian native	67@base	67	14	5	4	7	5	Fair	Fair to Poor	Mod.B	11-20 y	Codominant stems	7	861 Bridge Inn
624	Eucalyptus camaldulensis	River Red Gum	Maturing	Planted Indigenous	62	75	18	6	8	8	6	Fair	Fair to Poor	High	21-40 y	Acute forks	9	861 Bridge Inn
625	Eucalyptus viminalis	Manna Gum	Early-mature	Planted Indigenous	40	45	10	2	2	2	2	Fair to Poor	Poor	Low	6-10 y	Lost main leader	5	861 Bridge Inn
626	Eucalyptus viminalis	Manna Gum	Maturing	Planted Indigenous	58	67	14	4	4	4	4	Fair	Poor	Low	6-10 y	Acute forks;Bracket fungi;Included bark	7	861 Bridge Inn
627	Eucalyptus melliodora	Yellow Box	Semi-mature	Planted Indigenous	22	26	12	2	2	2	2	Fair	Poor	Low	6-10 y	Acute forks	6	861 Bridge Inn
628	Eucalyptus mannifera	Brittle Gum	Semi-mature	Australian native	22	28	10	3	2	3	3	Fair	Fair	Mod.C	21-40 y		5	861 Bridge Inn
629	Eucalyptus melliodora	Yellow Box	Semi-mature	Planted Indigenous	25	30	13	2	2	2	2	Fair	Fair	Mod.B	21-40 y		6.5	861 Bridge Inn
630	Eucalyptus melliodora	Yellow Box	Semi-mature	Planted Indigenous	24,20	38	13	3	3	3	2	Fair	Fair to Poor	Mod.B	21-40 y		6.5	861 Bridge Inn
631	Eucalyptus viminalis	Manna Gum	Early-mature	Planted Indigenous	32	36	12	2	2	2	3	Poor	Poor	Very Low	1-5 y	In irreversible decline;Trunk decay	6	861 Bridge Inn
632	Eucalyptus melliodora	Yellow Box	Semi-mature	Planted Indigenous	30	33	13	2	3	2	3	Fair	Fair	Mod.B	21-40 y		6.5	861 Bridge Inn
633	Eucalyptus melliodora	Yellow Box	Early-mature	Planted Indigenous	33,22	58	13	4	2	3	6	Fair	Fair	Mod.B	21-40 y		6.5	861 Bridge Inn
634	Eucalyptus cinerea	Argyle Apple	Early-mature	Australian native	55@base	55	15	3	8	5	4	Good	Fair to Poor	Mod.A	21-40 y	Codominant stems	7.5	861 Bridge Inn



635	Eucalyptus viminalis	Manna Gum	Early-mature	Planted Indigenous	21,18	55	0	1	3	1	3	Fair	Poor	Low	11-20 y	Codominant stems	2	861 Bridge Inn
636	Eucalyptus mannifera	Brittle Gum	Semi-mature	Australian native	29	34	11	4	4	2	5	Fair	Fair	Mod.B	21-40 y		5.5	861 Bridge Inn
637	Eucalyptus nicholii	Narrow-leaved Black Peppermint	Maturing	Australian native	54	63	13	3	3	5	4	Poor	Fair to Poor	Low	1-5 y	Deadwood >50mm;In irreversible decline	6.5	861 Bridge Inn
638	Eucalyptus bancroftii	Bancroft's Red Gum	Early-mature	Australian native	39	47	12	4	5	6	3	Fair	Fair	Mod.B	11-20 y		6	861 Bridge Inn
639	Eucalyptus camaldulensis	River Red Gum	Early-mature	Planted Indigenous	71@b ase	71	10	6	6	6	7	Fair to Poor	Fair to Poor	Mod.B	11-20 y	Epicormic shoots;Multi- stemmed	6.5	861 Bridge Inn
640	Eucalyptus sideroxylon	Red Ironbark	Early-mature	Australian native	31	39	14	3	4	2	5	Fair	Fair	Mod.B	11-20 y		7	861 Bridge Inn
641	Quercus robur	English Oak	Early-mature	Exotic deciduous	36	42	8	5	5	5	6	Fair	Fair	Mod.B	21-40 y	Past powerline clearance	5.5	875 Bridge Inn
642	Cupressus macrocarpa	Monterey Cypress	Maturing	Exotic conifer	36	42	14	7	5	7	7	Fair	Fair	Mod.B	21-40 y		7	875 Bridge Inn
643	Eucalyptus bicostata	Victorian Blue Gum	Maturing	Victorian native	75	100	16	7	7	7	7	Fair	Poor	Mod.C	6-10 y	Multi-stemmed	8	875 Bridge Inn
644	Eucalyptus bicostata	Victorian Blue Gum	Over-mature	Victorian native	65,20	100	16	7	7	7	7	Fair to Poor	Poor	Low	1-5 y	Borers;Main leader dead;Trunk decay;Trunk wounds	8	875 Bridge Inn
645	Quercus robur	English Oak	Maturing	Exotic deciduous	60	71	14	5	9	10	9	Fair	Fair	Mod.A	21-40 y	Deadwood >50mm	9.5	875 Bridge Inn
646	Quercus robur	English Oak	Maturing	Exotic deciduous	58	68	14	10	4	7	9	Fair	Fair	Mod.A	21-40 y	Deadwood >50mm	8	875 Bridge Inn
647	Eucalyptus camaldulensis	River Red Gum	Over-mature	Indigenous	211	200	30	10	5	16	15	Dead	Fair to Poor	Very Low	<1 y	habitat prune.	15.5	881 Bridge Inn
648	Eucalyptus camaldulensis	River Red Gum	Over-mature	Indigenous	29,21 ,11	45	14	4	4	4	6	Dead	Fair to Poor	Very Low	<1 y		7	881 Bridge Inn
649	Eucalyptus ovata	Swamp Gum	Early-mature	Planted Indigenous	31,22	37	8	6	3	0	6	Fair to Poor	Fair to Poor	Low	1-5 y		4.5	881 Bridge Inn
650	Eucalyptus aff.ovata	Swamp Gum	Early-mature	Planted Indigenous	42,15 ,11	60	12	6	5	3	6	Fair	Fair	Mod.C	11-20 y		6	881 Bridge Inn
651	Eucalyptus camaldulensis	River Red Gum	Early-mature	Planted Indigenous	32,31	48	12	5	3	2	6	Fair	Fair	Mod.C	21-40 y		6	881 Bridge Inn
652	Eucalyptus camaldulensis	River Red Gum	Semi-mature	Planted Indigenous	24	30	12	2	2	2	2	Fair to Poor	Fair to Poor	Low	6-10 y	Past stem failure	6	881 Bridge Inn
653	Eucalyptus camaldulensis	River Red Gum	Semi-mature	Planted Indigenous	24	28	10	2	2	0	4	Fair	Fair	Mod.C	21-40 y		5	881 Bridge Inn
654	Eucalyptus camaldulensis	River Red Gum	Over-mature	Planted Indigenous	34	37	14	4	4	4	4	Dead	Fair to Poor	Very Low	<1 y		7	881 Bridge Inn
655	Eucalyptus camaldulensis	River Red Gum	Over-mature	Planted Indigenous	55	63	14	6	5	6	6	Dead	Fair to Poor	Very Low	<1 y		7	881 Bridge Inn
656	Eucalyptus camaldulensis	River Red Gum	Early-mature	Indigenous	40	52	14	3	5	3	5	Fair	Fair to Poor	Mod.C	11-20 y		7	881 Bridge Inn
657	Eucalyptus camaldulensis	River Red Gum	Semi-mature	Indigenous	18	24	7	2	2	2	2	Fair	Fair	Low	21-40 y	close to powerlines	3.5	881 Bridge Inn
658	Eucalyptus bicostata	Victorian Blue Gum	Maturing	Victorian native	58,21	67	18	6	6	6	6	Fair to Poor	Fair	Mod.B	11-20 y		9	881 Bridge Inn
659	Eucalyptus bicostata	Victorian Blue Gum	Early-mature	Victorian native	31	38	12	3	3	3	3	Fair to Poor	Fair to Poor	Low	6-10 y		6	881 Bridge Inn
660	Eucalyptus bicostata	Victorian Blue Gum	Maturing	Victorian native	75	88	15	7	5	7	7	Fair	Fair	Mod.B	21-40 y		7.5	881 Bridge Inn
661	Cupressus macrocarpa	Monterey Cypress	Over-mature	Exotic conifer	55	67	9	6	7	8	6	Poor	Fair	Low	6-10 y		7	881 Bridge Inn
662	Eucalyptus rubida	Candlebark	Maturing	Planted Indigenous	80	95	18	11	7	10	7	Fair	Fair	High	>40 y	possibly remnant	9	881 Bridge

663	Fraxinus angustifolia	Desert Ash	Early-mature	Exotic deciduous	26,12	41	7	5	1	5	2	Fair	Fair	Mod.C	21-40 y	Suppressed	3.5	Inn 881 Bridge Inn
					28,16													
664	Melaleuca styphelioides	Prickly-leaved Paperbark	Maturing	Australian native	,14,1	45	8	4	4	4	4	Fair	Fair	Mod.C	21-40 y		4	881 Bridge Inn
					2													
665	XCupressocyparis leylandii	Leyland Cypress	Early-mature	Exotic conifer	25	33	10	4	4	4	4	Fair	Fair	Mod.C	21-40 y		5	881 Bridge Inn
					24,21													
666	Melaleuca styphelioides	Prickly-leaved Paperbark	Maturing	Australian native	,19,1	52	8	4	4	4	4	Fair	Fair	Mod.C	21-40 y		4	881 Bridge Inn
					8													
667	Eucalyptus bicostata	Victorian Blue Gum	Maturing	Victorian native	93	106	19	8	8	7	8	Good	Fair	Mod.A	21-40 y		9.5	881 Bridge Inn
668	Eucalyptus cladocalyx 'Nana'	Bushy Sugar Gum	Maturing	Australian native	48	56	14	7	2	5	5	Fair	Fair to Poor	Mod.C	11-20 y		7	881 Bridge Inn
669	Eucalyptus cladocalyx 'Nana'	Bushy Sugar Gum	Maturing	Australian native	26,22	36	12	4	1	6	6	Fair	Fair to Poor	Mod.C	11-20 y		6	881 Bridge Inn
670	Eucalyptus cladocalyx 'Nana'	Bushy Sugar Gum	Maturing	Australian native	31	37	7	7	1	4	5	Fair	Fair to Poor	Mod.C	11-20 y		4.5	881 Bridge Inn
671	Eucalyptus leucoxylo	Yellow Gum	Over-mature	Victorian native	22	33	5	3	2	0	4	Poor	Poor	Very Low	1-5 y		2.5	881 Bridge Inn
672	Eucalyptus leucoxylo	Yellow Gum	Maturing	Victorian native	25,9	36	7	4	2	3	4	Fair to Poor	Fair to Poor	Low	6-10 y		3.5	881 Bridge Inn
673	Eucalyptus robusta	Swamp Mahogany	Early-mature	Australian native	45	53	6	3	4	3	4	Fair	Fair to Poor	Mod.C	11-20 y	Suppressed	3.5	901 Bridge Inn
674	Eucalyptus saligna	Sydney Blue Gum	Maturing	Australian native	65	78	18	6	6	6	6	Fair	Fair	Mod.A	21-40 y		9	901 Bridge Inn
675	Eucalyptus nicholii	Narrow-leaved Black Peppermint	Maturing	Australian native	60	6	9	1	7	4	5	Fair	Poor	Low	6-10 y	Lopped	4.5	901 Bridge Inn
676	Eucalyptus botryoides	Southern Mahogany	Maturing	Victorian native	76,34	93	16	8	8	7	6	Fair	Fair	Mod.B	11-20 y	Over-extended limbs	8	901 Bridge Inn
677	Eucalyptus spathulata	Swamp Mallet	Early-mature	Australian native	36	42	11	7	2	4	5	Fair	Fair to Poor	Mod.C	11-20 y	Past powerline clearance;Previous failures	5.5	901 Bridge Inn
678	Eucalyptus saligna	Sydney Blue Gum	Maturing	Australian native	49	58	17	7	8	8	8	Fair	Fair to Poor	Mod.C	11-20 y	Basal wounds;Borers	8.5	901 Bridge Inn
679	Corymbia maculata	Spotted Gum	Early-mature	Victorian native	35	43	15	4	4	4	4	Fair	Very Poor	Very Low	1-5 y	Active split;Acute forks	7.5	901 Bridge Inn
680	Angophora costata	Smooth-barked Apple	Maturing	Australian native	37	45	11	6	6	6	6	Good	Fair	Mod.A	>40 y		6	901 Bridge Inn
681	Corymbia maculata	Spotted Gum	Maturing	Victorian native	65	79	18	6	6	6	6	Fair	Fair	Mod.A	21-40 y		9	901 Bridge Inn
682	Eucalyptus bicostata	Victorian Blue Gum	Over-mature	Australian native	92	113	17	7	4	6	5	Fair to Poor	Poor	Low	1-5 y	Declining;Main leader dead	8.5	901 Bridge Inn
683	Eucalyptus camaldulensis	River Red Gum	Early-mature	Planted Indigenous	43	52	14	4	5	5	4	Fair	Fair	Mod.B	21-40 y	Past limb failure	7	901 Bridge Inn
684	Eucalyptus camaldulensis	River Red Gum	Semi-mature	Planted Indigenous	27	34	12	1	6	4	2	Fair	Fair	Mod.C	21-40 y		6	901 Bridge Inn
685	Eucalyptus camaldulensis	River Red Gum	Early-mature	Planted Indigenous	36	46	16	3	7	3	3	Fair	Fair to Poor	Mod.C	21-40 y	Acute forks	8	901 Bridge Inn
686	Eucalyptus camaldulensis	River Red Gum	Early-mature	Planted Indigenous	31	39	15	2	3	2	4	Fair	Fair	Mod.C	21-40 y		7.5	901 Bridge Inn
687	Eucalyptus ovata	Swamp Gum	Early-mature	Planted Indigenous	21	27	14	4	4	3	4	Fair	Fair	Mod.C	21-40 y		7	901 Bridge Inn
688	Eucalyptus bicostata	Victorian Blue Gum	Over-mature	Victorian native	102	115	16	6	6	7	7	Fair to Poor	Poor	Low	1-5 y	Declining;Past stem failure;Previous failures	8	901 Bridge Inn
689	Eucalyptus bicostata	Victorian Blue Gum	Maturing	Victorian native	87	106	16	8	8	7	8	Fair	Fair to Poor	Mod.C	11-20 y	Basal wounds;Borers;Trunk	8	901 Bridge

690	Eucalyptus bicostata	Victorian Blue Gum	Early-mature	Victorian native	39	44	16	7	1	4	4	Fair	Fair	Mod.C	21-40 y	Suppressed	8	901 Bridge Inn
691	Eucalyptus mannifera	Brittle Gum	Maturing	Australian native	46	55	16	8	2	3	8	Fair	Fair	Mod.B	21-40 y		8	901 Bridge Inn
692	Eucalyptus cladocalyx 'Nana'	Bushy Sugar Gum	Maturing	Australian native	32,14	41	10	2	3	6	6	Fair	Poor	Low	6-10 y	Bracket fungi;Trunk wounds	6	901 Bridge Inn
693	Eucalyptus cladocalyx 'Nana'	Bushy Sugar Gum	Maturing	Australian native	41	48	10	5	6	5	5	Fair	Fair	Mod.C	11-20 y	Borers;Wounds	5.5	901 Bridge Inn
694	Corymbia citriodora	Lemon-scented Gum	Early-mature	Australian native	36	43	14	6	6	4	6	Fair	Fair	Mod.B	>40 y		7	901 Bridge Inn
695	Eucalyptus mannifera	Brittle Gum	Maturing	Australian native	73	84	17	6	6	6	6	Fair	Fair to Poor	Mod.B	21-40 y	Acute forks	8.5	901 Bridge Inn
696	Fraxinus excelsior 'Aurea'	European Golden Ash	Maturing	Exotic deciduous	18,18	37	8	5	5	5	5	Fair	Fair	Mod.B	21-40 y		5	901 Bridge Inn
697	Eucalyptus mannifera	Brittle Gum	Maturing	Australian native	38,34	55	9	5	5	6	6	Fair	Fair to Poor	Mod.B	11-20 y	Acute forks	6	901 Bridge Inn
698	Schinus areira	Peppercorn Tree	Early-mature	Exotic evergreen	19,18,16	38	7	5	5	5	5	Fair	Fair to Poor	Mod.C	11-20 y	Lopped	5	901 Bridge Inn
699	Melia azedarach	White Cedar	Semi-mature	Australian native	16,15,8,7	35	7	5	4	4	4	Fair	Fair to Poor	Low	11-20 y		4.5	901 Bridge Inn
700	Eucalyptus camaldulensis	River Red Gum	Maturing	Planted Indigenous	64	78	24	4	5	4	5	Fair	Fair to Poor	Mod.C	11-20 y	Past stem failure; long lever arms	12	905 Bridge Inn
					58,49													
						38,3												905 Bridge Inn
701	Casuarina glauca	Swamp She-oak	Maturing	Australian native	7,22	104	17	7	7	7	8	Fair	Fair to Poor	Mod.B	21-40 y	Multi-stemmed;Suckering	8.5	
702	Eucalyptus nicholii	Narrow-leaved Black Peppermint	Maturing	Australian native	77	86	12	8	7	7	8	Fair	Fair	Mod.B	21-40 y		7.5	905 Bridge Inn
703	Angophora costata	Smooth-barked Apple	Early-mature	Australian native	42	48	11	4	4	4	4	Fair	Fair	Mod.B	21-40 y		5.5	905 Bridge Inn
					34,22													
704	Eucalyptus sideroxylon	Red Ironbark	Early-mature	Australian native	21,1,3	75	10	5	5	5	5	Fair	Poor	Low	6-10 y	stump resprout	5	905 Bridge Inn
705	Eucalyptus nicholii	Narrow-leaved Black Peppermint	Maturing	Australian native	53	64	16	6	6	6	6	Fair	Fair	Mod.B	21-40 y		8	905 Bridge Inn
706	Eucalyptus camaldulensis	River Red Gum	Semi-mature	Planted Indigenous	29	35	12	2	2	3	4	Fair	Fair	Mod.C	21-40 y		6	905 Bridge Inn
707	Fraxinus angustifolia	Desert Ash	Maturing	Exotic deciduous	32	39	10	5	5	5	5	Fair	Fair	Mod.B	21-40 y	Woody weed sp.	5	905 Bridge Inn
708	Eucalyptus conferruminata	Bald Island Marlock	Maturing	Australian native	29,28	35	8	5	6	6	6	Fair	Fair to Poor	Mod.C	11-20 y	Previous failures;Tip dieback	6	905 Bridge Inn
709	Fraxinus angustifolia	Desert Ash	Early-mature	Exotic deciduous	27,17	39	8	5	5	5	5	Fair	Fair	Mod.C	21-40 y	Woody weed sp.	5	905 Bridge Inn
					44,33													
						20,1												905 Bridge Inn
710	Cupressus macrocarpa	Monterey Cypress	Maturing	Exotic conifer	4,12	95	13	6	7	6	6	Fair	Poor	Low	6-10 y	Congested primary union;Past stem failure	6.5	
711	Allocasuarina torulosa	Rose She-oak	Maturing	Australian native	38,12,10	47	8	4	4	4	4	Good	Fair	Mod.B	21-40 y		4	905 Bridge Inn
712	Grevillea robusta	Silky Oak	Early-mature	Australian native	18	29	8	4	4	4	4	Fair to Poor	Fair	Mod.C	11-20 y	Suppressed;Tip dieback	4	905 Bridge Inn
713	Eucalyptus camaldulensis	River Red Gum	Early-mature	Planted Indigenous	52	61	18	5	4	5	6	Fair	Fair to Poor	Mod.C	11-20 y	Past stem failure;Trunk decay;Trunk wounds	9	905 Bridge Inn
714	Eucalyptus sargentii	Salt River Gum	Maturing	Australian native	21,11	33	6	2	6	4	3	Fair	Poor	Low	1-5 y	Basal decay;Basal wounds	4	905 Bridge

715	Eucalyptus sp.	Gum Tree	Maturing	Australian native	32,12	36	9	3	5	6	5	Fair	Fair	Mod.B	21-40 y	Suppressed	5.5	905 Bridge Inn
					46,37													
716	Eucalyptus microcarpa	Grey Box	Maturing	Victorian native	,36,3	94	18	6	6	6	6	Fair	Poor	Mod.C	11-20 y	Acute forks;Codominant stems	9	905 Bridge Inn
					5													
717	Eucalyptus leucoxyton	Yellow Gum	Early-mature	Victorian native	40	5	12	4	3	3	4	Fair	Fair	Mod.B	21-40 y		6	911 Bridge Inn
718	Corymbia citriodora	Lemon-scented Gum	Semi-mature	Australian native	14	18	8	2	2	2	2	Fair	Fair	Mod.C	>40 y		4	911 Bridge Inn
719	Eucalyptus nicholii	Narrow-leaved Black Peppermint	Semi-mature	Australian native	14	16	6	2	2	2	2	Fair to Poor	Fair to Poor	Low	6-10 y		3	911 Bridge Inn
720	Eucalyptus leucoxyton	Yellow Gum	Early-mature	Victorian native	35	42	10	4	4	3	5	Fair	Fair to Poor	Mod.C	11-20 y	Acute forks	5	911 Bridge Inn
721	Eucalyptus bicostata	Victorian Blue Gum	Maturing	Victorian native	55	66	17	5	6	6	3	Fair	Fair	Mod.A	21-40 y		8.5	911 Bridge Inn
722	Eucalyptus camaldulensis	River Red Gum	Early-mature	Planted Indigenous	51	60	17	4	6	2	4	Fair	Fair	Mod.B	21-40 y	Acute forks; possibly naturally occurring. tall upright form.	8.5	911 Bridge Inn
723	Quercus robur	English Oak	Semi-mature	Exotic deciduous	14	17	7	2	3	4	3	Fair	Fair	Mod.C	>40 y		3.5	911 Bridge Inn
724	Eucalyptus camaldulensis	River Red Gum	Semi-mature	Planted Indigenous	13	15	5	3	3	3	3	Fair to Poor	Fair	Low	6-10 y	dieback	3	911 Bridge Inn
725	Eucalyptus camaldulensis	River Red Gum	Semi-mature	Planted Indigenous	10	14	5	2	2	2	2	Fair to Poor	Fair	Low	6-10 y	dieback	2.5	911 Bridge Inn
726	Acacia implexa	Lightwood	Semi-mature	Indigenous	14	16	5	2	2	2	2	Fair	Fair	Low	11-20 y		2.5	911 Bridge Inn
727	Eucalyptus scoparia	Wallangarra White Gum	Maturing	Australian native	33,24	45	12	5	5	4	5	Fair	Fair	Mod.B	21-40 y		6	911 Bridge Inn
728	Eucalyptus botryoides	Southern Mahogany	Early-mature	Victorian native	34,25	44	8	6	6	6	5	Good	Poor	Low	6-10 y	Over-extended limbs;Previous failures	6	911 Bridge Inn
729	Eucalyptus camaldulensis	River Red Gum	Early-mature	Planted Indigenous	34	41	9	3	3	3	4	Fair	Fair	Mod.C	21-40 y		4.5	911 Bridge Inn
730	Eucalyptus bicostata	Victorian Blue Gum	Maturing	Victorian native	66	75	14	7	7	7	7	Fair	Fair	Mod.A	21-40 y		7	911 Bridge Inn
					40,38													
					,37,2													911 Bridge Inn
731	Eucalyptus viminalis	Manna Gum	Maturing	Planted Indigenous	8,14	83	16	7	7	7	5	Fair to Poor	Fair	Mod.B	11-20 y		8	
732	Eucalyptus bicostata	Victorian Blue Gum	Maturing	Victorian native	58	74	16	7	6	7	7	Fair	Fair	Mod.A	21-40 y		8	911 Bridge Inn
733	Eucalyptus nicholii	Narrow-leaved Black Peppermint	Maturing	Australian native	44,43 ,32	89	16	6	7	6	7	Fair	Poor	Low	6-10 y	Acute forks;Basal wounds;Codominant stems;Past stem failure	8	911 Bridge Inn
734	Eucalyptus camaldulensis	River Red Gum	Early-mature	Planted Indigenous	49	54	16	3	4	2	4	Fair	Fair to Poor	Mod.C	11-20 y	Past stem failure;Trunk wounds	8	911 Bridge Inn
735	Eucalyptus melliodora	Yellow Box	Maturing	Planted Indigenous	48	56	14	4	8	7	7	Fair	Fair	Mod.B	21-40 y	Acute forks	7	911 Bridge Inn
736	Eucalyptus melliodora	Yellow Box	Maturing	Planted Indigenous	45	54	16	5	5	4	5	Fair	Poor	Low	6-10 y	Lopped; trunk obscured	8	911 Bridge Inn
737	Acacia implexa	Lightwood	Maturing	Indigenous	21	27	12	4	4	4	3	Fair	Fair	Mod.C	11-20 y		6	911 Bridge Inn
738	Fraxinus angustifolia	Desert Ash	Maturing	Exotic deciduous	40	48	9	6	7	7	7	Poor	Fair	Low	6-10 y	Declining	7	911 Bridge Inn
739	Eucalyptus nicholii	Narrow-leaved Black Peppermint	Maturing	Australian native	48,33	55	7	4	6	5	3	Fair	Poor	Low	6-10 y	Basal decay;Basal wounds;Lost main leader	5	911 Bridge Inn

740	Eucalyptus nicholii	Narrow-leaved Black Peppermint	Maturing	Australian native	53	60	8	6	4	5	6	Fair	Fair	Mod.B	21-40 y		5.5	911 Bridge Inn
741	Pinus radiata	Monterey Pine	Early-mature	Exotic conifer	28	34	10	4	2	1	2	Fair	Fair	Mod.C	11-20 y	Suppressed	5	911 Bridge Inn
742	Pinus radiata	Monterey Pine	Maturing	Exotic conifer	52	58	12	6	6	6	5	Fair	Fair	Mod.B	21-40 y		6	911 Bridge Inn
743	Eucalyptus sideroxylon	Red Ironbark	Maturing	Australian native	41	47	9	5	6	1	4	Fair	Poor	Low	6-10 y	Acute forks;Suppressed	5.5	911 Bridge Inn
744	Eucalyptus cladocalyx	Sugar Gum	Early-mature	Australian native	38	43	9	2	5	1	8	Poor	Fair to Poor	Low	1-5 y	Main leader dead;Suppressed	4.5	911 Bridge Inn
745	Pinus radiata	Monterey Pine	Maturing	Exotic conifer	47	54	10	4	4	4	4	Fair	Fair	Mod.B	11-20 y		5	911 Bridge Inn
746	Fraxinus angustifolia	Desert Ash	Semi-mature	Exotic deciduous	35@b ase	35	5	4	4	4	4	Fair	Fair	Low	11-20 y		4	911 Bridge Inn
747	Casuarina cunninghamiana	River She-oak	Early-mature	Australian native	40	48	6	4	4	4	5	Good	Fair to Poor	Mod.B	21-40 y	Past powerline clearance	4.5	911 Bridge Inn
748	Eucalyptus nicholii	Narrow-leaved Black Peppermint	Maturing	Australian native	48	55	8	4	2	3	4	Fair	Poor	Low	6-10 y	Basal decay;Trunk decay	4	911 Bridge Inn
749	Pinus radiata	Monterey Pine	Early-mature	Exotic conifer	40	47	13	3	3	3	3	Fair	Fair	Mod.B	21-40 y		6.5	911 Bridge Inn
750	Eucalyptus nicholii	Narrow-leaved Black Peppermint	Maturing	Australian native	44	50	9	2	2	5	3	Fair	Poor	Low	1-5 y	Lost main leader	4.5	911 Bridge Inn
751	Quercus palustris	Pin Oak	Semi-mature	Exotic deciduous	21	26	7	4	4	4	4	Fair	Fair	Mod.B	>40 y		4	911 Bridge Inn
752	Eucalyptus nicholii	Narrow-leaved Black Peppermint	Maturing	Australian native	42,35	57	10	4	5	5	5	Fair to Poor	Poor	Low	6-10 y	Deadwood;Lopped;R educed foliage density	5	911 Bridge Inn
753	Grevillea robusta	Silky Oak	Maturing	Australian native	35	41	10	5	4	4	4	Fair	Very Poor	Low	1-5 y	Lost main leader	5	911 Bridge Inn
754	Syzygium sp.	Lilly Pilly	Early-mature	Australian native	18,17	32	9	4	3	4	3	Fair	Fair to Poor	Mod.C	11-20 y	Codominant stems	4.5	911 Bridge Inn
755	Cedrus deodara	Deodar	Early-mature	Exotic conifer	41	45	15	9	6	8	7	Fair	Fair to Poor	Mod.A	21-40 y	Over extended limbs developing	7.5	911 Bridge Inn
756	Cedrus deodara	Deodar	Semi-mature	Exotic conifer	26	30	13	4	4	4	4	Fair	Fair	Mod.B	>40 y		6.5	911 Bridge Inn
757	Cedrus deodara	Deodar	Semi-mature	Exotic conifer	28	34	10	3	4	3	3	Fair	Fair	Mod.B	>40 y		5	911 Bridge Inn
758	Cupressus sp.	Cypress	Early-mature	Exotic conifer	45@b ase	45	14	4	4	4	4	Fair	Fair to Poor	Mod.C	11-20 y	Codominant stems	7	911 Bridge Inn
759	Casuarina cunninghamiana	River She-oak	Maturing	Australian native	67@b ase	67	15	8	4	4	4	Fair	Fair to Poor	Mod.B	11-20 y	tri-dominant leaders	7.5	911 Bridge Inn
760	Eucalyptus nicholii	Narrow-leaved Black Peppermint	Maturing	Australian native	52	55	10	5	5	5	3	Fair	Fair to Poor	Mod.B	11-20 y	Deadwood >50mm;Previous failures	5	911 Bridge Inn
761	Pinus radiata	Monterey Pine	Early-mature	Exotic conifer	40	44	13	3	4	3	4	Fair	Fair	Mod.B	21-40 y		6.5	911 Bridge Inn
762	Eucalyptus ovata	Swamp Gum	Semi-mature	Planted Indigenous	17	23	9	4	3	3	3	Fair	Fair	Mod.C	21-40 y		4.5	915 Bridge Inn
763	Quercus palustris	Pin Oak	Semi-mature	Exotic deciduous	20	27	7	3	3	4	4	Fair	Fair	Mod.C	21-40 y	powerlines overhead	4	945 Yan Year
764	Eucalyptus camaldulensis	River Red Gum	Early-mature	Planted Indigenous	37,37	51	9	4	4	5	4	Fair	Fair to Poor	Mod.C	21-40 y	Past powerline clearance	4.5	945 Yan Year
765	Eucalyptus bicostata	Victorian Blue Gum	Early-mature	Victorian native	38	43	9	4	4	4	4	Fair	Fair	Mod.C	21-40 y		4.5	945 Yan Year
766	Eucalyptus nicholii	Narrow-leaved Black Peppermint	Maturing	Australian native	60	68	12	5	5	6	4	Fair to Poor	Fair	Mod.B	11-20 y		6	945 Yan Year
767	Eucalyptus botryoides	Southern Mahogany	Maturing	Victorian native	67,33	79	12	7	6	6	7	Fair	Fair	Mod.B	21-40 y		6.5	945 Yan Year
		Prickly-leaved Paperbark			18,12													945 Yan Year
768	Melaleuca stypelioides		Early-mature	Australian native	0,20	55	7	3	3	4	4	Fair	Fair	Mod.C	21-40 y	Suppressed	4	

769	Eucalyptus botryoides	Southern Mahogany	Maturing	Victorian native	69	78	18	5	5	7	5	Fair	Fair	Mod.A	21-40 y		9	945 Yan Yean
770	Eucalyptus nicholii	Narrow-leaved Black Peppermint	Maturing	Australian native	56	63	13	5	4	3	4	Fair	Fair	Mod.B	21-40 y	Acute forks	6.5	945 Yan Yean
771	Quercus coccinea	Scarlet Oak	Semi-mature	Exotic deciduous	32	38	6	3	3	4	4	Fair	Fair	Mod.C	>40 y		4	945 Yan Yean
					16,14													945 Yan Yean
					,12,1													945 Yan Yean
772	Melaleuca linariifolia	Snow in Summer	Maturing	Australian native	2,12	72	6	4	4	4	4	Fair	Fair	Mod.B	21-40 y		4	
773	Ulmus procera	English Elm	Over-mature	Exotic deciduous	107	123	18	7	6	6	8	Fair to Poor	Poor	Low	1-5 y	Basal decay;Basal wounds;Cavity;Dead wood >50mm;Decay;Previous failures;Suckering	9	945 Yan Yean
774	Eucalyptus pulchella	White Peppermint	Maturing	Australian native	71	78	16	6	6	6	6	Fair	Fair	Mod.B	21-40 y		8	945 Yan Yean
775	Eucalyptus sp.	Gum Tree	Semi-mature	Australian native	6,6,6,6,6	35	5	2	2	2	2	Good	Poor	Very Low	1-5 y	stump resprout	2.5	945 Yan Yean
776	Eucalyptus sp.	Gum Tree	Semi-mature	Australian native	7,7,7,7	35	5	2	2	2	2	Good	Poor	Very Low	1-5 y	stump resprout	2.5	945 Yan Yean
777	Grevillea robusta	Silky Oak	Early-mature	Australian native	30	34	9	3	3	3	3	Fair to Poor	Fair to Poor	Low	6-10 y	Lost main leader;Tip dieback	4.5	945 Yan Yean
778	Fraxinus angustifolia	Desert Ash	Early-mature	Exotic deciduous	30	35	8	1	4	3	3	Fair to Poor	Fair to Poor	Low	11-20 y	Suppressed	4	945 Yan Yean
779	Eucalyptus polyanthemos	Red Box	Early-mature	Planted Indigenous	58	68	13	6	7	6	7	Fair	Fair	Mod.A	>40 y		6.5	reserve
780	Acacia baileyana	Cootamundra Wattle	Over-mature	Australian native	16,12	55	6	3	3	3	5	Fair	Fair to Poor	Low	6-10 y		4	reserve
781	Acacia mearnsii	Late Black Wattle	Over-mature	Victorian native	40	49	5	5	5	5	5	Fair to Poor	Poor	Low	1-5 y		5	reserve
782	Acacia mearnsii	Late Black Wattle	Over-mature	Victorian native	40	49	5	5	5	5	5	Fair	Poor	Low	1-5 y		5	reserve
783	Melaleuca linariifolia	Snow in Summer	Over-mature	Australian native	22,20,18,18	49	5	3	3	3	3	Fair	Fair	Mod.C	21-40 y		3	reserve
784	Melaleuca armillaris	Bracelet Honey- myrtle	Over-mature	Victorian native	40,35,35,30	85	5	5	5	5	5	Fair	Poor	Low	1-5 y		5	reserve