

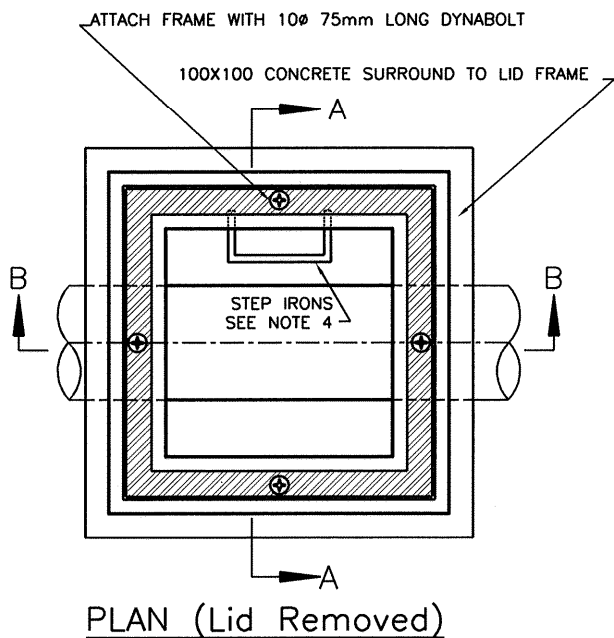
TABLE 1: EASEMENT PIT – MINIMUM INTERNAL SIZE ACCORDING TO PIT DEPTH (SEE NOTE 1)

DEPTH	PIT SIZE	FRAME SIZE
<900	600 x 600	825 x 825
900-1200	750 x 750	825* x 900
≥1200	900 x 900	1070 x 1070

* FIX BOLTS THIS SIDE TO ACHIEVE MIN EDGE DIST.

TABLE 2: JUNCTION PIT IN ROAD RESERVE MINIMUM INTERNAL PIT SIZE ACCORDING TO PIT DEPTH (SEE NOTE 1)

DEPTH	PIT SIZE	FRAME SIZE
ALL	600 x 900	800 x 1100



NOTES

- Pit base to be haunched where $\phi\text{Pipe} + 100 > \text{Min Pit Size}$. Refer VicRoads SD1001 – SD1023.
- Pipe centreline to be $\frac{1}{2} \phi\text{pipe} + 150$ behind B.O.K.
- Pit walls and floor:
 - 150 thick for depth to 1800 & $\phi 450$
 - 200 thick for depth > 1800 or $\phi 450$.
- Pits > 900 depth to be supplied with step irons – refer to VicRoads SD1041.
- Subject to superintendent's approval precast pits may be substituted.
- Surrounding ground within 500mm to be shaped to meet top of pit lid
- For grated pits, galvanised lid in accordance with AS3996



City of Whittlesea

JUNCTION PIT

SD 203

APPROVED

[Signature]

DATE 13/10/2005

REV C