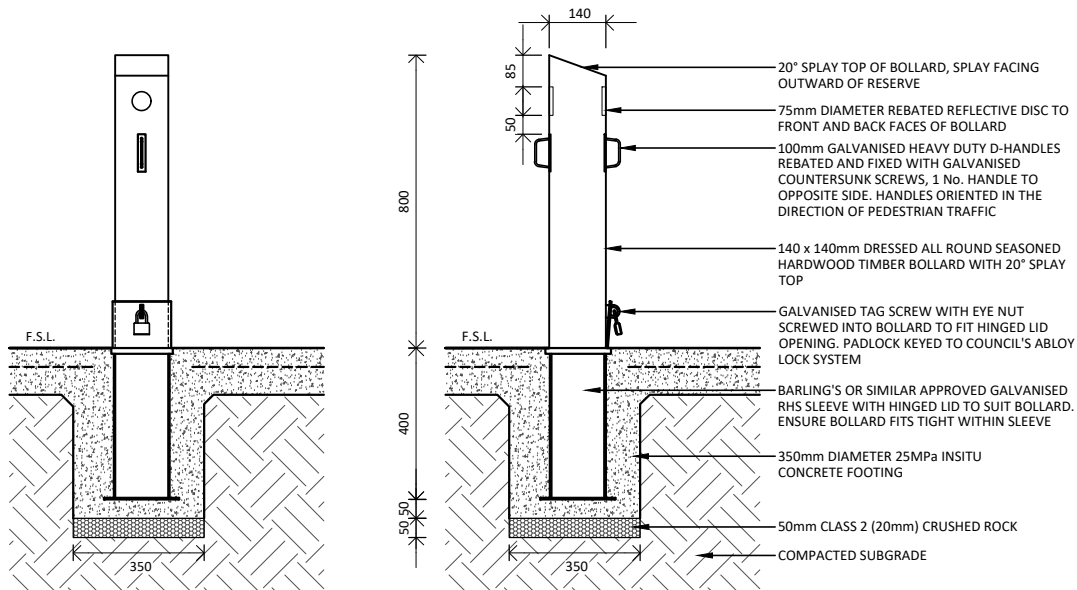
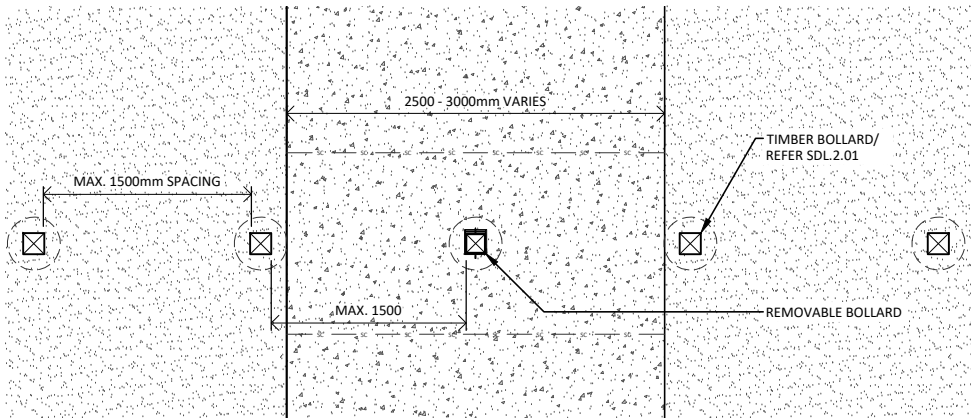


QUICK SPECIFICATION

APPLICATION OR TYPICAL LOCATION:	ALL SHARED PATH ENTRIES INTO PARKS AND RESERVES. TO BE CONFIRMED WITH COUNCIL REPRESENTATIVE
PRODUCT:	140 x 140mm TIMBER BOLLARD
SUPPLIER:	CONTRACTOR TO NOMINATE
MATERIAL AND FINISH:	DRESSED ALL ROUND SEASONED HARDWOOD TIMBER OR WHITE CYPRESS PINE, NATURAL DURABILITY CLASS 2 OR BETTER 2 COATS MINIMUM OF NATURAL LANOLIN OIL ALL FIXINGS TO BE GALVANISED STEEL
FIXING / FOOTING:	REMOVABLE SLEEVE INGROUND CONCRETE FOOTING, AS DETAILED. REMOVABLE BOLLARDS MUST BE FITTED WITH COUNCIL ABLOY PADLOCKS KEYED ALIKE. REMOVABLE BOLLARDS MUST BE OF A CONTRASTING COLOUR TO THE SURROUNDING FINISHED GROUND SURFACE AND BE FITTED WITH A 75mm DIAMETER REBATED REFLECTIVE DISC.
ADDITIONAL OPTIONS:	SECURAPOST ROUND BOLLARD SUPPLIED BY LEDA SECURITY. KEYED TO COUNCILS ABLOY LOCK SYSTEM.
AUSTRALIAN STANDARDS:	AS 1428.1 DESIGN FOR ACCESS AND MOBILITY AS 1684 RESIDENTIAL TIMBER FRAMING CONSTRUCTION
STANDARD DRAWING CROSS REFERENCES:	SDL.2.01 - TIMBER BOLLARD



01 REMOVABLE BOLLARD - SECTION
SCALE: 1:20 @ A4



02 REMOVABLE BOLLARD - PLAN
SCALE: 1:50 @ A4

Drawn	HK
Checked	AC, AN
Approved	JG
Date	JUNE 2023



STANDARD DETAIL
LANDSCAPE CONSTRUCTION DETAIL
REMOVABLE BOLLARD DETAIL

DWG NO.
SDL.2.02

REVISION_A