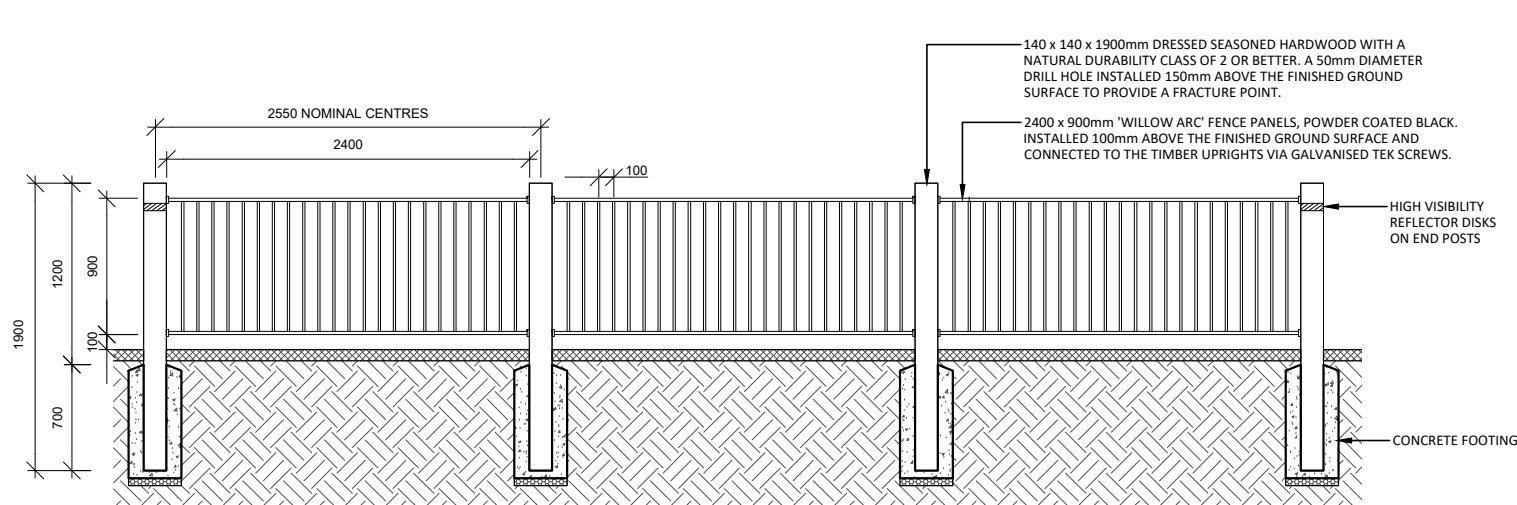
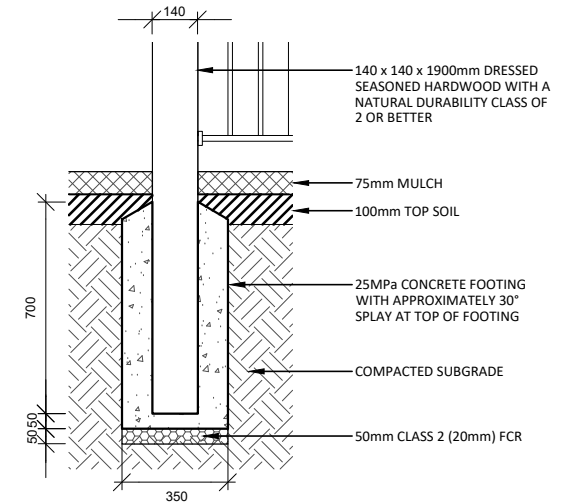


QUICK SPECIFICATION

APPLICATION OR TYPICAL LOCATION:	TO BE CONFIRMED WITH COUNCIL REPRESENTATIVE
PRODUCT:	900mm HIGH 'WILLOW ARC' FENCE
SUPPLIER:	CONTRACTOR TO NOMINATE
MATERIAL AND FINISH:	POSTS: 140 x 140 x 1900mm DRESSED ALL ROUND SEASONED HARDWOOD TIMBER OR WHITE CYPRESS PINE, NATURAL DURABILITY CLASS 2 OR BETTER PANELS: 2400 x 900mm 'WILLOW ARC' FENCE PANELS, POWDER COATED BLACK. INSTALLED 100mm ABOVE THE FINISHED GROUND SURFACE AND CONNECTED TO THE TIMBER UPRIGHTS VIA GALVANISED TEK SCREWS.
FIXING / FOOTING:	INGROUND CONCRETE FOOTING
ADDITIONAL OPTIONS:	NOT APPLICABLE
AUSTRALIAN STANDARDS:	
STANDARD DRAWING CROSS REFERENCES:	



01 DIRECTIONAL FENCING - SECTION
SCALE: 1:50 @ A4



02 CONCRETE FOOTING - SECTION
SCALE: 1:25 @ A4



STANDARD DETAIL
LANDSCAPE CONSTRUCTION DETAIL
DIRECTIONAL FENCING DETAIL

DWG NO.
SDL.2.13

REVISION_A

Drawn	HK
Checked	AC, AN
Approved	JG
Date	JUNE 2023