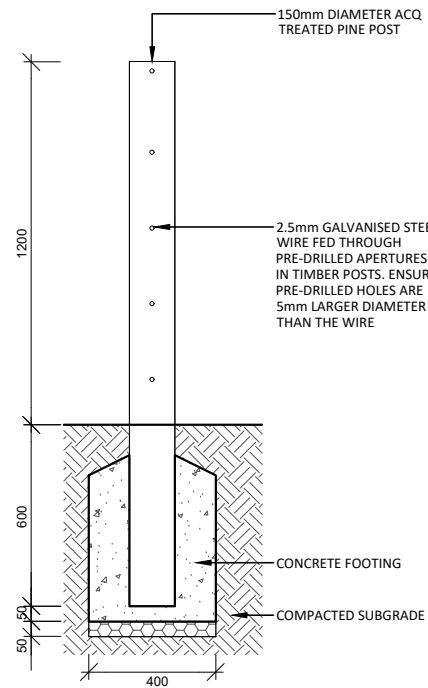


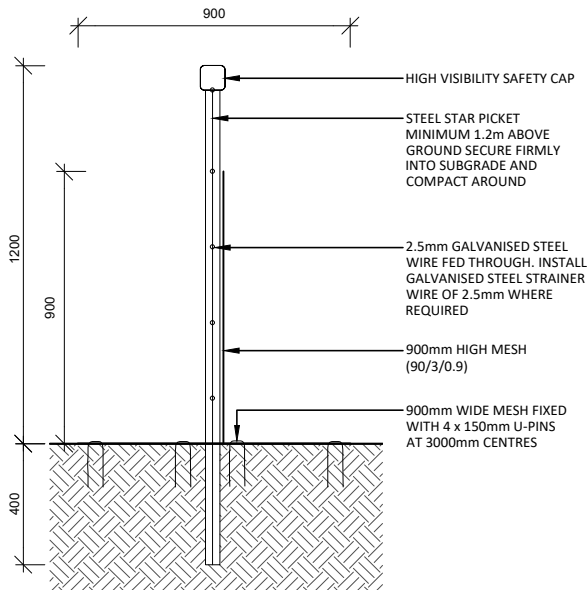
QUICK SPECIFICATION

APPLICATION OR TYPICAL LOCATION:	TO BE CONFIRMED WITH COUNCIL REPRESENTATIVE
PRODUCT:	1200mm HIGH WIRE FENCE WITH RABBIT PROOF SKIRT
SUPPLIER:	CONTRACTOR TO NOMINATE
MATERIAL AND FINISH:	POSTS: 150mm ACQ TREATED PINE POST PICKETS: STEEL STAR PICKET FENCING: HOT DIPPED GALVANISED HIGH TENSILE FENCING WIRE HIGH MESH
FIXING / FOOTING:	INGROUND CONCRETE FOOTING
ADDITIONAL OPTIONS:	NOT APPLICABLE
AUSTRALIAN STANDARDS:	
STANDARD DRAWING CROSS REFERENCES:	

01 PLAIN WIRE FENCE WITH RABBIT PROOF SKIRT - SECTION
SCALE: 1:75 @A4

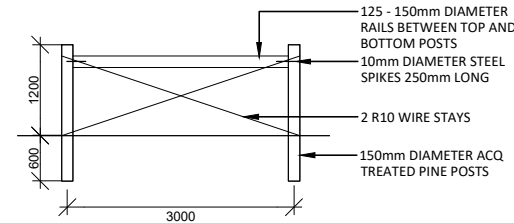


02 POST - SECTION
SCALE: 1:100 @A4

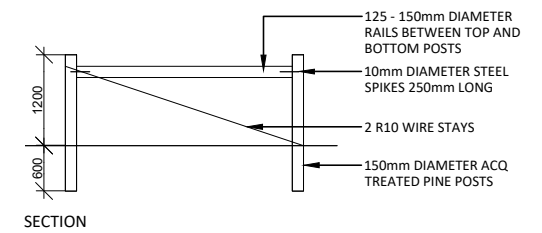
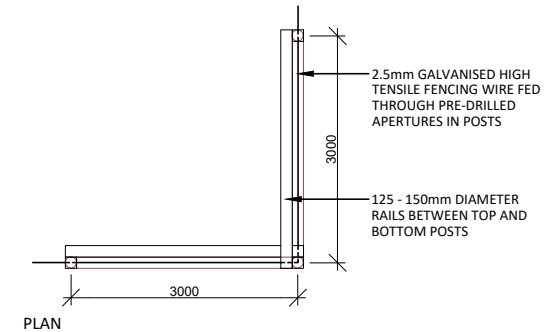


03 STEEL STAR PICKET WITH MESH SKIRT AND BASE - SECTION
SCALE: 1:100 @A4

REQUIRED AT 200m CENTRES,
GATE OPENINGS AND END POSTS



04 STRAINING POST ASSEMBLY - SECTION
SCALE: 1:100 @A4



05 STRAINING CORNER POST ASSEMBLY
SCALE: 1:100 @A4



STANDARD DETAIL
LANDSCAPE CONSTRUCTION DETAIL

PLAIN WIRE FENCE WITH RABBIT PROOF SKIRT DETAIL

DWG NO.

SDL.2.14

REVISION_A

Drawn	HK
Checked	AC, AN
Approved	JG
Date	JUNE 2023