



This Conservation Reserve has been set aside to enhance and maintain local flora, fauna and ecological values. This will be achieved through the control of pest animals and high threat weeds, ecological burning, revegetation, and increased public education. The area provides a place for local residents to explore and enjoy this example of the natural landscapes that existed in the area prior to the current residential development.

About

Epping North Conservation Reserve

Epping North Conservation Reserve

Chigwell Place
Epping North
Melways Map 182 A4



A Natural Heritage trail with historic places and points of interest, local flora, fauna and ecological values.

Suitable for all active families and pleasure walkers, please note dogs are not permitted.

Walking Difficulty – Easy flat levels

Accessibility – Excellent; boardwalks, concrete and gravel paths

Parking – Northfields Street, Epping

Photography: Tim Connell OpenId-122 David Francis



Further Information
Parks & Open Space
City of Whittlesea
Tel: (03) 9401 0524
www.whittlesea.vic.gov.au

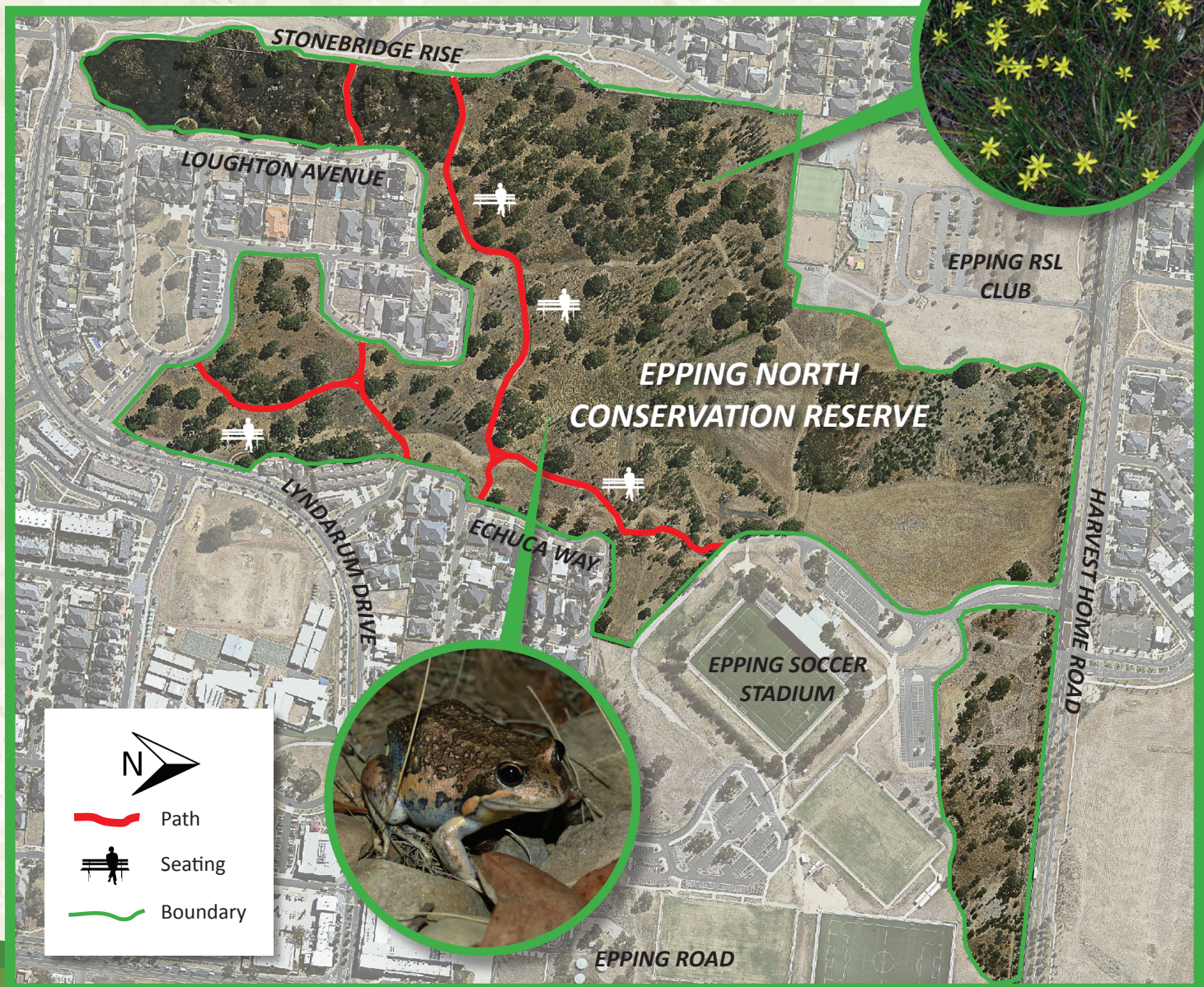


The City of Whittlesea Bushland team aim to enhance and protect the reserve through:

- Protection of existing flora
- Planting new and diverse species of local flora
- Weed management
- Stormwater management
- Fauna habitat improvements
- pest and domestic animal control
- Maintaining secure access
- Community education

The Epping North Conservation Reserve supports a remnant stand of River Red Gums with scattered Yellow Box and Swamp Gum. There are basalt stony knolls supporting an array of native wildflowers and indigenous aquatic plants through the drainage lines.

This creates important habitat for reptiles, mammals and frogs including the endangered Growling Grass Frog.



What to See and Do.....

- Walk the shared trail and enjoy the serenity.
- View the dry stone walls that are iconic to the area. They date back to former land practices and were used to define property boundaries.
- Listen to the local birds.
- Look out for animals utilising the hollows in the mature River Red Gums.
- Look for wild flowers upon the stony knoll shrub land including the nationally endangered Matted

Flax Lily (*Dianella amoena*) and the rare Tall Vanilla-lily (*Arthropodium sp.*)

- Look and listen for frogs, wetland birds and other small wildlife around the low-lying swampy spots.
- Please be aware that snakes may be encountered when entering this open space.
- Entry to Epping North Conservation Reserve is prohibited on total fire ban days.
- Dogs are not permitted on or off the leash.