



# Environmental Sustainability Strategy 2012-2022

Final progress summary

# Background

The *Environmental Sustainability Strategy 2012-2022* was adopted by Council on 7 May 2013.

It set out 206 actions prioritised over ten years to achieve the strategic objectives and community's vision to live sustainably in the urban and rural areas of the municipality and, ensure that our carbon footprint, water, waste, energy use, flora and fauna are managed sustainably.

It included 57 short-term actions, 10 short- to medium-term actions, 12 medium-term actions, four long-term actions and 123 ongoing actions.

This is the second and final progress report on the *Environmental Sustainability Strategy 2012-2022* and outlines progress against the actions, highlighting the key achievements and next steps for the City of Whittlesea's contribution toward securing a sustainable, net zero emissions and climate resilient future.

In summary, the 2022 reporting shows tremendous achievement with all but one of the 206 actions commenced. The successful implementation of the *Environmental Sustainability Strategy 2012-2022* reflects the deeply collaborative and committed approach across various Council departments in implementing the Strategy.

## Seven priority areas



**Water**



**Land**



**Climate Change**



**Biodiversity**



**Urban development and the built environment**



**Waste management and resource recovery**



**Change strategies**

# Summary of progress on actions

## Actions complete

### Short-term actions – 98% complete

- Of the 57 short-term actions, 56 are complete (98%) and one was not started (2%).
- The one remaining short-term action that was never started was action L1.5.

### Short-Medium-term actions – 100% complete

- All 10 short-medium-term actions are complete and were completed by 2015/2016.

### Medium-term actions – 100% complete

- All 12 medium-term actions are complete and 10 (83%) were completed by 2020/2021.

### Long-term actions – 100% complete

- All four long-term actions are complete.

### Ongoing actions – 98% complete

- All 123 ongoing actions are operational and continue to be supported across Council as part of day-to-day business operations. Many of these actions are now considered business as usual.
- The two ongoing actions marked as having delays or minor issues (2%) were W4.2 and CS3.4.

## Actions not complete

Of the remaining three actions (2%), all have commenced to some degree but are yet to be completed, including two ongoing actions and one short-term action. These actions are actively being worked on by Council and will be progressed as part of the implementation of the *Biodiversity Strategy 2019-2029*, the *Whittlesea Water For All Strategy 2020-2030* and the *Sustainable Environment Strategy 2022-2032*.

### Action L1.5

Review the lease arrangements of Council owned rural land based on an assessment of the biodiversity value of the land, with a view to determining its ongoing retention.

This will now be undertaken as part of the *Sustainable Environment Strategy Action Plan 2022-2024* (Biodiversity Action Plan).

Since the original *Environmental Sustainability Strategy 2012-2022* actions, four of the existing rural parcels with high biodiversity values have been actively managed under Council's Conservation Services Contract, however lease arrangements have not been reviewed. A review of these is scheduled for 2023-24.

### Action W4.2

Provide annual end of financial year water use reports to track progress towards the corporate water conservation goals.

Whilst the 2016 Environmental Indicators Report reported on water costs and usage from 2013/2014 – 2015/2016, further reporting has not been undertaken.

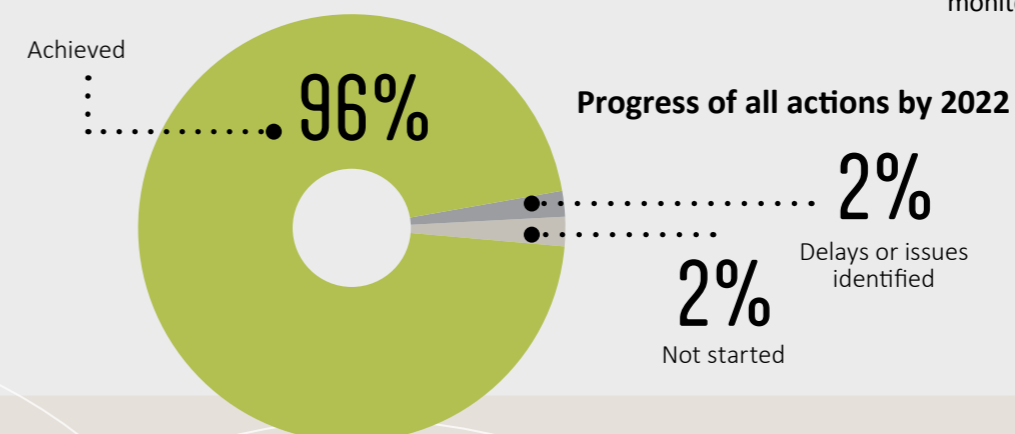
This action was superseded by the integrated water management plan, *Whittlesea Water For All Strategy 2020-2030*, which will include a monitoring program.

Due to system issues and resources, this has not yet commenced.

### Action CS3.4

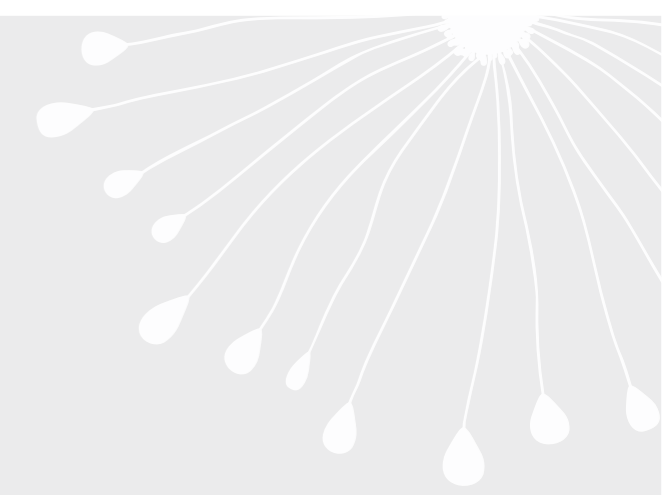
Every two years prepare an 'environment indicators report' which details progress against the indicators listed in this strategy and associated key achievements. The report will be available to the community and will assist Council in assessing whether this Strategy is meeting its stated goals.

This action was only partially completed. Although the first Environmental Indicators Report was completed in 2017, subsequent reports did not transpire due to major organisational changes in process, reporting, structure, systems, and leadership. The Integrated Planning Framework and the recently adopted *Sustainable Environment Strategy 2022-2032* include several indicators to monitor progress into the future.





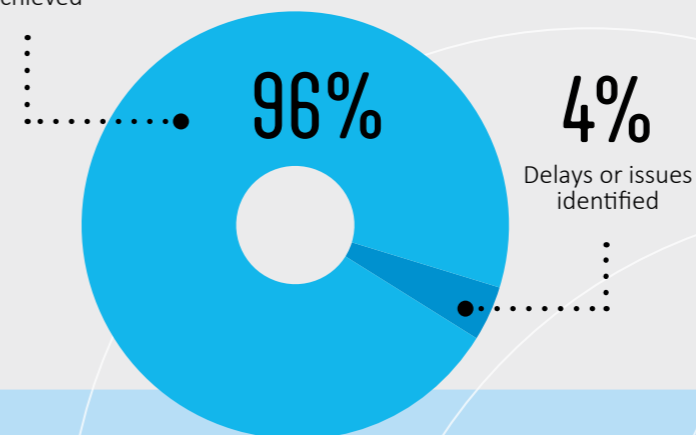
# Priority area 1 Water



## Key achievements

- Construction of the Melbourne Markets Stormwater Harvesting Project which is estimated to save more than 48 million litres of drinking water every year
- Installed alternative water supplies for 11 per cent of the public open space in the City of Whittlesea, using a mix of recycled water and stormwater
- Management of more than 1,000 assets (small and large-scale) that deal with stormwater pollution, most of which are inherited from developers
- Built systems to reduce stormwater pollution in some locations, such as the wetland and stormwater harvesting system adjacent to Melbourne Markets in Epping
- Introduced the Integrated Water Cycle Management local planning policy to ensure new developments requiring a planning permit incorporate Water Sensitive Urban Design (WSUD) techniques and to encourage opportunities for broader integrated water management outcomes. This was integrated into Clause 19.03-3L of the Whittlesea Planning Scheme
- Worked with Melbourne Water to understand flood risk across the City of Whittlesea and to identify areas at risk of flooding. Flood modelling was completed for Plenty River, Darebin Creek and Edgars Creek catchments
- Worked with various external stakeholders on the Upper Merri Creek sub-catchment integrated water management plan, and the Upper Merri Regional Parklands project
- Created the Integrated Water Management hub
- Created and recruited an Integrated Water Management Lead role
- Successfully applied for a grant to fund a WSUD Officer role for education and compliance
- Created a Waterbody Assessment role to assist the renovation of Council's water assets registration and documentation
- Undertook interdepartmental staff upskilling in water quality software use for development compliance as well as internal design purposes
- Established a Community of Practice for water practitioners to share knowledge and work together to improve processes and find innovative solutions.

### Water actions Achieved



# Priority area 1

## Water



Action number and description	Department	Priority	Status
<p>W1.1 Utilise the full range of planning and development tools to conserve water resources and protect waterways and catchments, including:</p> <ul style="list-style-type: none"> <li>• Municipal Strategic Statement (under review)</li> <li>• Framework and Precinct Structure Planning</li> <li>• Local Structure Plans</li> <li>• Development Plans</li> <li>• Planning Permits.</li> </ul>	Established Area Planning; Strategic Planning and Design; Growth Area Development Assessment	Ongoing	Achieved
W1.2 Strengthen policies and controls relating to new dams in rural areas so that stream flows in local waterways can be maintained and enhanced.	Sustainability Planning	Short	Achieved
W1.3 Develop policy and guidelines within the local planning framework to manage the construction of farm dams to protect stream flow in local waterways.	Sustainability Planning	Short	Achieved
W1.4 Implement the Stormwater Management Plan 2012 – 2015.	Environmental Operations	Short	Achieved
W1.5 Extend best practice water sensitive urban design to cover development of non-residential land uses including mixed use, industrial and commercial.	Environmental Operations	Short	Achieved
W1.6 Apply best practice water sensitive urban design to Council's own assets, new and existing.	Development Engineering; Major Projects; Engineering and Transportation	Short	Achieved
W1.7 Where possible, apply best practice water sensitive urban design to existing civil infrastructure, wetlands and waterways of established areas within the City of Whittlesea, including those owned by Council, to improve water quality and aquatic ecology.	Development Engineering; Major Projects	Short	Achieved
W1.8 Develop cross-directorate and departmental capacities to integrate the specification, approval and inspection, and maintenance of, Water Sensitive Urban Design systems as required by the Planning Scheme.	Development Engineering; Environmental Operations	Ongoing	Achieved
W2.1 Continue to be an active member and funder of the Merri Creek Management Committee and Darebin Creek Management Committee.	Sustainability Planning	Ongoing	Achieved
W2.2 Develop and maintain active productive working relationships with federal and state government departments, public authorities such as Melbourne Water, Yarra Valley Water, Southern Rural Water, the Environment Protection Authority, Growth Areas Authority and catchment management authorities, to coordinate the sustainable development and protection of waters and catchments, and water conservation and use.	Sustainability Planning	Ongoing	Achieved

# Priority area 1

## Water



Action number and description	Department	Priority	Status
<p>W2.3 Work in partnership with other agencies so that base and environmental flows, stream bank conditions and water quality in local waterways are sufficient to sustain the biodiversity and other environmental, social and economic values of these waterways in the City of Whittlesea:</p> <ul style="list-style-type: none"> <li>• Plenty River (including Barbers, Bruces, and Scrubby Creeks)</li> <li>• Merri Creek (including Curly Sedge, Edgars, and Central Creeks)</li> <li>• Darebin Creek (including Findon and Hendersons Creek).</li> </ul>	Parks and Open Space	Ongoing	Achieved
W2.4 Develop effective partnerships with water and other public authorities, in order to support businesses to be more water efficient, and to use alternative water resources.	Economic Development	Ongoing	Achieved
W3.1 Support residents and landlords to continue to be more water efficient in their homes, through effective community engagement, outreach programs, education and information provision.	Sustainability Planning	Short	Achieved
W3.2 Support businesses to continue to be more water efficient through effective community engagement, outreach programs, education and information provision; and, through business development support, facilitation, investment and marketing opportunities.	Sustainability Planning	Ongoing	Achieved
W3.3 Develop innovative models for the housing and commercial development industry to implement integrated water conservation, and waterway and catchment protection, into new housing estates.	Sustainability Planning	Short	Achieved
W3.4 Develop and maintain productive, collaborative, professional relationships with private developers.	Strategic Planning and Design	Ongoing	Achieved
W3.5 Advocate for the provision of state and federal grants to support residents, businesses and farmers to reduce water consumption, and utilise alternative water sources.	Sustainability Planning	Ongoing	Achieved
W3.6 Continue to be an active member, supporter, and funder, of local community water conservation and waterway protection groups, including Waterwatch.	Environmental Operations	Ongoing	Achieved
W4.1 Review the Sustainable Water Use Plan (2006), and prepare a new plan (which is reviewed on a five yearly basis) to ensure the continuation of water use reduction and conservation activities.	Sustainability Planning	Short	Achieved
W4.2 Provide annual end of financial year water use reports to track progress towards the corporate water conservation goals.	Sustainability Planning	Ongoing	Delays or Issues Identified
W4.3 Continue to explore alternative water source opportunities for Council's high water use sites.	Parks and Open Space	Ongoing	Achieved
W5.1 Amend the strategic planning, and infrastructure and asset provision tools and processes, such that they will anticipate the water-related effects of climate change including decreased water availability, less overall rainfall, more intense rainfall events, more frequent and intense bushfires, and decreased soil moisture.	Development Engineering	Short	Achieved
W5.2 Ensure that Council alternative water supply projects be energy efficient and additional greenhouse gas emissions are off-set using equal and verified abatements.	Environmental Operations	Ongoing	Achieved



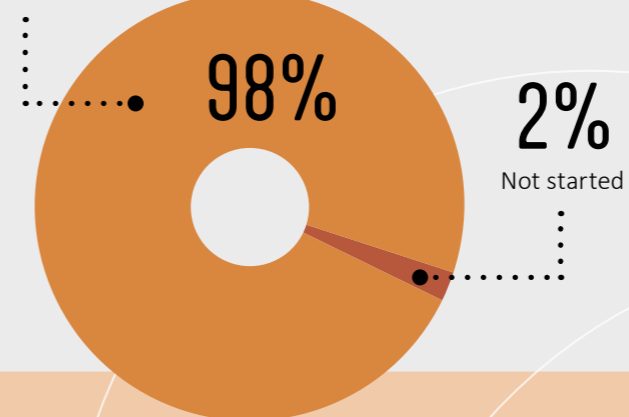
## Priority area 2 Land

### Key achievements

- Management of approximately 520 ha of conservation reserve with an adaptive management approach
- Implementation and regular update of the Whittlesea Planning Scheme to protect environmental and sustainability values
- Implementation of the Sustainable Land Management Rebate Scheme and the Environmental Works Grants Program to provide financial support for rural landowners (each year approximately 150 rural landowners have taken part)
- Successful implementation of the City's Green Wedge Management Plan 2011-2021, with all but five of the 84 priority actions identified in the document being in progress or completed
- Two new dedicated officer resources to help safeguard the diverse values of our Green Wedge being the permanent appointment of an Agribusiness Officer and an Environmental Protection Officer
- Appointment of a Landcare Officer funded by DELWP/ DEECA to support the activities of existing Landcare and friends of groups and support the creation of new Landcare and friends of groups
- New Lalor Landcare Group supported during its formation in 2022
- Continued biodiversity monitoring at key sites including Quarry Hills Parkland, Growling Frog Golf Course
- Implementation of Pest Plant Education and Compliance program to achieve landscape scale control of priority weed species
- Implementation of the Pest Animal Management program in 2019-2021
- Cat curfew and mandatory desexing was endorsed by Council in July 2022, with an impending implementation date of 1 August 2023
- Implementation of the increased differential farm rate of 40 per cent to better support agribusiness from 2017
- Partnership between Council and Deakin University to produce a Land Capability Assessment report that was disseminated to the wider community and investigated the potential of regenerative agriculture in enhancing climate resilience in the peri-urban space
- Supported the establishment of the Whittlesea Community Food and Farm Collective which will develop a hub that will grow food, use recycled water, incorporate sustainable land management practices and circular economy systems and provide training and employment opportunities in agriculture, horticulture, conservation and revegetation
- Planned trails within the Green Wedge such as the Whittlesea Rail Trail from Mernda Station to connect to Whittlesea township, and the Plenty River Trail from the M80 Ring Road to Bridge Inn Road
- Preparation, adoption and implementation of the Quarry Hills Parkland Master Plan
- Since 2012, Council has doubled the size of the Quarry Hills Regional Park and planted over 20,000 trees at the site
- Completion of the Cultural Heritage Strategy that identifies and protects heritage places across the municipality.

#### Change strategies actions

Achieved



## Priority area 2 Land



Action number and description	Department	Priority	Status
L1.1 Review the City's Open Space Strategy 1997 to facilitate improved strategic planning for open space provision across the municipality. The Open Space Strategy is intended to provide a guiding framework for Council to undertake the future planning, provision, development and maintenance of its integrated open space system and to ensure that it meets the needs of our diverse community and the environment.  The Strategy will be updated every 5 and 10 years to ensure it reflects current trends and is responsive to community needs and aspirations. Implementation progress will be reported periodically to Council and the community. Refer to B3.1 for related strategy.	Parks and Open Space	Short	Achieved
L1.2 Continue to develop and implement management plans for Council reserves based on adaptive management techniques and best practice.	Parks and Open Space	Ongoing	Achieved
L1.3 Identify Council operations that have the potential to contribute to land degradation or the spread of pest plants and animals. Incorporate new measures, processes or protocols to achieve best management practices and minimise environmental impacts.	Infrastructure Maintenance	Ongoing	Achieved
L1.4 Continue to build Council staff and contractor skills and knowledge of best practices in land and vegetation management. Introduce annual training programs and professional development opportunities to ensure staff and contractors regularly update skills and knowledge.	Infrastructure Maintenance; Parks and Open Space	Ongoing	Achieved
L1.5 Review the lease arrangements of Council owned rural land based on an assessment of the biodiversity value of the land, with a view to determining its ongoing retention.	Parks and Open Space	Short	Not Started
L1.6 Actively manage Council owned rural land (that is retained under L1.5) to ensure that the health and biodiversity values are maintained and enhanced over time.	Parks and Open Space	Short	Achieved
L1.7 Investigate the feasibility of establishing a 'land management best practice' demonstration site on a Council rural reserve to be utilised in community training and education programs. Explore funding opportunities and partnerships to support the implementation of this initiative.	Sustainability Planning	Long	Achieved
L1.8 Encourage and facilitate cooperation and coordination of land management activities between Council owned land and adjacent landowners to maximise the success of land management efforts.	Parks and Open Space	Ongoing	Achieved
L1.9 Develop and implement site specific weed management plans that provide a strategic approach to the management of priority weed species across Council owned and managed land.	Parks and Open Space	Ongoing	Achieved
L2.1 Provide increased opportunities in annual works programs which facilitate a greater level of community participation and involvement in the management of Council reserves.  Refer to Biodiversity theme, for related strategies and approaches (e.g., B4.2).	Parks and Open Space	Ongoing	Achieved
L2.2 Continue to effectively consult and engage with the community in the planning, design and development of landscape plans for Council reserves.	Parks and Open Space	Ongoing	Achieved

## Priority area 2 Land



Action number and description	Department	Priority	Status
L2.3 Raise community awareness of the benefits of investing in land rehabilitation works by providing educative signage at high profile and high use sites.	Parks and Open Space	Ongoing	Achieved
L3.1 Review of the Whittlesea Planning Scheme to improve and strengthen local planning mechanisms and policies which aim to protect and improve land health and productivity.	Strategic Planning and Design	Ongoing	Achieved
L3.2 Implement and periodically review the City's Green Wedge Management Plan 2011-2021. Refer to B2.2 for further detail.	Strategic Planning and Design	Ongoing	Achieved
L3.3 Facilitate the long-term protection of land health and productivity through the consistent application of agreed standard planning permit conditions which address key land management issues. Ensure that these are applied consistently and reviewed periodically to ensure long-term effectiveness.	Established Areas Planning	Ongoing	Achieved
L3.4 Continue to require Land Management Plans as part of rural planning permit requirements and pro-actively monitor compliance. The purpose of these Plans is to ensure minimal environmental impact resulting from land use change, to improve land health and productivity over time, and to help local landholders fulfil their long-term aspirations for their properties.	Sustainability Planning	Ongoing	Achieved
L3.5 Establish a landscape approach to land management across the municipality by utilising endorsed Land Management Plans and other reliable data sources as a means of mapping key priorities and activities across the municipality.	Sustainability Planning	Medium	Achieved
L3.6 Establish effective incentives and support mechanisms to assist landowners to implement Land Management Plans.	Sustainability Planning	Ongoing	Achieved
L3.7 Actively monitor compliance with the Whittlesea Planning Scheme and planning permit conditions in rural areas with a particular focus on protecting biodiversity, land health and productivity. This will be achieved by applying improved and consistent processes and protocols for rural investigations and compliance, and by establishing an effective tracking system to monitor compliance with permit conditions and any related breaches of the Planning Scheme.	Sustainability Planning	Short	Achieved
L3.8 Implement pro-active environmental planning education and compliance programs annually in the rural and urban fringe areas, prioritising the issue of illegal filling in the first few years. Ensure that programs include an active monitoring component and is evaluated for long term effectiveness.	Sustainability Planning	Short	Achieved
L3.9 Work in partnership with neighbouring councils to address common environmental compliance issues. Investigate the feasibility of establishing a regional working group on this topic to share information and resources, and to develop a consistent approach to addressing common issues.	Sustainability Planning	Short	Achieved
L3.10 Develop and implement a 5-year action plan which facilitates compliance with the City of Whittlesea Pest Plant Local Law (Clause 5.6). The action plan will identify priority areas for targeted education and local law compliance, associated monitoring and tracking processes, and methods to evaluate the long-term impact of the program.	Sustainability Planning	Medium	Achieved

## Priority area 2 Land



Action number and description	Department	Priority	Status
L3.11 Continue to undertake mapping of weed infestations annually in rural areas to assist in monitoring the number of properties impacted by target weeds and in determining priority areas for education and compliance.	Sustainability Planning	Ongoing	Achieved
L4.1 Continue to implement the City's Sustainable Land Management Program which includes the following <ul style="list-style-type: none"> <li>Sustainable Land Management Rate Rebate Scheme</li> <li>Environmental Works Grants for Private land holders</li> <li>Free land management advice to rural land holders</li> <li>Free educational events and field days.</li> </ul>	Sustainability Planning	Ongoing	Achieved
L4.2 Progressively improve the monitoring and reporting of the Sustainable Land Management Program outcomes to ensure that the overall program is achieving its objectives and that the land management needs of participating landholders are adequately met.	Sustainability Planning	Ongoing	Achieved
L4.3 Assess the effectiveness of the City's core land management incentive program, the Sustainable Land Management Rate Rebate Scheme, every 5 years to ensure that is achieving its stated goals and objectives. Implement program improvements to ensure continued effectiveness.	Sustainability Planning	Ongoing	Achieved
L4.4 Develop and implement an annual communications plan for the Sustainable Land Management Program which aims to increase community participation and awareness.	Sustainability Planning	Short	Achieved
L4.5 Seek external funding and support for rural land holders to undertake management works that protect and enhance natural and agricultural values, and ecological systems.	Sustainability Planning	Ongoing	Achieved
L4.6 Facilitate the uptake of external incentives, eco-markets and other programs which provide an alternative income or financial incentive for improving land health and biodiversity.	Sustainability Planning	Medium	Achieved
L5.1 Through appropriate research methodologies, establish a better understanding of rural landholder types and needs, and their level of awareness, motivations and capacity to address land management issues. Utilise this information to ensure that current and future land management programs are responsive to community needs.	Sustainability Planning	Medium	Achieved
L5.2 Establish an effective communications program which aims to provide regular and topical land management information to rural landholders. The program may include but is not limited to rural newsletters, web based communications and social media, locally relevant fact sheets, and targeted media campaigns.	Sustainability Planning	Ongoing	Achieved

## Priority area 2 Land



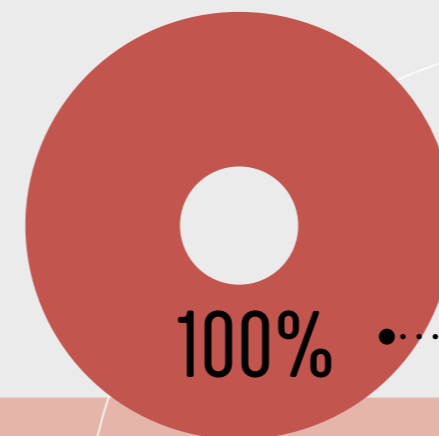
Action number and description	Department	Priority	Status
L5.3 Facilitate the establishment of area-based community action groups which focus on addressing local land management priorities.	Sustainability Planning	Long	Achieved
L5.4 Continue to deliver and support local field days and events which focus on locally relevant land management issues.	Sustainability Planning	Ongoing	Achieved
L5.5 Research the suitability of local land conditions within the rural areas to support differing land uses and agricultural pursuits.	Economic Development	Medium	Achieved
L5.6 Based on sound research, detailed land assessment, and where appropriate local knowledge of land condition, promote land uses and agricultural activities that are suited to local conditions and land capability.  Ensure that future proposals for rural land use change are compatible with the broader landscape values, local conditions and land capability. Refer to L3 for complimentary strategies and approaches.	Sustainability Planning	Ongoing	Achieved
L5.7 Employ a rural-agribusiness development officer to support the development of sustainable, viable and alternative uses for rural land within the municipality.	Economic Development	Medium	Achieved
L6.1 Help protect agricultural and natural values and the significant investment in land management already undertaken by the community by continuing to advocate to the State Government for increased investment in our municipality with respect to compliance with the Catchment and Land Protection Act (CaLP) 1994.	Sustainability Planning	Ongoing	Achieved
L6.2 Participate on regional advocacy groups to ensure that State Government agencies to facilitate investment in our municipality and to better coordinate resources and activities in order to achieve common land management goals.	Sustainability Planning	Ongoing	Achieved
L6.3 Continue to strengthen the working relationship between Council, local groups, catchment management agencies, waterway coordinating committees and other stakeholders through the implementation of core plans and strategies, e.g. Merri Creek and Environs Strategy.	Sustainability Planning	Ongoing	Achieved
L6.4 Advocate to the State Government and other relevant agencies such as Melbourne Water, VicTrack and VicRoads for pro-active management and improved coordination of land management efforts across publicly owned and managed land, with a particular focus on pest plant and animal control.	Sustainability Planning	Ongoing	Achieved
L6.5 Continue to develop, strengthen and maintain partnerships with neighbouring councils to pro-actively and collaboratively manage adjoining land.	Sustainability Planning	Ongoing	Achieved



## Priority area 3 Climate Change

### Key achievements

- As of 1 July 2021, 100 per cent renewable electricity is used in Council facilities, services and streetlights. This will cut corporate GHG emissions by approximately 66 per cent
- 12,500 streetlights upgraded with LED and CFL lamps, accounting for approximately 60 per cent of Council's streetlights.
- As of November 2021, 1.65 Megawatt of solar PV installed across 65 Council owned buildings, and 255 kWh of battery storage at 11 facilities
- Approximately 25 per cent of electricity used in Council facilities is produced by on-site renewable energy systems
- Existing buildings had energy audits and upgrades completed, saving 560 MW/hr per year
- In the 2021-22 financial year, City of Whittlesea started to purchase 100 per cent renewable energy for all Council operations through the new VECO Power Purchase Agreement, alongside 46 other Victorian councils
- On average, approximately 16 per cent of corporate emissions have been offset annually since the baseline year of 2011-2012. Emissions from transport and gas will continue to be offset from 2021-2022.
- ESD Guidelines in place to reduce the energy use and environmental impacts of new Council buildings. New Council buildings are built as all electric (no gas appliances) and are built to a higher level of energy efficiency and have solar PV systems to provide a minimum of 50 per cent of daytime electricity consumption installed as-built
- In November 2021, Council installed its first public rapid (DC) electric vehicle charging station
- Monitoring and periodic reporting of corporate greenhouse emissions since 2010-2011
- Completion of a heat vulnerability mapping (Cool It Project) to understand the municipality's vulnerability to heat risk
- Participation in the development of How Well Are We adapting tool as a tool to monitor, evaluate and report on Council adaptation
- Implementation of Environmental Upgrade Agreement program to assist local businesses with environmental upgrades
- Climate Ready Whittlesea adopted 2017 and a more recent Climate Change Plan was adopted by Council 21 November 2022
- Completed a Climate Change Risk Assessment, identifying economic, environmental and social impacts of changing climatic conditions on Council assets, operations and services through a series of three, three-hour workshops engaging 61 staff from 49 departments. Council has subsequently embedded Climate Risk analysis into its annual Service (Operational) Risk assessment process.



Climate Change actions

Achieved

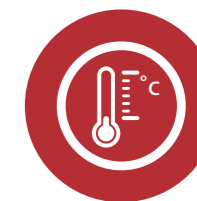


# Priority area 3 Climate Change



Action number and description	Department	Priority	Status
CC1.1 Develop a Greenhouse Emissions Reduction Framework to define the scope and methods for measuring and reporting greenhouse gas emissions.	Financial Services	Short	Achieved
CC1.2 Develop a series of Emissions Reduction Plans to guide corporate and departmental planning and actions that will reduce emissions, addressing buildings, transport fuel emissions, public lighting, materials and waste.	Sustainability Planning	Short	Achieved
CC1.3 Instigate improvement projects that will reduce energy use across Council's existing operations and infrastructure.	Facilities Management	Short-Medium	Achieved
CC1.4 Ensure that all new buildings, projects, operations and activities are executed in a manner that minimises greenhouse gas emissions and other environmental impacts.	Major Projects	Ongoing	Achieved
CC1.5 Purchase emissions offsets to assist in achieving Council's emissions reduction targets, after energy efficiency measures have been implemented. Emissions offsets may be purchased through a combination of Australian and alternative offsets and in accordance with corporate values.	Financial Services	Short-Medium	Achieved
CC1.6 Track Council's progress toward the corporate energy use and climate change impact goals using established greenhouse accounting methods and report this progress annually to Council.	Financial Services	Short-Medium	Achieved
CC2.1 Establish a whole of organisation approach to facilitate effective and efficient climate change action.	Sustainability Planning	Ongoing	Achieved
CC2.2 Incorporate greenhouse emissions reporting and greenhouse emission reduction plan actions into the Community Plan, Corporate Plan, Departmental Plans, and individual Work Plans.	Sustainability Planning	Ongoing	Achieved
CC2.3 Facilitate cross-directorate collaboration on greenhouse emission reduction activities across Council, including organised committees and working groups as needed.	Sustainability Planning	Ongoing	Achieved
CC2.4 Facilitate engagement with staff, the community and stakeholders on climate change related initiatives. Refer to Change Strategies theme for further detail.	Sustainability Planning	Ongoing	Achieved
CC3.1 Provide community services, including waste management, home care, youth, maternal and senior services, in a manner that minimises greenhouse gas emissions.	All Departments	Ongoing	Achieved

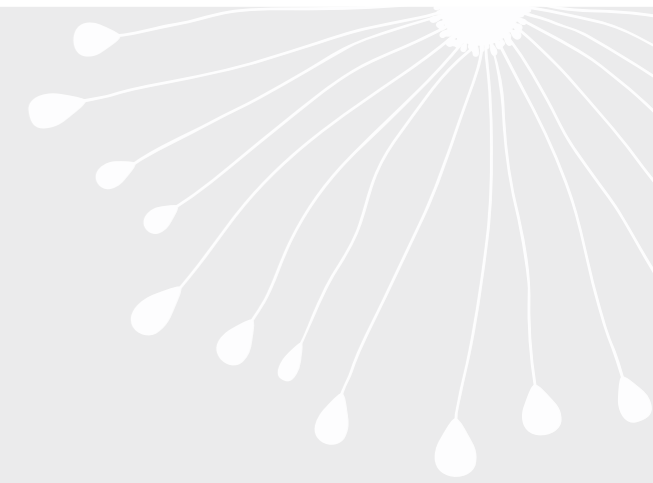
# Priority area 3 Climate Change



Action number and description	Department	Priority	Status
CC3.2 Encourage domestic construction that exceeds minimum energy and greenhouse gas emission performance standards.	Established Areas Planning; Growth Areas Development Assessment	Ongoing	Achieved
CC3.3 Encourage the use of renewable energy supplies, including solar panels.	Sustainability Planning	Ongoing	Achieved
CC3.4 Support 'green' business and economic development opportunities that provide a low emission employment future within the municipality.	Economic Development	Ongoing	Achieved
CC3.5 Incorporate greenhouse gas emission initiatives into Council's planning instruments. Refer to Urban Development and Built Environment theme for further detail.	Sustainability Planning	Short	Achieved
CC3.6 Participate in the ongoing development and implementation of the Towards Zero Net Emissions Program for the Northern Alliance for Greenhouse Action (NAGA) Region, and other NAGA activities as appropriate.	Sustainability Planning	Short	Achieved
CC4.1 Apply a hazard prevention and risk management approach to avoiding and/or minimising the negative impacts of climate change.	Sustainability Planning	Short	Achieved
CC4.2 Develop and implement a climate change adaptation plan encompassing all Council planning and development, infrastructure provision, and community services to appropriately prepare and adjust to the impacts of climate change.	Sustainability Planning	Short	Achieved
CC4.3 Incorporate initiatives that address the impacts of climate change into Council's planning instruments. Refer to Urban Development and Built Environment theme for further detail.	Strategic Planning and Design	Medium	Achieved
CC5.1 Integrate climate change considerations into Council's advocacy policy and priorities.	Sustainability Planning	Short-Medium	Achieved
CC5.2 Contribute to the advocacy activities of network organisations on climate change issues of importance to Council and the Community.	Sustainability Planning	Ongoing	Achieved
CC5.3 Advocate to the Victorian and Australian Governments for clear climate change policy solutions and effective climate change action.	Sustainability Planning	Ongoing	Achieved
CC5.4 Seek support from Victorian and Australian Governments and other organisations for Council and the Community to make the transition to a low emissions economy.	Sustainability Planning	Short-Medium	Achieved

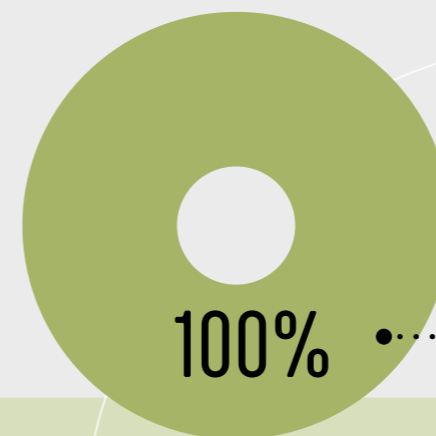


## Priority area 4 Biodiversity



### Key achievements

- Planting over 1,100 trees annually in street, open space, and community facility settings
- Introduced local planning policy (Amendment C197) into the Whittlesea Planning Scheme that provides guidance on habitat corridors and native vegetation retention, net gain offsets and the Green Wedge
- Updated the River Red Gum Protection Policy (Amendment C221) to ensure that the development of existing and future urban and rural areas considers the presence of and plans for the retention, enhancement and long-term viability of River Red Gum trees. This was integrated into Clause 12.01-1L and various Schedules in the Whittlesea Planning Scheme
- Endorsement and implementation of the Native Vegetation Offset Plan (NVOP) to allow for the acquittal of Council's existing Native Vegetation Offset liability
- Purchase of 25 hectares of Grassy Eucalypt Woodland in accordance with NVOP to partially acquit Council's native vegetation offset liability
- Embedded revegetation as a business-as-usual activity into the main services contract
- Management of a Seed Production Area (SPA) for indigenous plants and a productive nursery of rare plants for later reintroductions into reserves
- Successful establishment of native grassland restoration areas via direct seeding
- Prioritisation of local retention rate and threatened species and translocating where required into local conservation reserves
- Successfully secured \$100,000 per annum to deliver canopy targets for additional tree planting in conservation reserves
- Delivery of approximately 15 ecological burns annually across the municipality as required in the conservation services contract (Naturelinks)
- Levels of service approach identified for the pest animal program now embedded in the main service contract
- Continuous delivery of annual fauna surveys of three key regional parklands, targeted survey for local threatened animal species (Growling Grass Frog and Golden Sun Moth), annual monitoring programs for threatened flora (e.g., Matted Flax Lilly) and annual benchmarking surveys conducted in support of service contract/ contractor performance (Annual Vegetation Assessment)
- Biodiversity Strategy 2019-2029 endorsed
- Commencement of Biodiversity Asset Mapping Project to inform future decisions regarding the protection and management of Biodiversity
- Creation of an Environmental Planning Coordinator position
- Creation of a Biodiversity Strategy and Auditing position
- Completion of City of Whittlesea Roadside Environmental Regulations.



**Biodiversity actions**

Achieved



# Priority area 4 Biodiversity



Action number and description	Department	Priority	Status
B1.1 Establish a comprehensive and reliable data set of known ecological sites, habitat corridors and significant flora and fauna, both within the rural and urban areas of the municipality to utilise as a basis for long term biodiversity planning. Undertake ecological assessments where necessary to update existing reports or provide ecological data where there are known gaps in information.	Sustainability Planning	Short	Achieved
B1.2 Improve Council's understanding and knowledge of the potential impact of climate change on local biodiversity values and the potential resilience of known ecological sites through research and collaboration.	Sustainability Planning	Long	Achieved
B1.3 Develop and implement a municipal-wide Biodiversity Action Plan which articulates Council's strategic objectives and targets, and associated priority actions and programs for managing biodiversity in all natural areas within the municipality. In particular, the Plan will identify specific actions to protect and enhance sites of ecological significance and to improve the connectivity between those sites.	Sustainability Planning	Short	Achieved
B1.4 Employ a 'greening' officer to support the implementation of B1.3 and associated programs which facilitate landscape change in the rural areas and improved urban biodiversity. Responsibilities of the greening officer would include the implementation of B4 and associated strategies and approaches.	Sustainability Planning	Medium	Achieved
B1.5 Develop and implement programs and incentives which encourage biodiversity improvements in the urban parts of the municipality.	Sustainability Planning	Medium	Achieved
B1.6 Continue to investigate and facilitate the establishment of new opportunities for additional conservation parkland reserves which secure areas of high conservation significance outside the urban growth boundary.	Strategic Planning and Design	Ongoing	Achieved
B2.1 Review the Whittlesea Planning Scheme (including the Municipal Strategic Statement) to improve and strengthen protection measures for local biodiversity and fauna.	Strategic Planning and Design	Ongoing	Achieved
B2.2 Implement and periodically review the City's Green Wedge Management Plan 2011-2021. The Plan will be reviewed at 5 years to ensure it continues to reflect current trends and legislative changes and is responsive to community needs and aspirations. Implementation progress will be reported periodically to Council and the community.	Strategic Planning and Design	Ongoing	Achieved
B2.3 Ensure that the City's River Red Gum Protection Policy and Guidelines are consistent with current best management practices and approaches. Broaden the policy to recognise the nationally significant Grassy Eucalypt Woodlands of the Victorian Volcanic Plains listed under the EPBC Act 1999.	Sustainability Planning	Short	Achieved
B2.4 Increase environmental compliance activity in the rural areas, particularly on matters that impact known sites of ecological significance. Refer to Land Management theme for further detail.	Sustainability Planning	Ongoing	Achieved

# Priority area 4 Biodiversity



Action number and description	Department	Priority	Status
B2.5 Develop and implement local planning policy which better facilitates local faunal movement in new growth areas with a particular emphasis on kangaroo management.	Sustainability Planning	Short	Achieved
B2.6 Research the impacts of domestic and feral animals on native fauna, particularly in residential areas in close proximity to sites of high habitat and faunal value. Investigate the actions of other public agencies and authorities and how they have implemented control mechanisms for domestic and feral animals (e.g., cat curfew), and how successful they have been.	Sustainability Planning	Short	Achieved
B2.7 Continue to run Council's Local Laws Responsible Pet Ownership campaigns in identified growth areas.	Sustainability Planning	Ongoing	Achieved
B2.8 Support the development and implementation of policy to manage nature strips in residential areas of the municipality.	Infrastructure and Technology	Short	Achieved
B3.1 Review the municipality's Open Space Strategy 1997 to better acknowledge the significant role it now plays in the management of local biodiversity. Refer to the Land theme for further guidance.	Parks and Open Space	Short	Achieved
B3.2 Apply best practice and an adaptive management approach to conservation reserves and areas which aim to maximise local biodiversity outcomes.	Parks and Open Space	Ongoing	Achieved
B3.3 Manage waterways, lakes, ponds and wetlands (for which Council has responsibility) for their ecological values, alongside their stormwater functions. Refer to the Water theme for further detail.	Parks and Open Space	Ongoing	Achieved
B3.4 Monitor flora and fauna values at key conservation reserves such as the Quarry Hills Parkland, Growling Frog Golf Course, Epping North conservation reserves, and the Plenty Road Growth Corridor conservation reserves.	Parks and Open Space	Ongoing	Achieved
B3.5 Continue to manage Council's conservation reserves in accordance with best practice, and periodically review and update Council's Open Space and Conservation Reserve Management Procedures to ensure that they are consistent with current best practice. Ensure that site improvements and ongoing maintenance activities on Council's conservation reserves are in accordance with endorsed procedures.	Parks and Open Space	Ongoing	Achieved
B3.6 Continue to develop, review and update site specific management plans for individual conservation reserves.	Parks and Open Space	Ongoing	Achieved
B3.7 Continue to report on site condition and biodiversity improvements to relevant natural resource management authorities.	Parks and Open Space	Ongoing	Achieved
B4.1 Raise local awareness, knowledge and appreciation of biodiversity values and natural environment through specific educational programs and activities in partnership with key organisations and groups working locally. Activities may include field days, themed events and educational sessions, school visits and other initiatives.	Sustainability Planning	Ongoing	Achieved

# Priority area 4 Biodiversity



Action number and description	Department	Priority	Status
B4.2 Build on the successes of the municipality's annual Community Planting Program by pro-actively engaging with local groups and interested residents in the management of local conservation reserves. (Refer to L2.1).	Parks and Open Space	Ongoing	Achieved
B4.3 Encourage, support and facilitate the establishment of new biodiversity interest groups such as 'Friends of' groups and others focused on local biodiversity outcomes.	Sustainability Planning	Short	Achieved
B4.4 Continue to support the activities of existing local environment groups through a variety of mechanisms including the municipality's Community Development Grants, promotion of activities, providing meeting spaces, equipment and materials, and opportunities to come together and share experiences.	Sustainability Planning	Ongoing	Achieved
B5.1 Continue to implement the City's Sustainable Land Management Program which incorporates incentives for biodiversity outcomes. Refer to the Land theme for further detail.	Sustainability Planning	Ongoing	Achieved
B5.2 Periodically assess the effectiveness of the municipality's key biodiversity incentive program, the Environmental Works Grants Program, and initiate improvements which maximise biodiversity outcomes.	Sustainability Planning	Short	Achieved
B5.3 Raise community awareness and where appropriate facilitate the uptake of eco-market programs which provide funds to private land holders for managing eco-system services such as protecting and managing native vegetation.	Sustainability Planning	Short	Achieved
B6.1 Develop and implement a Whittlesea specific framework for the implementation and administration of the Victorian State Government's Native Vegetation Management – A Framework for Action. The key purpose of the framework will be to facilitate the long-term protection of key ecological sites and connections between those sites, and to ensure that offsets derived from unavoidable vegetation removal are retained in close proximity to the loss, that is, preferably within the municipality.  The Whittlesea specific framework will include: <ul style="list-style-type: none"> <li>• New local planning policy</li> <li>• Supporting guidelines and internal processes</li> <li>• Municipal level Native Vegetation Strategic Offset Plan</li> <li>• Probity Plan ensuring public transparency and accountability of local framework.</li> </ul>	Parks and Open Space	Short	Achieved
B6.2 Develop and implement a municipal level Native Vegetation Strategic Offset Plan which provides the necessary detail required to successfully facilitate the provision of net gain off-sets within municipal boundaries.	Parks and Open Space	Short	Achieved

# Priority area 4 Biodiversity



Action number and description	Department	Priority	Status
B6.3 Actively negotiate with developers throughout all stages of the development process for the provision of appropriately sized buffers along waterways and between sites of biodiversity value and urban infrastructure and facilitate greater habitat connectivity between key habitat areas.	Parks and Open Space	Ongoing	Achieved
B6.4 Advocate throughout all stages of growth area planning and via other opportunities for the long-term protection of local biodiversity and associated key habitat corridors throughout the municipality, particularly east to west corridors.	Strategic Planning and Design	Ongoing	Achieved
B6.5 Increase surveillance and enforcement of native vegetation offset agreements and related vegetation protection requirements derived from avoidable vegetation removal associated with urban development proposals.	Parks and Open Space	Ongoing	Achieved
B6.6 Negotiate improved urban biodiversity outcomes through landscape master plans that are required via the development approvals process.	Parks and Open Space	Ongoing	Achieved
B7.1 Review the City of Whittlesea Roadside Management Plan 1998 to reflect legislative and policy changes, 2009 Bushfire Royal Commission outcomes and changes in best practice. The Plan will be updated every 5 years to ensure it remains current. Implementation progress will be reported periodically to Council and the community.	Sustainability Planning	Short	Achieved
B7.2 Continue to implement roadside weed control programs adjacent to areas of high biodiversity values.	Sustainability Planning	Ongoing	Achieved
B8.1 Advocate, facilitate and support the establishment and long-term management of key regional conservation parklands within the municipality which maximise biodiversity and community outcomes. Particular examples include the Merri Creek Regional Park and the Quarry Hill Parklands.	Sustainability Planning	Ongoing	Achieved
B8.2 Working in collaboration with the Merri Creek Management Committee and other member Council's and groups to progressively implement the Merri Creek and Environs Strategy 2009-2014 and to update and implement the Upper Merri Biodiversity Network Plan 2009.	Sustainability Planning	Ongoing	Achieved
B8.3 Support the Darebin Creek Management Committee to develop and implement the Darebin Creek Management Plan.	Parks and Open Space	Short	Achieved
B8.4 Continue to work in cooperation with Melbourne Water to facilitate a greater uptake of the Melbourne Water Stream Frontage Management Program in priority areas and associated local programs and initiatives including compliance activities.	Sustainability Planning	Ongoing	Achieved



## Priority area 5 Urban development and the built environment

### Key achievements

- Introduction of the Bushfire Management Local Planning Policy (Amendment C198) to address strategic settlement planning to direct new settlement away from areas of high fire hazard. This was integrated into Clause 13.02-1L of the Whittlesea Planning Scheme
- Introduction of the Housing Diversity and Design Local Planning Policy and in particular, changes to the General Residential Zone (GRZ) Schedules 4 and 5 (Amendment C200) in response to LiDAR evidence which linked the loss of urban tree canopy cover in the established suburbs of the City to infill development. The GRZ Schedule 4 and GRZ Schedule 5 are contained in Clause 32.08 of the Whittlesea Planning Scheme to address landscape character and the provision of canopy trees on site for multi-unit developments
- Introduction of the Environmentally Sustainable Development Local Planning Policy (Amendment GC110) to ensure that new development requiring a planning permit will achieve best practice across the range of ESD principles. This was integrated into Clause 15.02-1L of the Whittlesea Planning Scheme
- Participation in the trial for the Sustainable Subdivisions Framework focusing on improving the long-term community benefits by a subdivision through the planning process
- The development of the Local and Neighborhood Centres Revitalisation Plan which includes greening aims and improvements for active travel
- Creation of the Environmental Sustainable Design Planner position
- Creation of an Environmental Planning Coordinator position.



# Priority area 5

## Urban development and the built environment



Action number and description	Department	Priority	Status
U1.1 Use Structure Planning processes for established areas to facilitate the creation of more sustainable communities.	Established Areas Planning	Ongoing	Achieved
U1.2 Promote the use of more sustainable land use and travel patterns, and the increase in housing density in appropriate areas, through projects such as the Housing Diversity Project, the Epping Central Structure Plan, Thomastown Lalor Structure Plan, Thomastown Industrial Areas Strategy and future strategic plans for established areas of the municipality.	Established Areas Planning	Ongoing	Achieved
U1.3 Pursue opportunities for the consolidation of existing areas that are well connected by a variety of transport modes and well serviced by infrastructure, and employment opportunities. Pursue improvements to existing infrastructure and services in these existing areas.	Engineering and Transportation; Established Areas Planning	Ongoing	Achieved
U2.1 Use the Framework Planning and Precinct Structure Planning processes for any new growth area to achieve innovations and improvements in environmental sustainability.	Strategic Planning and Design	Ongoing	Achieved
U2.2 Identify infrastructure needs within Precinct Structure Plans for new residential and employment areas.	Strategic Planning and Design	Ongoing	Achieved
U2.3 Use developer contributions to assist in funding appropriate levels of community infrastructure in newly developed areas.	Major Projects	Long	Achieved
U3.1 Ensure that all planning and development is based on a sound understanding of the natural and urban context, including cultural heritage.	Sustainability Planning	Ongoing	Achieved
U3.2 Improve existing internal processes to ensure that adequate specialist advice on relevant sustainability matters is sought for the assessment of development proposals.	Planning and Major Projects Directorate	Ongoing	Achieved
U3.3 increase the capacity of staff to better utilise existing development assessment processes to achieve sustainable development outcomes.	Established Areas Planning	Ongoing	Achieved
U3.4 Investigate the use of, and where appropriate apply, discretionary tools that can be utilised during the planning application and development assessment process to achieve sustainability outcomes.	Sustainability Planning	Short	Achieved
U3.5 Require a Green Travel Plan for all significant new developments through the development assessment process (where significant is defined as 30 or more residential dwellings, or more than 5000m <sup>2</sup> of non-residential development).	Established Areas Planning	Short	Achieved

# Priority area 5

## Urban development and the built environment



Action number and description	Department	Priority	Status
U3.6 Review the Whittlesea Planning Scheme to: <ul style="list-style-type: none"> <li>Ensure that the Municipal Strategic Statement and Local Planning Policies clearly communicate sustainability goals and objectives.</li> <li>Ensure the provisions, policies and tools of the scheme integrate consideration of climate change risks in the assessment process for planning and building applications.</li> <li>Make the best use of the current provisions and tools within the Victorian Planning Provisions by making amendments to the planning scheme to achieve sustainable outcomes.</li> <li>Develop a policy that specifies land allocation for community gardens, taking into account the locational requirements highlighted in the Background Paper to the Community Garden Policy.</li> </ul>	Strategic Planning and Design	Short-Medium	Achieved
U3.7 Where existing planning tools and methods are inadequate, research and pursue the creation of more innovative and effective approaches to support sustainable development.	Sustainability Planning	Ongoing	Achieved
U3.8 Finalise Council's The Guidelines to Planning and Development to provide direction on achieving the principles of traditional neighbourhood design and sustainability across the City of Whittlesea. In particular, ensure that these Guidelines inform the following Council policy and processes: <ul style="list-style-type: none"> <li>Municipal Housing Strategy;</li> <li>Development in both established and growth areas, including through the Precinct Structure Planning process; and,</li> <li>The review of the Whittlesea Planning Scheme.</li> </ul>	Strategic Planning and Design	Short	Achieved
U4.1 Ensure that the Integrated Transport Strategy aims to: <ul style="list-style-type: none"> <li>Identify and reserve appropriate corridors for the future provision of public transport through strategic planning and appropriate planning scheme provisions.</li> <li>Advocate to State Government for the forward planning and provision of transport infrastructure and services to connect growth areas with services and infrastructure, local activities, places of employment, and metropolitan Melbourne.</li> <li>Uses Precinct Structure Planning in the growth areas to facilitate connections between places of residence, places of employment, and to the established areas.</li> <li>Improves sustainable transport options provided in the established areas.</li> <li>Advocates for community transport services to meet local transport needs not catered for by public transport.</li> </ul>	Engineering and Transportation	Ongoing	Achieved

# Priority area 5

## Urban development and the built environment



Action number and description	Department	Priority	Status
U4.2 Continue to advocate to the State Government for the appropriate provision of alternative and sustainable transport networks. This includes seeking the extension of heavy rail to Epping North and Mernda growth areas; and, the expansion and connection of local walking and cycling pathway networks.	Advocacy and Communications	Ongoing	Achieved
U4.3 Undertake land use planning in growth areas which facilitates a mix of uses in walkable catchments	Strategic Planning and Design	Ongoing	Achieved
U4.4 Promote alternative transport in order to reduce private car travel, including through supporting the Whittlesea Northern Transport Links project which aims to work with schools and community in the growth areas of Epping North, Laurimar and Mernda to implement active transport initiatives, including for example, bicycle safety and education.	Leisure Services and Planning	Short	Achieved
U5.1 Encourage new buildings within the City of Whittlesea to exceed minimum environmental performance standards by integrating building performance benchmarks into the City of Whittlesea's planning application process.	Established Areas Planning; Strategic Planning, Growth Areas Development Assessment	Short	Achieved
U5.2 Provide advice and assistance to the community on environmentally sustainable design for new homes or buildings, extensions and retrofits.	Sustainability Planning	Ongoing	Achieved
U5.3 Facilitate improved environmental performance and resource efficiency in the design, construction, operation, and maintenance of all Council buildings and infrastructure.	Major Projects	Ongoing	Achieved
U6.1 Participate in cross-municipality initiatives that contribute to the development of improved sustainable urban development governance and policy, such as the Council Alliance for Sustainable Built Environment (CASBE).	Sustainability Planning	Ongoing	Achieved

# Priority area 5

## Urban development and the built environment



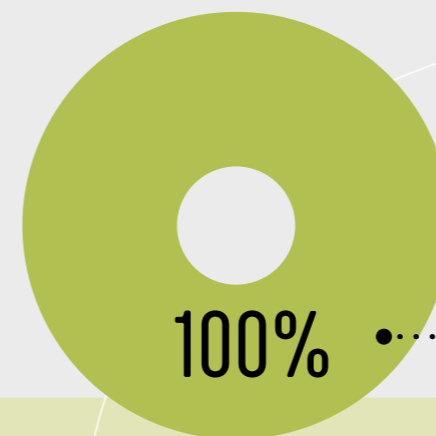
Action number and description	Department	Priority	Status
U6.2 Actively engage with and support advocacy campaigns of the National Growth Areas Alliance (NGAA) to the Federal government which relate to sustainability issues on the urban fringe, including provision of efficient public transport.	Advocacy and Communications	Ongoing	Achieved
U6.3 Actively engage with and support advocacy campaigns of the Interface Councils Group to the Victorian State Government on sustainability issues.	Advocacy and Communications	Ongoing	Achieved
U6.4 Influence developers to incorporate best practice sustainability and traditional neighbourhood design into development by: <ul style="list-style-type: none"> <li>implementing ESD Policy through Council's The Guidelines for Planning and Development;</li> <li>conducting education and advocacy programs;</li> <li>offering incentives to developers; and,</li> <li>working in partnership with the development industry.</li> </ul>	Sustainability Planning	Ongoing	Achieved
U6.5 Demonstrate leadership by sharing Council's achievements in sustainable urban development and building on partnerships with the City of Whittlesea community, other local government professionals, State Government and non-government organisations and property developers.	Marketing and Communications	Ongoing	Achieved
U6.6 Investigate the feasibility of Council becoming a member of the International Sustainable Cities Planning for Long-term Urban Sustainability (PLUS) Network.	Sustainability Planning	Medium	Achieved
U6.7 Encourage sustainable building design within the municipality through demonstrating sustainability leadership in all Council building and infrastructure projects.	Major Projects	Ongoing	Achieved



## Priority area 6 Waste management and resource recovery

### Key achievements

- In 2021-22, collected 45,0474 tonnes of garbage, 19,103 tonnes of recycling, 19,729 tonnes of food and garden organics, 49kg of light globes, 7kg of mobile phones, 843kg of batteries, 79 tonnes of whitegoods, 2,600 tonnes of bundled branches and 107 tonnes of e-waste
- Provision of the pop-up recycling station as a mobile solution to recycling and disposal of items normally associated with moving into a new home (2017)
- In mid-2020, introduced food waste recycling to the user pays service for garden waste. The kerbside food and garden waste recycling service is now utilised by approximately 55,000 households, and has diverted 38,806 tonnes of food and garden waste from landfill since mid-2020
- Tried using reusable plates, cups and cutlery at four major community events in 2018-19. Wash stations were staffed by Council staff and community volunteers. This initiative saved over 2,600 pieces of food packaging from being manufactured and disposed of
- Piloted the Whittlesea Waste Busters Program to measure the success of undertaking a targeted community education and engagement program on behaviour change
- Successfully secured State Government funding for a Litter Prevention Officer position (2016) to investigate dumped rubbish and run an anti-littering education campaign along Council's waterways
- Winners of the 2015 Keep Australia Beautiful Victorian Sustainable Cities award for the Raspberry Pi Program
- Introduced food to the garden waste bin in 2020
- In 2019, established recycling hubs around the municipality to enable easier collection of common household items
- 'Food Know How' municipal wide education program focussed on reducing food waste in 2018
- Clean up your game – municipal wide recycling program focussed on sporting clubs
- Introduced commercial recycling in 2017
- Introduce a litter enforcement team to protect the environment from litter and dumped rubbish
- Glass recycling kerbside service was introduced in 2022.



**Waste management  
and resource recovery actions**  
Achieved





## Priority area 6

# Waste management and resource recovery



Action number and description	Department	Priority	Status
WM1.1 Council to make sustainable decisions on dealing with waste from their own operations. Reduce waste to landfill in its own operations through waste prevention; and, where it is the most sustainable option, divert valuable recoverable materials for reuse or recycling.	Environmental Operations	Ongoing	Achieved
WM1.2 Council will make decisions on the provision of recycling and waste collection services based on balancing economic, social and environmental factors, through a cost-benefit analysis approach, that aims to provide the optimal net-community benefit to City of Whittlesea community.	Environmental Operations	Ongoing	Achieved
WM1.3 Investigate the potential to extend Council's kerbside recycling collection service (and accompanying education component) to non-residential properties.	Environmental Operations	Short-Medium	Achieved
WM1.4 Encourage the City of Whittlesea community to use Council's current services correctly therefore sending less waste to landfill and recovering, recycling and reusing more materials. Promote through a range of communication and education avenues.	Environmental Operations	Ongoing	Achieved
WM1.5 Continue to encourage and support on-site composting and worm farming of garden and food organics.	Environmental Operations	Ongoing	Achieved
WM1.6 Support the commercial and industrial sector to avoid waste, where practical, through cleaner production practices and recovering valuable materials.	Environmental Operations	Short-Medium	Achieved
WM1.7 Investigate high value materials that are currently treated as waste and determine the feasibility of recovering them for reuse or recycling.	Environmental Operations	Short-Medium	Achieved
WM1.8 Develop policy positions and approaches for dealing with new waste streams which will be generated within the City of Whittlesea.	Environmental Operations	Short-Medium	Achieved
WM1.9 Continue bin inspection program primarily as an effective education and engagement tool to encourage correct use of bins and avoid contamination of the recycling streams.	Environmental Operations	Short	Achieved
WM1.10 Review the new residents' kit on an annual basis to check the appropriateness of information, and whether it is understood by the Culturally and Linguistically Diverse community. Information should include how to manage household waste and what happens to various waste streams.	Environmental Operations	Short	Achieved
WM2.1 Continue to coordinate community education and engagement programs to stop littering and rubbish dumping.	Environmental Operations	Short	Achieved

## Priority area 6

# Waste management and resource recovery



Action number and description	Department	Priority	Status
WM2.2 Continue to investigate reports of dumped rubbish and work collaboratively with the Environment Protection Authority to follow up with enforcement and litter prevention strategies.	Environmental Operations	Short	Achieved
WM2.3 Promote the Environment Protection Authority's litter reporting system to the community.	Environmental Operations	Short	Achieved
WM2.4 Advocate to relevant government agencies for a subsidy for safe domestic asbestos removal and disposal.	Environmental Operations	Short	Achieved
WM2.5 Undertake a more strategic approach to litter prevention and debris management through implementation of the Waste Management Strategy 2012 - 2020 and Stormwater Management Plan 2012 - 2017.	Environmental Operations	Short	Achieved
WM3.1 Review Council's Green Purchasing Policy.	Environmental Operations	Short	Achieved
WM3.2 Look for new opportunities to purchase environmentally preferable materials.	All Departments	Short	Achieved
WM3.3 Increase annual expenditure on environmentally preferable purchases (relative to the Council's annual budget) where clear benefits based on evidence can be established.	Procurement	Ongoing	Achieved
WM3.4 Support Council Officers with purchasing responsibilities to implement the sustainable purchasing goals articulated in the Council's Procurement Policy.	Procurement	Ongoing	Achieved
WM3.5 Deliver training and capacity building activities on sustainable purchasing in conjunction with Procurement Policy training for Council Officers with purchasing responsibilities.	Procurement	Short	Achieved
WM3.6 Inform the community about environmentally preferable products through education and engagement activities.	Environmental Operations	Ongoing	Achieved
WM4.1 Advocate to State Government for action on emerging problematic waste streams, such as domestic asbestos disposal, to reduce the additional cost imposition on Local Government and potentially high public health risk of dealing with this waste stream.	Environmental Operations	Ongoing	Achieved
WM4.2 Council to lobby the Federal and State governments, and other agencies, to reduce product packaging where appropriate, to minimise waste and the effects of litter in the community and on the environment.	Environmental Operations	Ongoing	Achieved



## Priority area 7 Change strategies

### Key achievements

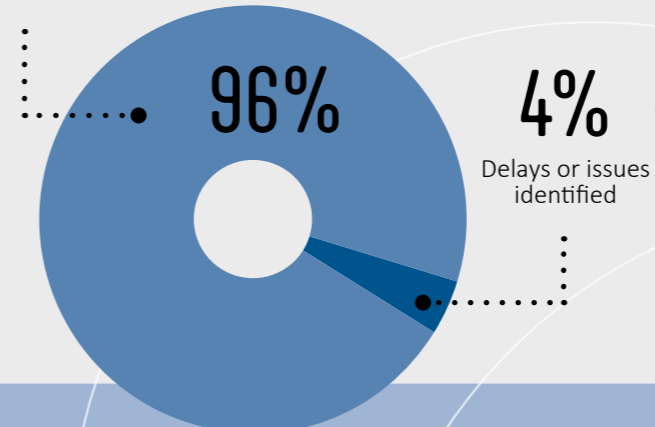
- Sustainable purchasing was built into Council's Procurement Policy in 2018, with a Sustainability Planning officer embedded in the Procurement team one day a week for over four years to assist with embedding sustainability into procurement systems and processes
- Sustainability is included as one of four standard evaluation criteria with a default 10 per cent weighting in Council's procurement process. Sustainability questionnaire was built into Council's tender/quotation templates (up to 5 per cent sustainability bonus added to evaluation score)
- Sustainable procurement spend categorisation was built into the finance system and training was rolled out to all purchasing officers
- Adaptation of Supply Chain Sustainability School to Victorian local government sector
- eWater systems were installed in Civic Centre to reduce the need for use of chemical cleaners.

### Community capacity building

- Delivery of the Collectively Caring for Climate Project. A total of 330 local residents participated including people of all ages and from diverse cultural backgrounds, including individuals, schools, artists, community groups and organisations. The artworks were printed onto a range of materials for different uses including aluminium panels (for the 17 murals), 800 road foil stickers and a series of fabric banners
- Delivery of the GPS litter picker project with students at the Mill Park Library Makers Club
- Subscription Australian Energy Foundation household energy program resulted in 58 solar installs between 2015 and 2020, contributing to household solar on 21.3 per cent of dwellings across the municipality
- Implementation of the Pest Plant Local Law Education and Compliance Program to offer weed mapping services, on-site consultation, provision of weed management advice, and educational materials
- Established Hume Whittlesea Teachers Environment Network to provide information and resources to educators to assist with environmental education and projects
- Undertook an Environmental Education Project to outline the environmental education framework, objectives, guiding principles, evaluation toolbox and community of practice
- Established the Sustainability Outreach Whittlesea program which offered funding for sustainability outreach programs to schools, early years centres, community groups and businesses
- Nature play and bush kinder activities have grown to a regular series of annual events
- Creation in partnership with Eco Explorers, 15 'Nature play in my background' videos loaded onto Council's website during COVID-19 related restrictions
- Partnership with Early Years and Health Planning have resulted in targeted nature plan event series called 'Family Nature Club' that targets disadvantaged, isolated or high needs communities.

### Change strategies actions

Achieved



# Priority area 7

## Change strategies



Action number and description	Department	Priority	Status
CS1.1 Progressively embed Environmental Sustainability Strategy Policy Directions, Strategies and Approaches into the annual Corporate and Department Business Planning processes.	All Departments	Ongoing	Achieved
CS1.2 Incorporate environmental sustainability indicators and targets as specified in this Strategy (and its associated implementation plans) into: <ul style="list-style-type: none"> <li>Corporate and Department Business Plans; and</li> <li>Employment contracts for senior management.</li> </ul>	Environmental Operations	Ongoing	Achieved
CS1.3 Incorporate sustainability assessment criterion in decision making processes for Council including Council Reports, contracts, capital works and budget initiatives.	Sustainability Planning	Ongoing	Achieved
CS1.4 Review and evaluate sustainability related procurement processes and practices every year to determine the ongoing effectiveness of the policy and identify areas for improvement.	Economic Development	Ongoing	Achieved
CS1.5 Implement initiatives which continually build the capacity and expertise of Council staff to deliver best practice sustainability programs and services through information provision, professional development, training and recognition.	Sustainability Planning	Short	Achieved
CS1.6 Strengthen the role and capacity of the Staff Environment Group to better support the organisation to implement the Environmental Sustainability Strategy and Staff Values, where it relates to improving sustainable work practices.	Sustainability Planning	Ongoing	Achieved
CS2.1 Monitor and report progress in achieving sustainable outcomes for the municipality based on the environmental indicators identified in this Strategy. Where appropriate report results annually to Council to inform decision making.	Sustainability Planning	Ongoing	Achieved
CS2.2 Report Council's sustainability performance and associated activities to the community through the Council's Annual Report.	Sustainability Planning	Ongoing	Achieved
CS2.3 Utilise Council's business planning processes (i.e., budget and capital works planning, departmental business plans, and corporate planning processes) to consistently report and evaluate sustainability performance.	Work Smart	Medium	Achieved
CS2.4 Progressively align and embed sustainability goals and targets as identified in this Strategy with the Council's Four-Year Action Plan (2013 – 2017).	Work Smart	Short	Achieved
CS2.5 Support ongoing organisational change programs which include modules that aim to continue the development of a culture of sustainability consistent with the goals of this Strategy and Council's sustainability staff values.	Human Resources	Short	Achieved

# Priority area 7

## Change strategies



Action number and description	Department	Priority	Status
CS3.1 Continue to promote Council and community activities, programs and achievements through Council publications, broader media avenues and professional / industry publications.	Marketing and Communications	Ongoing	Achieved
CS3.2 Develop and implement a communications and marketing strategy specific to the Environmental Sustainability Strategy to effectively communicate the strategy goals and implementation progress both within Council (internal to the organisation) and to the broader community.	Sustainability Planning	Short	Achieved
CS3.3 Progressively establish Council buildings and facilities as sustainability demonstration projects, with the aim of establishing the Council as a leader in sustainable design, materials selection and technologies.	Sustainability Planning	Medium	Achieved
CS3.4 Every two years prepare an 'environment indicators report' which details progress against the indicators listed in this strategy and associated key achievements. The report will be available to the community and will assist Council in assessing whether this Strategy is meeting its stated goals.	Sustainability Planning	Ongoing	Delays or Issues Identified
CS4.1 Provide a tailored range of educational and behaviour change activities and programs that are accessible to a wide section of the community. Periodically evaluate programs and activities to ensure that delivery methods and approaches are effective and appropriate for the audience.	Sustainability Planning	Ongoing	Achieved
CS4.2 Continue to provide a 'sustainable home advisory service' to residents for the provision of independent advice and referral to sustainability programs and services. Progressively improve the marketing and communications of this service to maximise exposure to residents.	Sustainability Planning	Ongoing	Achieved
CS4.3 Work in partnership with local service providers, including libraries and adult learning centres to: <ul style="list-style-type: none"> <li>incorporate sustainability themes and activities into existing programs and services; and to</li> <li>deliver programs which aim to improve household sustainability.</li> </ul>	Sustainability Planning	Ongoing	Achieved
CS4.4 Foster increased collaboration between neighbouring Councils and relevant local service providers and organisations that work on community-based household sustainability programs in order to: <ul style="list-style-type: none"> <li>learn from each other</li> <li>maximise community benefits and reach</li> <li>share resources</li> <li>develop joint programs</li> <li>avoid unnecessary duplication</li> </ul>	Sustainability Planning	Ongoing	Achieved

# Priority area 7

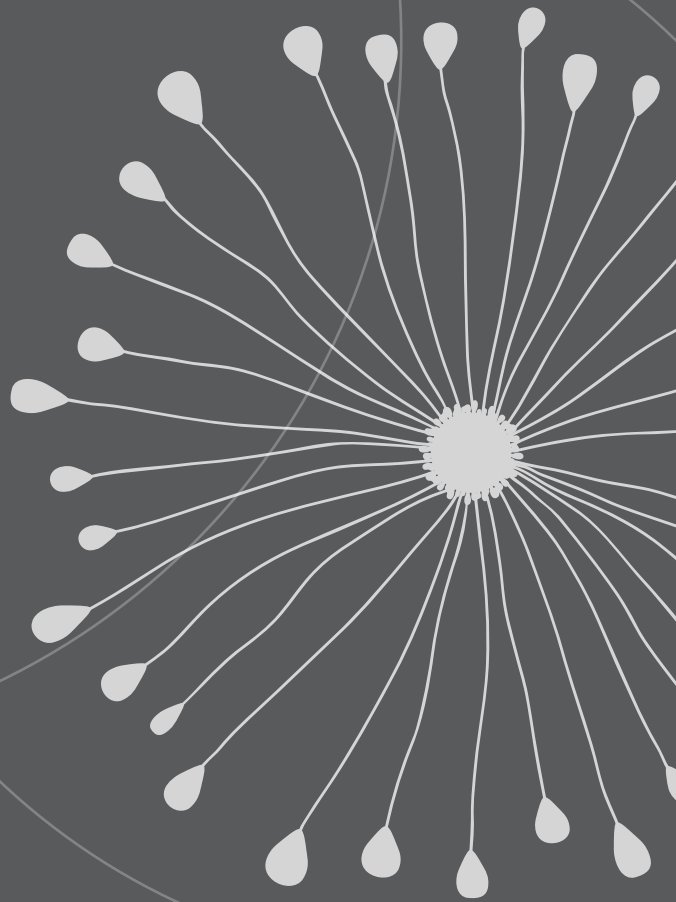
## Change strategies



Action number and description	Department	Priority	Status
CS4.5 Implement programs to assist businesses and organisations improve their sustainability performance.	Sustainability Planning	Short	Achieved
CS4.6 Utilise demonstration projects to motivate others to take action on sustainability.	Sustainability Planning	Ongoing	Achieved
CS4.7 Establish mechanisms to encourage and recognise the achievements of local sustainability leaders, and to foster the development of new sustainability leaders in the Whittlesea community.	Sustainability Planning	Ongoing	Achieved
CS4.8 Continue to support and foster local sustainability community initiatives and leaders through Council's Community Development Grants.	Sustainability Planning	Ongoing	Achieved
CS4.9 Work in partnership with local community groups and organisations to source funding for local sustainability programs.	Sustainability Planning	Ongoing	Achieved
CS4.10 Actively engage and facilitate the involvement of the local community in the development of sustainability policy, programs and strategies through Council's community based advisory committee, the Sustainability Programs Advisory Committee and other key consultation processes.	Sustainability Planning	Ongoing	Achieved
CS4.11 Encourage, support and facilitate the establishment of new community and sustainability groups which encourage sustainable behaviours within the local community.	Sustainability Planning	Ongoing	Achieved
CS5.1 Council will advocate for sustainability. This includes on issues such as climate change mitigation, water efficiency and alternative water supplies, protection of green wedges, sustainable urban development, provision of sustainable transport infrastructure and services in growth areas. (Refer to L6, CC5, B6.4, B8, U4.1, U4.2, U6, WM2.4, WM4 for specific advocacy-based policy directions and strategies).	Sustainability Planning	Ongoing	Achieved
CS5.2 Council will support the Whittlesea community to advocate for sustainability.	Sustainability Planning	Ongoing	Achieved



Photo: Kate Mauger



**Council Offices**

25 Ferres Boulevard  
South Morang VIC 3752

**Email** [info@whittlesea.vic.gov.au](mailto:info@whittlesea.vic.gov.au)

**Website** [whittlesea.vic.gov.au](http://whittlesea.vic.gov.au)

**Postal address**

City of Whittlesea Locked Bag  
Bundoora MDC VIC 3083

**Phone** 9217 2170

National Relay Service 133 677  
(ask for 9217 2170)

Connect with us in your  
preferred language



**Free telephone  
interpreter service**

**131 450**