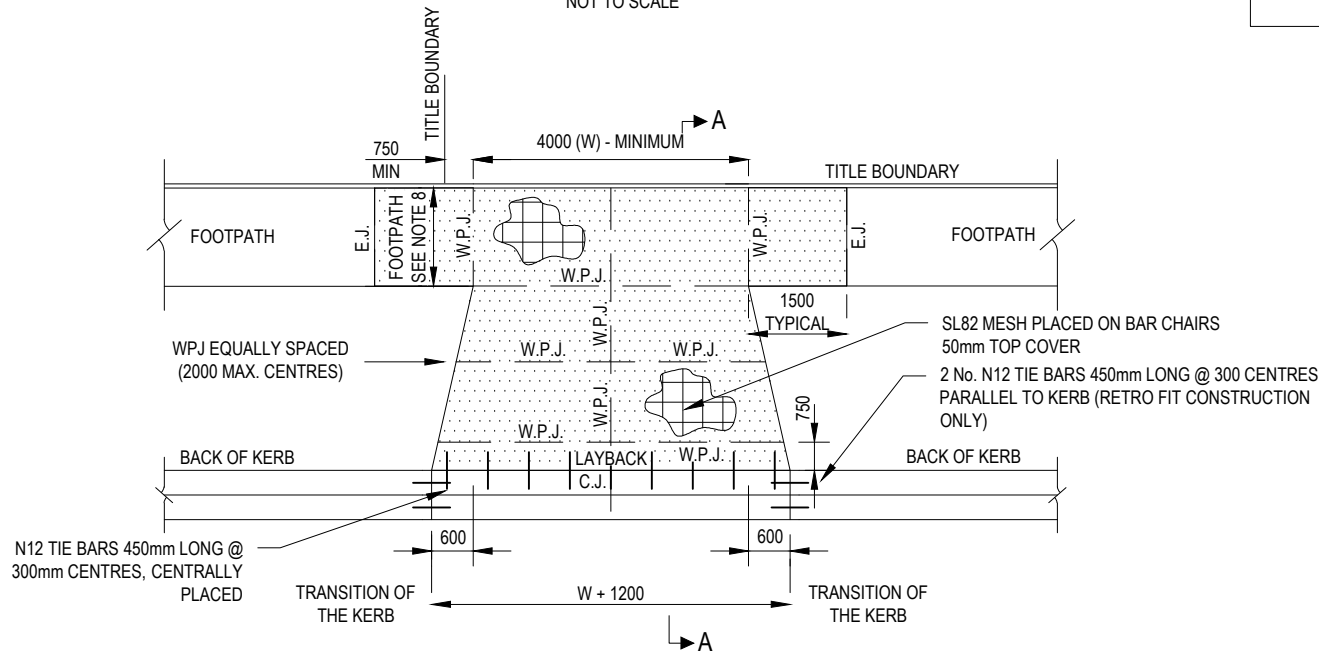


SECTION A - A
NOT TO SCALE



PLAN
NOT TO SCALE

REFER FIGURE EDCM401 FOR JOINTING DETAILS

W.P.J. = WEAKENED PLANE JOINT

E.J. = EXPANSION JOINT

C.J. = CONSTRUCTION JOINT

BETWEEN CROSSOVERS	7 METRES AT KERB
DRAINAGE PITS	0.75 METRES (WITHIN 0.75m - INSTALL CLASS D PIT LID)
TRAFFIC MANAGEMENT DEVICES	1 METRE
UTILITY SERVICE ASSETS	1 METRE
STREET LIGHT	1 METRE
INTERSECTIONS	6 METRES FROM TANGENT POINT AND CLEAR OF SPLITTER ISLANDS
PRAM CROSSING	2 METRES AT KERB
TREES	2.5 METRES
FIRE HYDRANT	1 METRE
LEGAL POINT OF DISCHARGE	1 METRE

NOTES:

1. NO BULLNOSE IN THE INVERT OF KERB.
2. CONCRETE TO BE LIGHT BROOM FINISH WITH EDGES AND JOINTS NEATLY TOOLED AFTER THE BROOM IS APPLIED.
3. ALL FINISHED SURFACES TO COMPLY WITH AS 4586 - SLIP RESISTANT CLASSIFICATION OF NEW PEDESTRIAN SURFACE MATERIALS.
4. THE USE OF PATTERN PAVING OR COLOURED CONCRETE MUST BE APPROVED BY COUNCIL. MINIMUM STRENGTH OF COLOURED CONCRETE 32 MPa.
5. WIDTH OF CROSSING (W) 4000 UNLESS SHOWN OTHERWISE ON APPROVED PLANS.
6. WHERE CONCRETE PAVING CROSSES SERVICE, SEWER AND DRAINAGE TRENCHES, THE TRENCHES TO BE BACKFILLED WITH COMPACTED 20mm CLASS 3 CRUSHED ROCK OR CLASS 3 CRUSHED CONCRETE.
7. WHERE VEHICLE CROSSING IS RETROFITTED THE EXISTING KERB AND CHANNEL IS TO BE REMOVED AND IF THE EXISTING FOOTPATH IS LESS THAN 200mm THICK - ONE BAY OF PATH (TYPICAL 1500 WIDE) ON EITHER SIDE OF THE CROSSING IS TO BE REMOVED, REPLACED WITH 200mm THICK FOOTPATH ON 100mm THICK 20mm CLASS 3 CRUSHED ROCK OR CLASS 3 CRUSHED CONCRETE AND JOINED TO THE EXISTING PATH WITH AN EXPANSION JOINT REFER FIGURE EDCM401.

No	Revision	Note	Drawn	Checked	Approved	Date
0	FINAL ISSUE		DG	MM	-	16.11.15
No * indicates signatures on original issue of drawing or last revision of drawing						



STANDARD DRAWINGS FOR
SUBDIVISIONS IN GROWTH AREAS
HEAVY DUTY
VEHICLE CROSSING

Revision | 0
Date | DEC 2015
EDCM 503