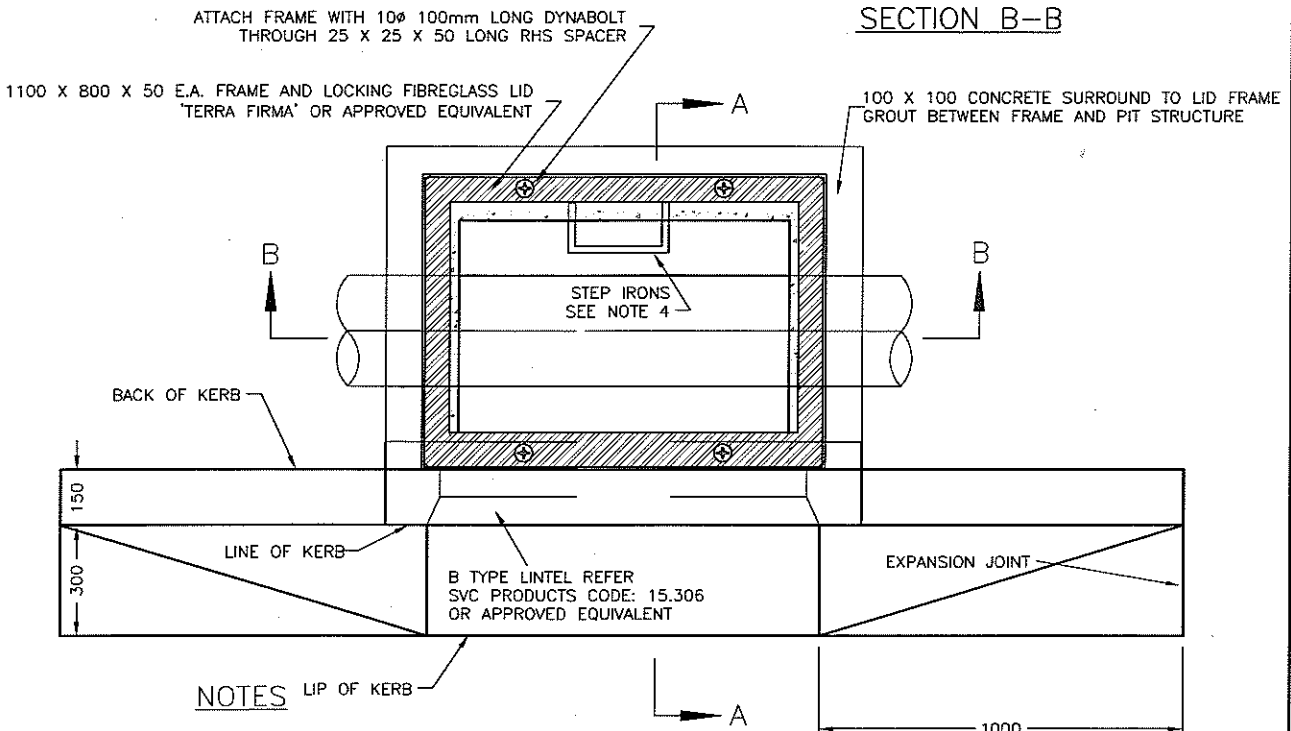



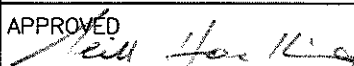
SECTION A-A

SECTION B-B



PLAN (Lid Removed)

- NOTES**
1. Inside dimensions of side entry pits to be 900 x 600 for pipes not exceeding $\varnothing 450$. Larger pipes require pit haunching as per VicRoads SD1001 to SD1023
 2. Reinforcement for the Pit Dia. < 450mm and depth > 1200mm. refer VicRoad Dwg. SD 1011C. For haunched Pits reinforcements are to be as shown in the VicRoad Std. Dwg. 1121B.
 3. Pipe centreline to be 450 minimum or $\frac{1}{2}$ \varnothing pipe + 150 behind B.O.K.
 4. Pit walls and floor:
 - 150 thick for depth to 1800 & $\varnothing 450$
 - 200 thick for depth > 1800 or $\varnothing 450$.
 5. Pits > 900 depth to be supplied with step irons - refer to VicRoads SD1041.
 6. Subject to superintendent's approval precast pits may be substituted.
 7. Surrounding ground within 500mm to be shaped to meet top of pit lid

 City of Whittlesea		
SIDE ENTRY PIT BARRIER TYPE KERB & CHANNEL		SD 200
APPROVED 	DATE 30/06/2008	REV B