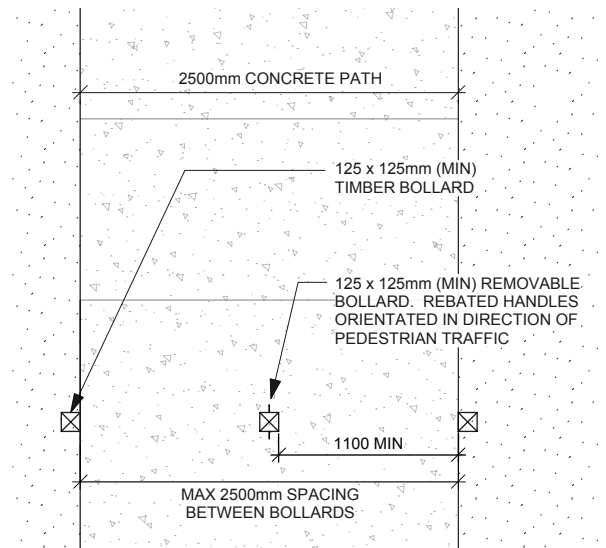
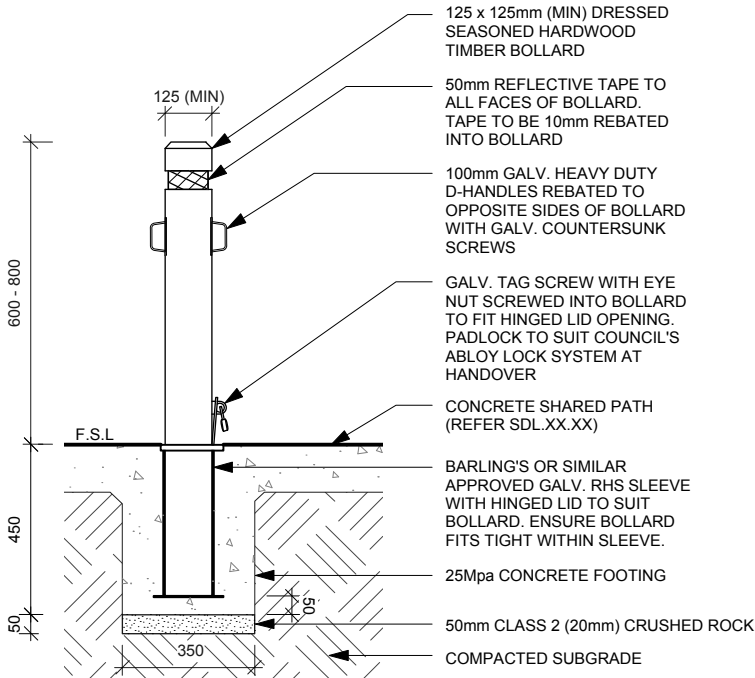
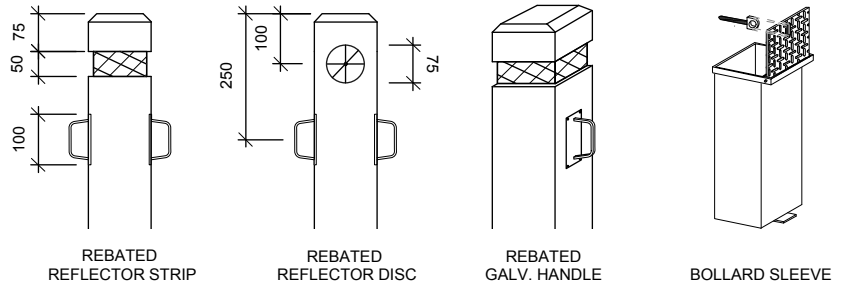


Removable Bollard



SECTION - REMOVABLE BOLLARD (TIMBER)

PLAN - REMOVABLE BOLLARD SPACING (TIMBER)



NOTES:

1. As a minimum, bollards should be 125mm X 125mm in width, 1200mm in height (400mm below ground and 600 - 800mm above ground).
2. As a minimum, removable bollards must be dressed seasoned hardwood with a Natural Durability Class of 2 or better. All timber must be straight, clean and free of defects. Council will consider the use of alternative bollard materials (steel, recycled composite plastic) on an individual basis.
3. Concrete footings shall be nominally 350mm X 350mm in width and 450mm in height. Concrete footings must be 25MPa as a minimum.
4. Removable bollards must be of a contrasting colour to the surrounding finished ground surface and be fitted with a rebated reflective tape or reflective disc. Removable bollards must be painted or stained with reapplication every 18 months or as required.
5. Removable bollards must be installed in the centre of shared paths (2.5m wide) where the path enters open space. Minimum spacing between removable bollards and the edge of path is 1100mm for DDA.
6. Removable bollards must be fitted with Council Abloy padlock (refer SDL.X.01).
7. Two (2) 100mm galvanised D-Handles must be fitted to removable bollard on opposite faces. Handles must be orientated in the direction of pedestrian traffic.

STANDARD DETAIL

PARKS & OPEN SPACE LANDSCAPE CONSTRUCTION DETAILS

Date: 3 November 2014
Revision: A

SDL.3.03